

**Nineteenth century natural history art and belonging in Tasmania**

**Volume Two: Figures**

## List of Figures

Figure 1: Illustrations in the TAL&Dai-ichi (Earl of Derby) Collection.....	1
Figure 2: George Raper. ....	1
Figure 3: Palaeolithic cave drawing from Lascaux, France.....	2
Figure 4: William Buelow Gould, <i>Enchilllis obcordata</i> (Native Daphne), 1832–33, watercolour on paper, 20 x 16 cm. Allport Library and Museum of Fine Arts. ....	2
Figure 5: Top: Tasmanian freshwater crayfish chela, Brita Hansen. Pencil on paper, 2005, bottom: mud dauber wasp, Anita Hansen. Aquarelle and gauche on card, 1993. ....	3
Figure 6: Sydney Parkinson, <i>Two of the natives of New Holland, advancing to combat</i> . From Sydney Parkinson's 'A journal of a voyage to the South Seas'. <a href="http://nishi.slv.vic.gov.au/latrobejournal/issue/latrobe-41/fig-latrobe-41P005a.html">http://nishi.slv.vic.gov.au/latrobejournal/issue/latrobe-41/fig-latrobe-41P005a.html</a> , viewed 25 January 2011. ....	3
Figure 7: Kangaroo. ....	4
Figure 8: Gessner, Conrad. Drawing of rhinoceros, based on drawing by Albrecht Durer in 1515, Conrad Gessner's Animals The New York Times.Science> <a href="http://www.nytimes.com/slideshow/2010/03/23/science/0323-PAINT_2.html">http://www.nytimes.com/slideshow/2010/03/23/science/0323-PAINT_2.html</a> , viewed 20 August 2011. ....	5
Figure 9: Gessner, Conrad. Sixteenth century German woodcut print, from <i>Fischbuch</i> by Gessner, 1598, <a href="http://science photo.com/media/137647/">http://science photo.com/media/137647/</a> , viewed 20 August 2011.....	5
Figure 10: Forster, Georg Johann. <i>Accipiter novae-hollandiae</i> (Grey Goshawk), pencil drawing 1773. Natural History Museum, London. From <i>Feather and Brush</i> , Penny Olsen, p.13. ....	6
Figure 11: Redouté, Pierre-Joseph, <i>Eucalyptus obliqua</i> . From 'Sertum Anglicum' 1779–1792. 38.5 x 27.5 cm. Allport Library and Museum of Fine Arts. ...	6
Figure 12: Redouté, Pierre-Joseph, <i>Correa reflexa</i> from English copy of 'Sertum Anglicum' 1801, The Royal Society of Tasmania Library.....	6
Figure 13: <i>Cigne noir du Cap dé Diemen</i> (Black Swan), Piron delin., Pelee sculpt., Paris 1817, engraving, 31 x 44.8 cm. Pl. no. 9 of <i>Atlas pour servir a la relation du voyage a la recherche de la Pérouse</i> , <a href="http://trove.nla.gov.au/work/30995446">http://trove.nla.gov.au/work/30995446</a> , viewed 17 August 2011.....	7

Figure 14: <i>Perrude a taches noites du Cap dé Diemen</i> . Audibert delin, Peree sculpt. Paris 1817, engraving 31 x 44.8 cm, from <i>Atlas pour server a la relation du voyage a la recherche de la Pérouse</i> . <a href="http://trove.nla.gov.au/work/30995446">http://trove.nla.gov.au/work/30995446</a> , viewed 17 August 2011.....	7
Figure 15: Redouté, Pierre-Joseph <i>Mazeutoxeron reflexum</i> (now <i>Correa reflexa</i> ).....	8
Figure 16: Redouté, Pierre-Joseph, .....	8
Figure 17: Artwork by Michel Garnier and Jacques Milbert.....	9
Figure 18: Lesueur's illustrations from Baudin's journal. ....	10
Figure 19: Charles-Alexandre Lesueur, <i>Espèce indéterminée</i> — Mollusque,.....	10
Figure 20: Charles-Alexandre Lesueur, <i>Méduse chysaora hysoscella</i> , Aquarelle et crayon sur vélem, 43.2 x 27.9 cm, from <i>Charles-Alexandre Lesueur: Peintre voyageur, un tresor oublie</i> , Gabrielle Baglione and Cédric Crémère, p.368.....	11
Figure 21: Charles-Alexandre Lesueur, <i>Firole</i> , Aquarelle sur vélem 28 x 43 cm, from <i>Charles-Alexandre Lesueur: Peintre voyageur, un tresor oublie</i> , Gabrielle Baglione and Cédric Crémère, p.372.....	11
Figure 22: sketches made at Mauritius. ....	12
Figure 23: Detail of emu feather.....	12
Figure 24: <i>Thylacinus cynocephalus</i> , George Harris, <i>Transactions of the Linnean Society</i> , London, 1808, <a href="http://www.australiangeographic.com.au/journal/view-image.htm?index=78id=8432">http://www.australiangeographic.com.au/journal/view-image.htm?index=78id=8432</a> , viewed 12 October 2011. ....	13
Figure 25: Sketches of different kangaroos drawn from life: study drawings of different attitudes that are found also in certain vellum paintings. Pencil drawing, 12.5 x 19.5 cm. From J. Bonnemains ‘ <i>The Artists of the Baudin Expedition</i> ’, p.318.....	13
Figure 26: Sea Lion and Lioness. From ‘ <i>A Voyage Round the World in the Years 1740–1744</i> ’, Knapton, 1748.....	14
Figure 27: The sea lion of Pernetty: From ‘ <i>The Natural History of the amphibious carnivores including the walrus and seals, also of the herbivorous cetacea, etc.</i> ’ 1839. Hand coloured etching. <a href="http://digitalgallery.nypl.org/nypldigital">http://digitalgallery.nypl.org/nypldigital</a> , viewed 21 February 2011. ....	14
Figure 28: Charles Alexandre Lesueur, <i>Mirounga leonina</i> . ....	15
Figure 29: New Holland Honeyeater ( <i>Phylidonyris novaehollandiae</i> ), Charles-Alexandre Lesueur, watercolour, pencil and ink, 14.5 x 25 cm, from J. Bonnemains ‘ <i>The Artists of the Baudin Expedition</i> ’, p.301.....	16
Figure 30: <i>Agrostemma (silene) coronaria</i> , Ferdinand Bauer, from <i>Flora Graeca</i> by John Sibthorp, 1806, <a href="http://www.gimcw.org/plants/silene.coronaria.cfm">http://www.gimcw.org/plants/silene.coronaria.cfm</a> , viewed 24 August 2011.....	16

Figure 31: Ellis aquatic microscope c. 1775. <a href="http://www.antique_microscopes.com/photos/ellis.htm">http://www.antique_microscopes.com/photos/ellis.htm</a> , viewed 24 August 2011. ....	17
Figure 32: Ferdinand Bauer's colour chart, <a href="http://botanicalillustration.blogspot.com/2010/07/ferdinand-bauers-andthaddaus-haenkes.html">http://botanicalillustration.blogspot.com/2010/07/ferdinand-bauers-andthaddaus-haenkes.html</a> , Madrid Royal Botanic Gardens, viewed 25 August 2011 .....	17
Figure 33: Details of Parkinson and Bauer's sketches. ....	18
Figure 34: Koala. ....	19
Figure 35: <i>Corybus unguiculatus</i> A and B. ....	19
Figure 36: <i>Grevillea banksii</i> , from ' <i>Illustrationes florae Novae Hollandiae</i> ' 1813, handcoloured line and stipple engraving, 51 x 34 cm. Allport Library and Museum of Fine Arts. ....	20
Figure 37: (top) Charles-Alexandre Lesueur, handcoloured lithograph, from .....	20
Figure 38: William Buelow Gould by Thomas Bock, c1840, watercolour on cardboard, 8.6 x 5.7 cm, Tasmanian Museum and Art Gallery. ....	21
Figure 39: Spode china c. 1820. Vase: <a href="http://www.tarring-antiques.com/302.htm">http://www.tarring-antiques.com/302.htm</a> , viewed 29 August 2011.....	21
Figure 40: Spode patter book. Pattern 306 Dessert plate. Handpainted and gilded. The centre is directly copied from the illustration of <i>Lathyrus odoratus</i> in the <i>Botanical Magazine</i> 2: t. 60 (1788). (Courtesy of the Spode Museum Trust). from Pam Woolliscroft " <i>Flora Ceramica</i> ." <i>Curtis Botanical Magazine</i> (2002), p.204.....	21
Figure 41: Illustrations claimed by James Scott. ....	22
Figure 42: Comparison of illustrations for James Scott and William de Little. ....	23
Figure 43: <i>Blue flower</i> . ....	23
Figure 44: <i>Correa reflexa</i> by William Buelow Gould and Jean-Pierre Redouté.....	24
Figure 45: Detail from <i>Correa reflexa</i> by Gould, watercolour on paper, undated, 22 x 18 cm, Allport Library and Museum of Fine Arts. ....	25
Figure 46: <i>Pomaderris apetata</i> , undated, watercolour on paper, 22.8 x 18.7 cm, Queen Victoria Museum and Art Gallery.....	25
Figure 47: Pink Tall Plant, undated, watercolour on paper, 22 x 18 cm, Allport Library and Museum of Fine Arts. ....	25
Figure 48: <i>Kennedia prostrata</i> , watercolour on paper, 22 x 18 cm, 1827-183?, Allport Library and Museum of Fine Arts. ....	26
Figure 49: <i>Melaleuca squammata</i> (Scented Paper Bark), Gould, William Buelow (1803–1853), 1831, watercolour on paper, 22 x 18 cm, Allport Library and Museum of Fine Arts. ....	26
Figure 50: Freshwater crayfish. ....	27



Figure 51: <i>Astacopsis gouldi</i> (left), <i>Astacopsis tricornis</i> (left).....	27
Figure 52: <i>Flounder</i> , Gould, William Buelow (1803–1853), in Gould's <i>sketchbook of fishes</i> , item 3, ca. 1832, watercolour on paper, 19 x 23 cm, Allport Library and Museum of Fine Arts. ....	28
Figure 53: <i>Sarah Isalnd</i> , Macquarie Harbour, 1853; watercolour, 29.5 x 55.5 cm, Mitchell Library, New South Wales State Library. <a href="http://www.sl.nsw.gov.au/events/exhibitions/2006/ontherun/images/s6.html">http://www.sl.nsw.gov.au/events/exhibitions/2006/ontherun/images/s6.html</a> , viewed 7 April 2010.....	29
Figure 54: <i>Hooker and company journeying through the wilderness from Plymouth to Hartford, 1636</i> . (1846), Frederick Edwin Church, 800 x 535 cm, oil on canvas, <a href="http://www.museumsyndicate.com/images/2/11051jpg">http://www.museumsyndicate.com/images/2/11051jpg</a> , viewed 14 February 2010. ....	29
Figure 55: Still life by Gould: Still life bunch of flowers ca 1838, oil on tin, 17 x 23 cm. Allport Library and Museum of Fine Arts. ....	30
Figure 56: Spode plate: 1820 <a href="http://vanbrughwestantiques.com/view_category.php?category_id=12">http://vanbrughwestantiques.com/view_category.php?category_id=12</a> , viewed 29 August 2011.....	30
Figure 57: <i>Birds</i> , oil on canvas, undated, 70 x 60 cm, private collection, Hobart.....	31
Figure 58: <i>Game—Still Life with Birds</i> , 1836, watercolour on white paper, 23.5 x 33.5 cm, Queen Victoria Museum and Art Gallery.....	31
Figure 59: <i>Fish on a Blue and White Plate</i> , 1845, oil on canvas 20.3 x 30.5 cm, private collection, Hobart. ....	32
Figure 60: <i>Still life with Game and Fish</i> , William Buelow Gould, oil on canvas, 75 x 61.5 cm, <a href="http://www.mossgreen.com.au/auctions/artwork_detail.asp?idimage=22462">http://www.mossgreen.com.au/auctions/artwork_detail.asp?idimage=22462</a> , viewed 5 September 2011.....	32
Figure 61: <i>Imaginary River Scene</i> ., 1838, oil on paper mounted on wood panel, 30 x 36 cm, William Crowther Library, State Library of Tasmania. ....	33
Figure 62: Cole, Thomas (1801-1848) <i>View from Mount Holyoke, Northampton, Massachusetts, after a Thunderstorm—The Oxbow</i> . 1836. Oil on canvas, 130.8 x 193 cm, The Metropolitan Museum of Art, New York, NY, U.S.A. ....	33
Figure 63: <i>Mary Morton Allport and her children</i> : by Mary Morton Allport, ca 1837, watercolour on ivory, 10 x 7 cm. Allport Library and Museum of Fine Arts. ....	34
Figure 64: Mary Morton Allport, <i>Christ Church. West Bromwich</i> , watercolour on paper, 12 x 16 cm, Allport Library and Museum of Fine Arts.....	34
Figure 65: <i>Brunonia australis</i> : M.M. Allport, 1845?, watercolour on paper mounted on album page, 25 x 33 cm. Allport Library and Museum of Fine Arts. ....	35
Figure 66: <i>Telopea truncata from the mountain pass above Barrett's Mill</i> : M. M. Allport, 1845?, watercolour on paper mounted on card, 24 x 17 cm, Allport Library and Museum of Fine Arts.....	35
Figure 67: Mary Morton Allport, insect drawings.....	36

Figure 68: <i>Beach below Sandy Bay</i> . .....	37
Figure 69: Mary Morton Allport, landscapes. ....	37
Figure 70: Louisa Anne Meredith on doorstep, between 1858 and 1863, photographic print, albumen, sepia toned, 9 x 7 cm (photograph believed to be by Bishop Francis Nixon). Allport Library and Museum of Fine Arts Tasmania. ....	38
Figure 71: <i>Anemone</i> , 1836, handcoloured print, 13.3 x 21.6 cm, <a href="http://64.64.17.13/~sbadmin/product-info.php?Louisa_Anne_Twamley-pid2730.html">http://64.64.17.13/~sbadmin/product-info.php?Louisa_Anne_Twamley-pid2730.html</a> , viewed 12 June 2011. ....	38
Figure 72: Louisa Anne Meredith, <i>Bush Friends</i> , Corn-eared Water Sedge with moths, 1891, coloured print, 33 x 23 cm, Tasmaniana Library.....	38
Figure 73: Tasmanian Tiger and Platypus: Louisa Anne Meredith, from ' <i>Tasmanian friends and foes: feathered, furred and finned</i> ', black and white, 7 x 10 cm. Allport Library and Museum of Fine Arts. ....	39
Figure 74: Platypus and Tasmanian Tiger by HC Richter for J Gould.....	39
Figure 75: Flowers; L.A. Meredith, from ' <i>Bush Friends in Tasmania: native flowers, fruits and insects</i> ', coloured print, 33 x 33 cm. Allport Library and Museum of Fine Arts. ....	40
Figure 76: Fish studies by Louisa Anne Meredith.....	40
Figure 77: <i>Spring Vale cottage</i> , Louisa anne Meredith, from <i>My Home in Tasmania</i> , Vol. 1 p.218, 1852, black and white, 7 x 8 cm, Allport Library and Museum of Fine Arts. ....	41
Figure 78: <i>Ephema splendida</i> , John Gould, 1846, pencil and crayon, 53 x 37.5 cm, <a href="http://nla.gov.au/nla.pic_an9994496">http://nla.gov.au/nla.pic_an9994496</a> , viewed, 5 September 2011. ....	41
Figure 79: Elizabeth Gould, from <i>The Story of Elizabeth Gould</i> .....	41
Figure 80: Black-headed Honey-eater (left): Elizabeth Gould, undated, watercolour over pencil, 38 x 38 cm. W.L. Crowther Library, State Library of Tasmania, Crescent Honey-eater, Gould, <a href="http://j_gould.tamagawa.jp/Japanese/ions/anst/anst4.html">http://j_gould.tamagawa.jp/Japanese/ions/anst/anst4.html</a> , viewed 12 September 2011. ....	42
Figure 81: Crescent Honey-eater, <a href="http://tassiebirds.blogspot.com/2008/03/0n_movecrescent_honeyeater.html">http://tassiebirds.blogspot.com/2008/03/0n_movecrescent_honeyeater.html</a> , viewed 12 September 2011.....	42
Figure 82: Black-headed Honey-eater. ....	43
Figure 83: Tasmanian thornbill. ....	43
Figure 84: Southern Hairy-nosed Wombat: J. Wolf for J. Gould, pencil and watercolour, 36 x 54 cm, 1869. Allport Library and Museum of Fine Arts. ....	44
Figure 85: Portrait of John Glover; M.M.Allport, ca 1832, watercolour on ivory, 11.8 x 9.3 cm, Allport Library and Museum of Fine Arts, State Library of Tasmania.....	44

Figure 86: <i>Patterdale Van Diemen's Land</i> , John Glover (1767–1849), 1840, oil on ?, 74 x 114 cm, W. J. Crowther Library, State Library of Tasmania. ....	45
Figure 87: <i>My Harvest Home</i> .1835, oil on canvas, 76 x 114 cm, Tasmanian Museum and Art Gallery. ....	45
Figure 88: Adelie penguins: <a href="http://216.194.68.240/~admin1/Antarctica">http://216.194.68.240/~admin1/Antarctica</a> , viewed 9 May 2011.....	46
Figure 89: Durville Crab by Borromee, 1837–1840, 52.7 x 34.3 cm, <a href="http://www.georgeglazer.com/prints/nathis/marine/durvillecrab.html">http://www.georgeglazer.com/prints/nathis/marine/durvillecrab.html</a> , viewed 23 October 2011 .....	46
Figure 90: <i>Kangurroode la Nouvelle Hollande</i> : Outard, 1840s, lithograph, 13.3 x 24 cm. <a href="http://www.joseflebovigallery.com/Catalogue/Archive">http://www.joseflebovigallery.com/Catalogue/Archive</a> , viewed 9 May 2011.....	47
Figure 91: <i>Dianella tasmanica</i> H.f., from <i>Flora Tasmaniae</i> , handcoloured lithograph, WH Fitch litho.....	47
Figure 92: William Archer, in <i>Members of the Parliaments of Tasmania</i> No. 84, photograph: sepia toning ; 14 x 10 cm, by J. W. Beattie, Allport Library and Museum of Fine Arts. ....	48
Figure 93: <i>Corunastylis archeri</i> (Hook.f.) D.L.Jones & M.A.Clem. (previously <i>Prasophyllum archeri</i> H.f), undated, 23.0 x 18.5 cm, watercolour and pencil, Tasmanian Museum and Art Gallery. ....	48
Figure 94: <i>Caladenia filamentosa</i> R.Br., (left) Linnean Society, watercolour and pencil, (right) from <i>Flora Tasmaniae</i> , handcoloured lithograph by WH Fitch. ....	49
Figure 95: <i>Spiranthes australis</i> (R.Br.) Lindl., showing morphological details.Tasmanian Museum and Art Gallery. ....	49
Figure 96: Botanical microscope, Dolland, London, c. 1830, <a href="http://www.antique_microscopes.com">http://www.antique_microscopes.com</a> , viewed 29 September 2011. ....	49
Figure 97:.. (left) <i>Dipodium roseum</i> D.L.Jones & M.A.Clem., undated, 23.0 x 18.5 cm, watercolour and pencil, Tasmanian Museum and Art Gallery, (right) <i>Dipodium roseum</i> , from <i>Flora Tasmaniae</i> , handcoloured lithograph by WH Fitch. ....	50
Figure 98: <i>Thelymitra antennifera</i> (Lindley) Hook.f., (left) Linnean Society,undated, watercolour and pencil, (right) from <i>Flora Tasmaniae</i> , handcoloured lithograph by WH Fitch. ....	50
Figure 99: <i>William Charles Piguenit</i> : by Kerry and Co., c1900, 14.0 x 10.4 cm, photograph, sepia toned, mounted on cardboard. W. L. Crowther Library, State Library of Tasmania. ....	51
Figure 100: <i>Permian Fossils</i> : W. Pigenuit, lithograph, 1868, from ' <i>WC Pigenuit Retrospective</i> ', p.13, Tasmanian Museum and Art Gallery. ....	51
Figure 101: <i>Mount Olympus, Lake Saint Clair</i> , c. 1891, monochrome oil on cardboard, 118.1 x 218.4 cm, Tasmanian Museum and Art Gallery.....	52

Figure 102: <i>The Frenchman's Cap from the western flank of Mount Arrowsmith</i> , 1887, monochrome oil on cardboard, 33.1 x 44.5 cm, Tasmanian Museum and Art Gallery. ....	52
Figure 103: Albert Bierstadt (1830-1902), <i>The Oregon Trail</i> , Oil on canvas, 1869, 78.7 x 125.7 cm, The Butler Institute of American Art, Youngstown, <a href="http://173.9.6.225/Butler/src/Detail.php?Window=Enlargement&amp;CRID=Coll424">http://173.9.6.225/Butler/src/Detail.php?Window=Enlargement&amp;CRID=Coll424</a> , viewed 19 April 2011 .....	52
Figure 104: Unicorn from <i>Codex canadiensis</i> . ....	53
Figure 105: <i>Codex canadiensis</i> and Conrad Gessner. ....	53
Figure 106: Great Speckled Loon from New Foundland, Eleazer Albin (fl. 1690-c. 1742/79?), etching, from <i>A Natural History of Birds</i> , 1735, in the Peter Winkworth Collection, Library and Archives Canada, <a href="http://www.collectionscanada.gc.co">http://www.collectionscanada.gc.co</a> , viewed 16 september 2011.....	54
Figure 107: Canadian birds, JJ Audubon. (top left) Canada Goose, (top right), Great Blue Heron, Collection of John James Audubon Museum, Henderson, Kentucky, <a href="http://www.boiseartmuseum.org/exhibit/past.php">http://www.boiseartmuseum.org/exhibit/past.php</a> , viewed 17 September 2011, (bottom), Spotted or Canada Grouse, 1833, handcoloured engraving with aquatint and etching by R. Havell, from <i>Birds of America</i> , 95.9 x 64.1 cm, <a href="http://www.bibliopolis.com/">http://www.bibliopolis.com/</a> , viewed 17 September 2011.....	54
Figure 108: Shearwater, JJ Audubon, 1826, pencil sketch, Beinecke Rare Book and Manuscript Library, Yale University, <a href="http://beinecke.library.yale.edu/dl_crosscollex/photoneg/oneITEM.asp?pid=39002036101906&amp;ill">http://beinecke.library.yale.edu/dl_crosscollex/photoneg/oneITEM.asp?pid=39002036101906&amp;ill</a> , viewed 20 September 2011.....	55
Figure 109: Indian Cup, Maria Morris (1810-1875), hand-coloured lithograph on paper, 32.5 x 25.5 cm, <a href="http://www.collectionscanada.gc.ca/webarchives/20060119112151">http://www.collectionscanada.gc.ca/webarchives/20060119112151</a> , viewed 17 September 2011.....	56
Figure 110: Maria Morris, <a href="http://www.collectionscanada.gc.ca/webarchives/20060119112151">http://www.collectionscanada.gc.ca/webarchives/20060119112151</a> , viewed 17 September 2011. ....	56
Figure 111: Agnes Chamberlin, fronticepiece, <i>Canadian Wildflowers</i> , 1868, hand-coloured lithograph, <a href="http://chamberlin.library.utoronto.ca/digobjectbook.cfm?idno=chamberlin_a_0003+Page=0005">http://chamberlin.library.utoronto.ca/digobjectbook.cfm?idno=chamberlin_a_0003+Page=0005</a> , viewed 20 September 2011. ....	57
Figure 112: Agnes Chamberlin, (left) <i>Aster lindleyanus</i> , watercolour, 11.4 x 19.1 cm, Box 4, (right) <i>Ananita, Boletus, Stropharia semiglobata</i> , watercolour, Box 7, <a href="http://chamberlin.library.utoronto.ca/digobjectbook.cfm?idno=">http://chamberlin.library.utoronto.ca/digobjectbook.cfm?idno=</a> , viewed 20 September 2011.....	57
Figure 113: <i>View of the Fall of Montgomery and the Attack made by General Wolfe on the French Intrenchments near Beaufort</i> . ....	58
Figure 114: Albrecht Altdorfer, <i>Landscape with a Double Spruce in the Foreground</i> , c. 1520–22, etching, printed from iron, 11 x 16 cm, The Metropolitan Museum of Art, <a href="http://www.metmuseum.org/toah/works_of_art/1993.1097">http://www.metmuseum.org/toah/works_of_art/1993.1097</a> , viewed 14 September 2011.....	58

Figure 115: landscape: (left) <i>Landscape with wood carver</i> , c. 1522, pen, watercolour and gouache on paper, 20.1 x 13.6 cm, by Albrecht Altdorfer. (right) <i>The Jack Pine</i> : Tom Thompson, 1916-17, 127.9 x 139.8 cm, oil on canvas, National Gallery of Canada. <a href="http://www.gallery.ca/en/see/collections/artwork.php?inkey=11056">http://www.gallery.ca/en/see/collections/artwork.php?inkey=11056</a> , viewed 25 June 2011. ....	59
Figure 116: Rivière Bleue Park on the Mainland: author's private photograph collection. ....	60
Figure 117: New Caledonian Night Heron ( <i>Nycticorax caledonicus</i> ), Georg Forster, from J. Robson ' <i>Captain Cook Encyclopedia</i> ', p.159.....	60
Figure 118: <i>Passiflora aurantia</i> , Georg Forster, watercolour, Zoology Library, The Natural History Museum, from <i>Voyages of Discovery</i> , T. Rice, p. 192. .....	60
Figure 119: Audebert, pinxt, Peree, sculpt, <i>Pie de la Nouvelle Caledonie</i> , etching, 30.5 x 44.7 cm, <a href="http://catalogue.nla.gov.au/Record/1564181">http://catalogue.nla.gov.au/Record/1564181</a> , viewed 17 August 2011.....	61
Figure 120: Redouté, Jean-Pierre, <i>Antholoma montana</i> , another New Caledonia native, <a href="http://bibliodyssey.blogspot.com/20110106archive.html">http://bibliodyssey.blogspot.com/20110106archive.html</a> , viewed 15 July 2011.....	61
Figure 121: <i>Hachettea austro-caledonica</i> , from <i>Dictionnaire de botanique</i> , Henri Baillon (1827–1895), chromolithograph by Portail, after August Faguet, 23 x 31 cm, <a href="http://www.meemelink.com/prints/pages/prints/balanophoracea.htm">http://www.meemelink.com/prints/pages/prints/balanophoracea.htm</a> , viewed 20 September 2011. ....	61
Figure 122: Pied Cormorant, J Gould, from <i>Birds of Australia</i> , handcoloured lithograph, <a href="http://www.nzbirds/littleshag.html">http://www.nzbirds/littleshag.html</a> , viewed 20 September 2011. ....	62
Figure 123: Moorak, from <i>Animal Kingdom Illustrated</i> , Vol 2, 1859, etching, <a href="http://etc.usf.edu/clipart/13000/13053/moorak_13053.htm">http://etc.usf.edu/clipart/13000/13053/moorak_13053.htm</a> , viewed 20 September 2011. ....	62
Figure 124: Cagou .....	63
Figure 125: Tjibaou Cultural Centre, author's private collection.....	64

## *Natural history art in the collections today – living at the centre*



Left, duck, watercolour on paper, unsigned, Vol. 04 Zoology of New Holland, [1770–1190]: right, unidentified fish, watercolour on paper, watermarked ?, unsigned, Vol. 04 Zoology of New Holland, [1770–1190].

Figure 1: Illustrations in the TAL&Dai-ichi (Earl of Derby) Collection



George Raper (1769–1796), Waratah, watercolour on paper, 40.0 x 30.5 cm, National Library of Australia, <http://nationaltreasures.nla.gov.au/>, viewed 26 October 2011.

Figure 2: George Raper.



George Raper (1769–1796), Laughing Kookaburra, watercolour on paper, 40.5 x 32.0 cm, National Library of Australia, <http://nationaltreasures.nla.gov.au/>, viewed 26 October 2011.

## Introduction



Figure 3: Palaeolithic cave drawing from Lascaux, France.  
<http://blogs.smithsonianmag.com/science/cavemen-were-much-better-at-illustrating-animals-than-artists-today>, viewed 20 December 2012.



Figure 4: William Buelow Gould, *Enchillia obcordata* (Native Daphne), 1832–33, watercolour on paper, 20 x 16 cm. Allport Library and Museum of Fine Arts.



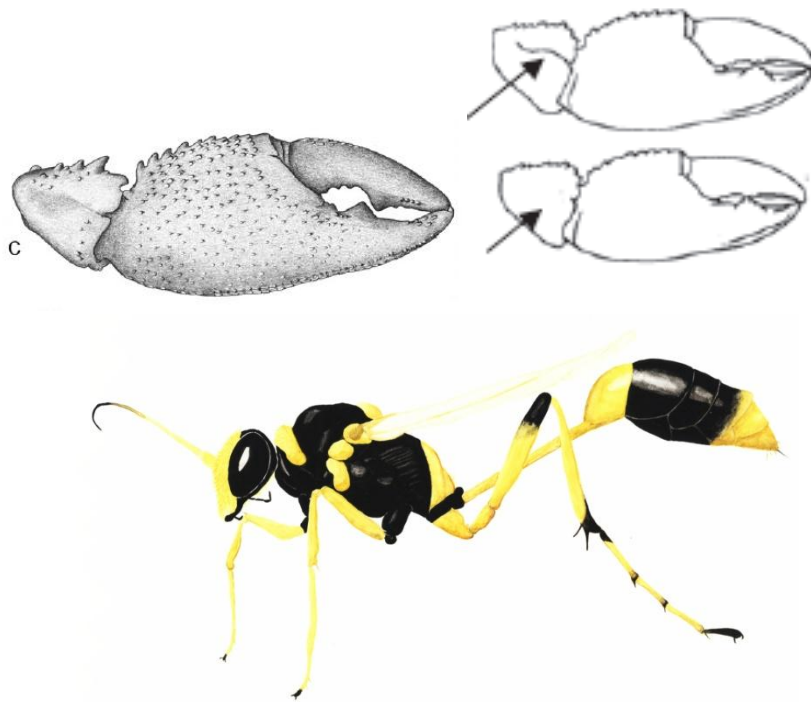


Figure 5: Top: Tasmanian freshwater crayfish chela, Brita Hansen. Pencil on paper, 2005, bottom: mud dauber wasp, Anita Hansen. Aquarelle and gauche on card, 1993.

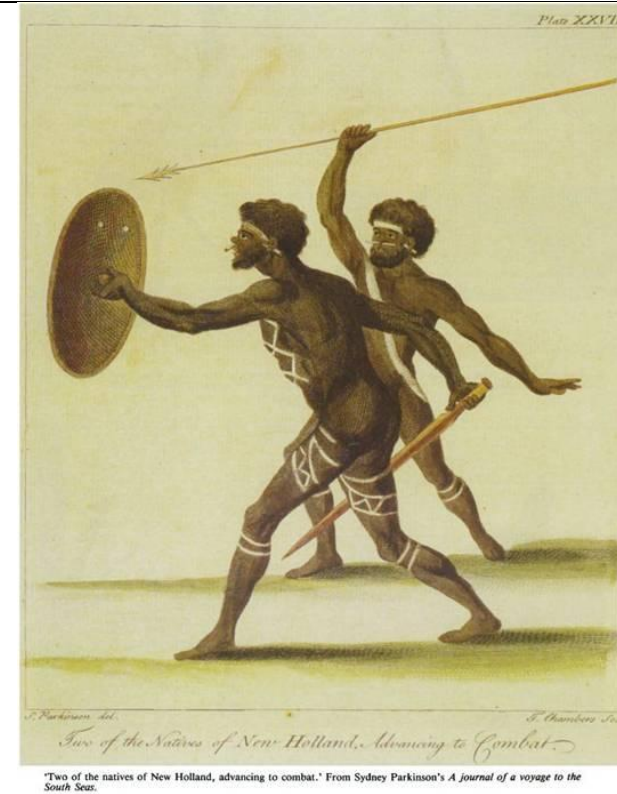


Figure 6: Sydney Parkinson, Two of the natives of New Holland, advancing to combat. From Sydney Parkinson's 'A journal of a voyage to the South Seas'.  
<http://nishi.slv.vic.gov.au/latrobejournal/issue/latrobe-41/fig-latrobe-41P005a.html>, viewed 25 January 2011.



## The Explorers — going to the periphery — 1642 to 1803



*Kangaroo by Stubbs – An Animal of a New Species 1773, after George Stubbs, National Museum of Australia. From James Cook's official account of the Endeavour voyage.*



*Kangaroo, after George Stubbs, engraving, 15.5 x 21 cm, from James Cook's journal of his first voyage, <http://www.josefleBovigallery.com>, viewed 16 August 2011.*



*<http://www.neatorama.com> 16 August 2011.*



*[http://joan\\_druett.blogspot.com](http://joan_druett.blogspot.com) 16 August 2011.*

*Figure 7: Kangaroo.*



Figure 8: Gessner, Conrad. Drawing of rhinoceros, based on drawing by Albrecht Durer in 1515, Conrad Gessner's *Animals* The New York Times.Science> [http://www.nytimes.com/slideshow/2010/03/23/science/0323-PAINT\\_2.html](http://www.nytimes.com/slideshow/2010/03/23/science/0323-PAINT_2.html), viewed 20 August 2011.

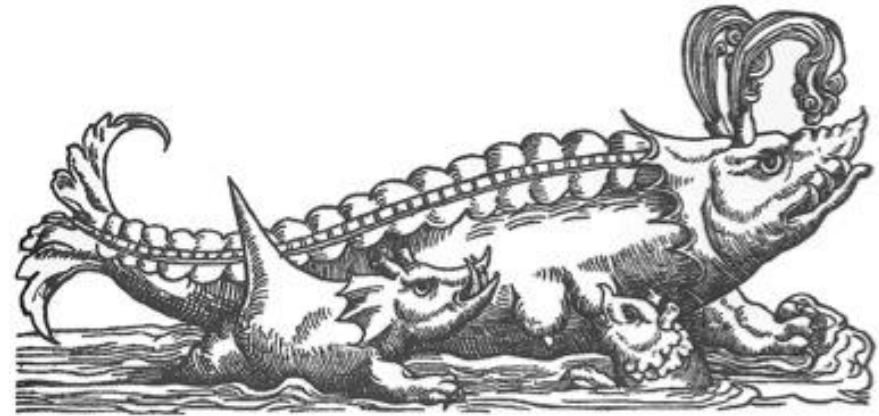


Figure 9: Gessner, Conrad. Sixteenth century German woodcut print, from *Fischbuch* by Gessner, 1598, <http://science photo.com/media/137647/>, viewed 20 August 2011.

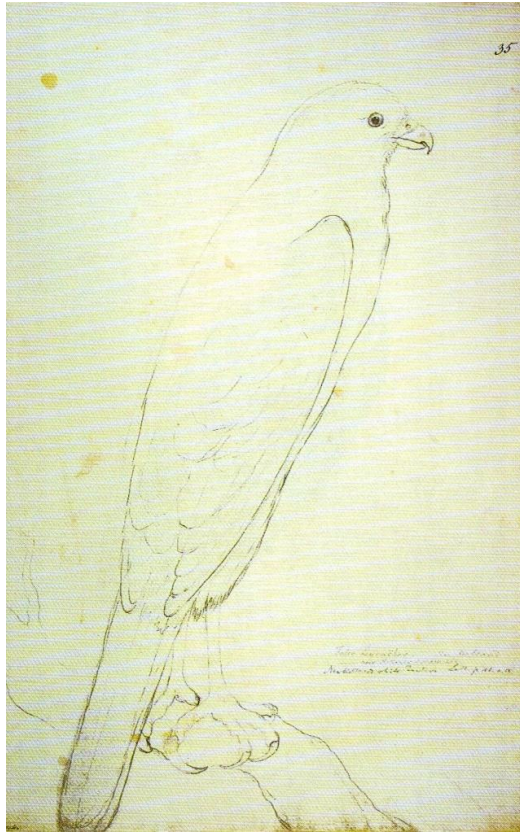


Figure 10: Forster, Georg Johann. *Accipiter novae-hollandiae* (Grey Goshawk), pencil drawing 1773. Natural History Museum, London. From *Feather and Brush*, Penny Olsen, p.13.



Figure 11: Redouté, Pierre-Joseph, *Eucalyptus obliqua*. From 'Sertum Anglicum' 1779–1792. 38.5 x 27.5 cm. Allport Library and Museum of Fine Arts.



Figure 12: Redouté, Pierre-Joseph, *Correa reflexa* from English copy of 'Sertum Anglicum' 1801, The Royal Society of Tasmania Library.



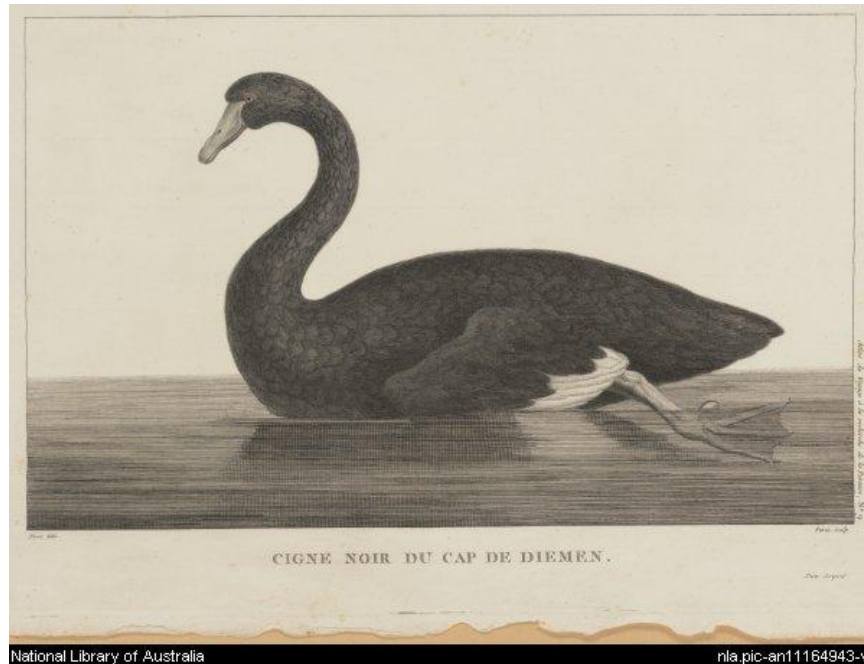
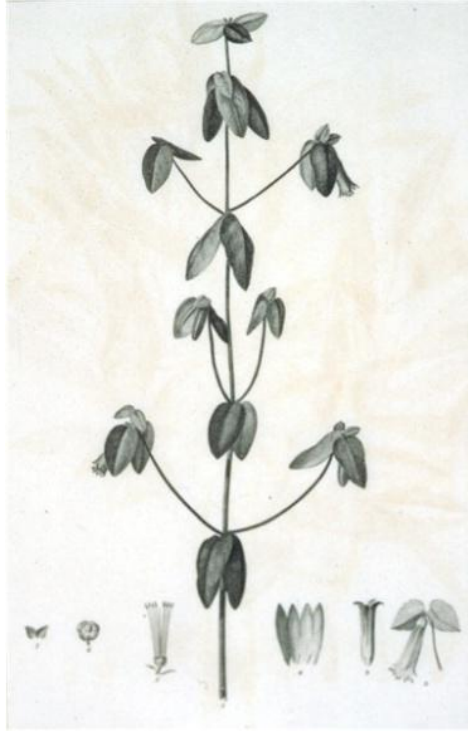


Figure 13: Cigne noir du Cap dé Diemen (*Black Swan*), Piron delin., Pelee sculpt., Paris 1817, engraving, 31 x 44.8 cm. Pl. no. 9 of *Atlas pour servir a la relation du voyage a la recherche de la Pérouse*, <http://trove.nla.gov.au/work/30995446>, viewed 17 August 2011.



Figure 14: Perruche a taches noites du Cap dé Diemen. Audibert delin, Peree sculpt. Paris 1817, engraving 31 x 44.8 cm, from *Atlas pour servir a la relation du voyage a la recherche de la Pérouse*. <http://trove.nla.gov.au/work/30995446>, viewed 17 August 2011.



*Redouté, Pierre-Joseph* Mazeutoxeron reflexum (now Correa reflexa). From 'Voyage in search of La Pérouse, Vol2. Plates Pl.n.XIX', engraving, 23 x 14 cm. State Library of Tasmania.



Figure 15: *Redouté, Pierre-Joseph* Mazeutoxeron reflexum (now Correa reflexa).



*Redouté, Pierre-Joseph*, Eucalyptus obliqua L'Hér. From 'Sertum Anglicum' 1779–1792. 38.5 x 27.5 cm. State Library of Tasmania.



Figure 16: *Redouté, Pierre-Joseph*, .



*The Poorly Defended Rose*, Michel Garnier, 46.2 x 37.62 cm, oil on canvas, 1789, Minneapolis Institute of Arts, <http://www.artsmia.org/viewer/detail.php?v=12&id=1566>, viewed 18 August 2011.



*Havvrshaw or Warren Landing*, lithograph, Jacques Milbert, 1828, New York Public Library, <http://digitalgallery.nypl.org/nypldigital/id?1231044>, viewed 18 August 2011.

Figure 17: Artwork by Michel Garnier and Jacques Milbert.





Charles-Alexandre Lesueur, Poisson de la famille des Macrouridae, no 49 34 Degrés de Latitude Sud – 13 Degrés 30 Minutes Oriental-Exocetus, Aquarelle et encre sur papier 10 x 17cm Aquarelle, encre et crayon, from Charles-Alexandre Lesueur: *Peintre voyageur, un trésor oublié*, Gabrielle Baglione and Cédric Crémère, p184.



Sur papier blenti 6.5 x 14.5cm p.184, n0 27.

Aquarelle et encre sur papier blenti, 9 x 10 cm, from Charles-Alexandre Lesueur: *Peintre voyageur, un trésor oublié*, p.185.



Aquarelle et encre papier blenti, 15 x 22 cm, from Charles-Alexandre Lesueur: *Peintre voyageur, un trésor oublié*, Gabrielle Baglione and Cédric Crémère, p.180.

Figure 19: Charles-Alexandre Lesueur, Espèce indéterminée— Mollusque,



Figure 20: Charles-Alexandre Lesueur, Méduse chysaora hysocella, Aquarelle et crayon sur vélem, 43.2 x 27.9 cm, from Charles-Alexandre Lesueur: *Peintre voyageur, un trésor oublié*, Gabrielle Baglione and Cédric Crémère, p.368.

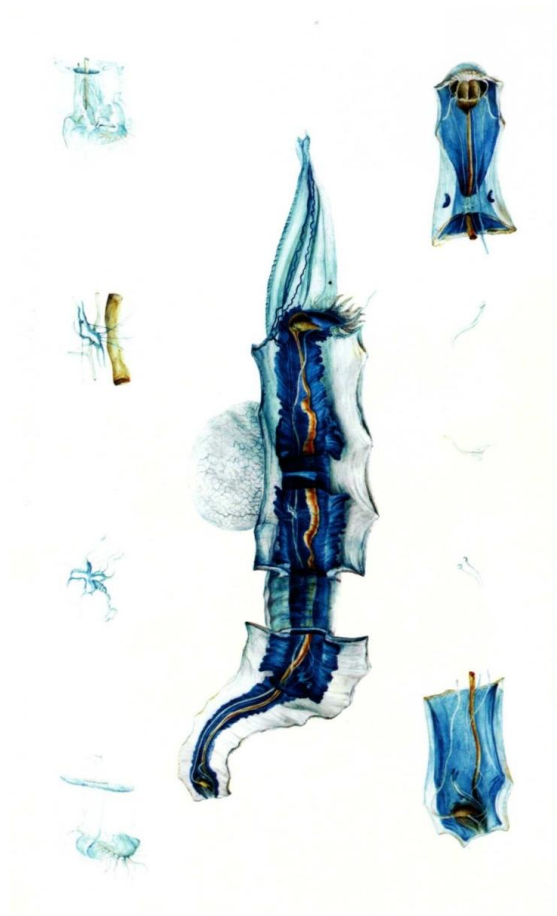
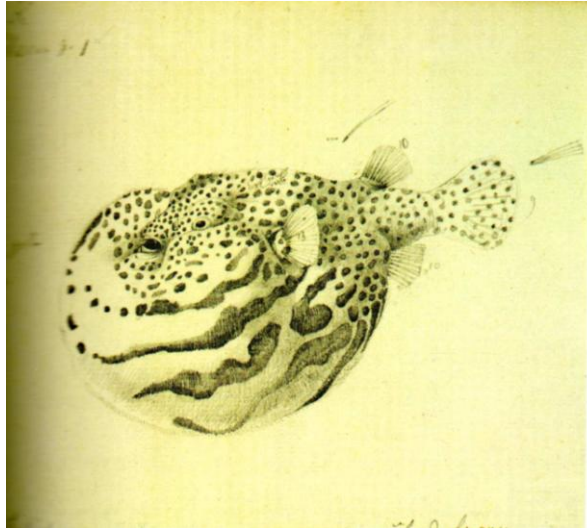
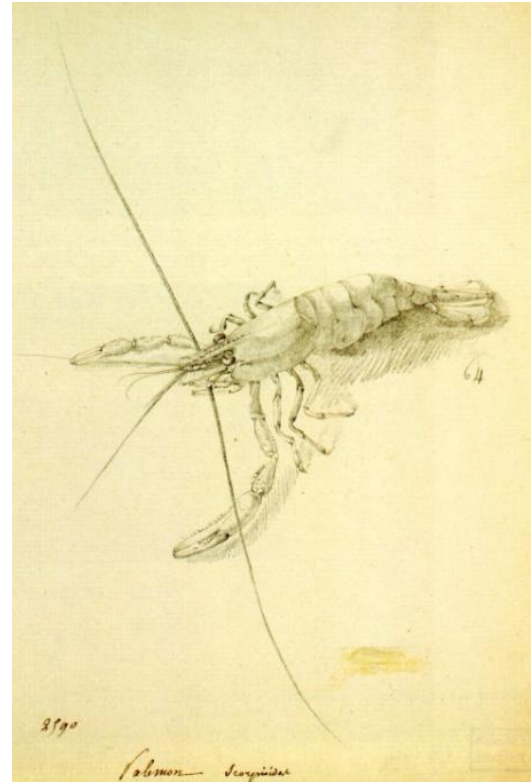


Figure 21: Charles-Alexandre Lesueur, Firole, Aquarelle sur vélem 28 x 43 cm, from Charles-Alexandre Lesueur: *Peintre voyageur, un trésor oublié*, Gabrielle Baglione and Cédric Crémère, p.372.





*Arothron aerostaticus*, crayon et encre sur papier, 18.5 x 16 cm, from Charles-Alexandre Lesueur: *Peintre voyageur, un trésor oublié*, Gabrielle Baglione and Cédric Crémère, p.55.



*Palemon scorpioides*, crayon et encre sur papier, 20.5 x 15 cm, from Charles-Alexandre Lesueur: *Peintre voyageur, un trésor oublié*, Gabrielle Baglione and Cédric Crémère, p.55.



Charles-Alexandre Lesueur, handcoloured lithograph, from *Voyage de découvertes aux terres Australes : exécuté par ordre de Sa Majesté l'empereur et roi, sur les corvettes le Géographe, le Naturaliste, et la goelette le Casuarina, pendant les années 1800, 1801, 1802, 1803 et 1804 ; [Historique] publié par décret impérial, sous le ministère de M. de Champagny et rédigé par M.F. Péron.*  
Figure 23: Detail of emu feather.

Figure 22: sketches made at Mauritius.



Figure 24: *Thylacinus cynocephalus*, George Harris, *Transactions of the Linnean Society, London*, 1808, <http://www.australiangeographic.com.au/journal/view-image.htm?index=78id=8432>, viewed 12 October 2011.



Figure 25: Sketches of different kangaroos drawn from life: study drawings of different attitudes that are found also in certain vellum paintings. Pencil drawing, 12.5 x 19.5 cm. From J. Bonnemains 'The Artists of the Baudin Expedition', p.318.



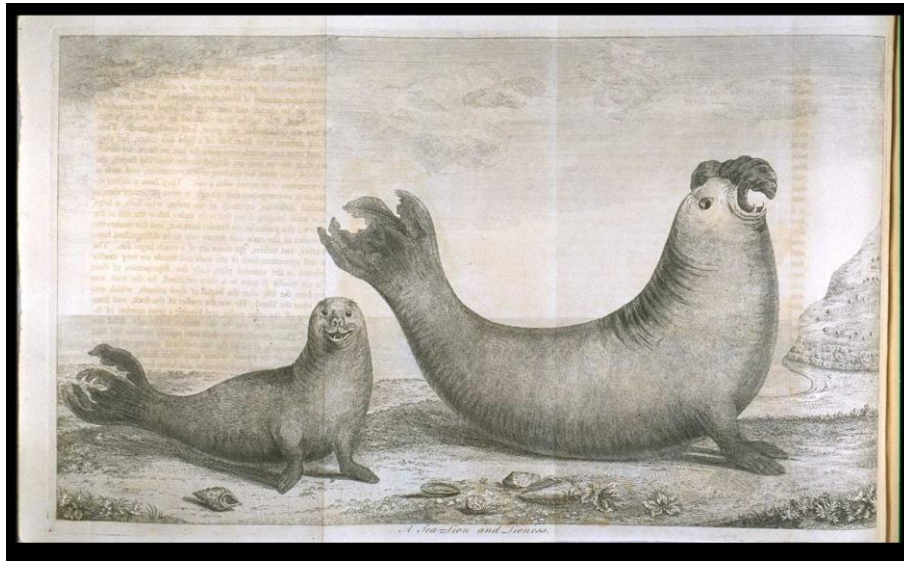


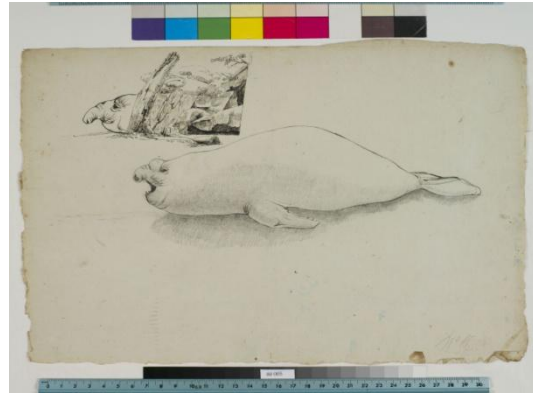
Figure 26: Sea Lion and Lioness. From 'A Voyage Round the World in the Years 1740-1744', Knapton, 1748.  
[http://www.lindahall.org/events\\_exhibit/exhibits/voyages/anson.shtml](http://www.lindahall.org/events_exhibit/exhibits/voyages/anson.shtml), viewed 21 February 2011.



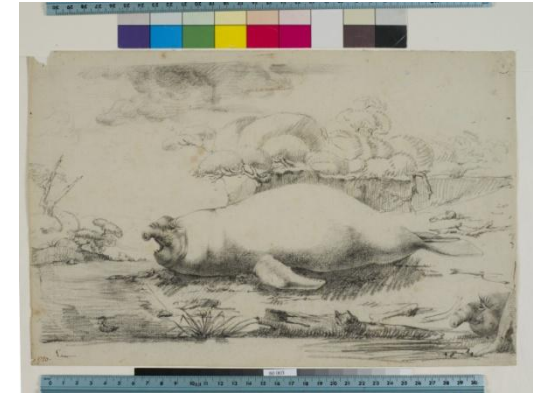
Figure 27: The sea lion of Pernetty: From 'The Natural History of the amphibious carnivores including the walrus and seals, also of the herbivorous cetacea, etc.' 1839. Hand coloured etching.  
<http://digitalgallery.nypl.org/nypldigital>, viewed 21 February 2011.



8004: 22 x 35 cm; ink and pencil.  
Sketches of two seals seen full face.



8005: 23 x 35 cm; ink and pencil. Left profile of  
seal; detail of head.



8003: 21 x 34 cm; pencil, charcoal and ink.  
Left profile of a seal on a seashore, the head  
of a second seal on the right.



8002: 21 x 34 cm; pencil, charcoal and  
ink, Antero-lateral view of a seal; a  
different landscape from the preceding  
one; a ship on the horizon.



8001: 25 x 40 cm; watercolour, Two sea elephants lie on a  
sandy beach scattered with seaweed and a few haliotis  
shells; the head of a third seal appears on the right.



Engraving, Nouvelle- Hollande: Ile King,  
l'elephant marin ou phoque a trompe, engraver:  
Victor Pillemont

Artist: Charles Alexandre Lesueur, 1807, 32.9 x  
24.8 mm, paper, ink, [http://emuseum.anmm.gov.au/  
code/emuseum.asp?id=48633](http://emuseum.anmm.gov.au/code/emuseum.asp?id=48633), viewed, 5 May 2011.

Figure 28: Charles Alexandre Lesueur, *Mirounga leonina*.



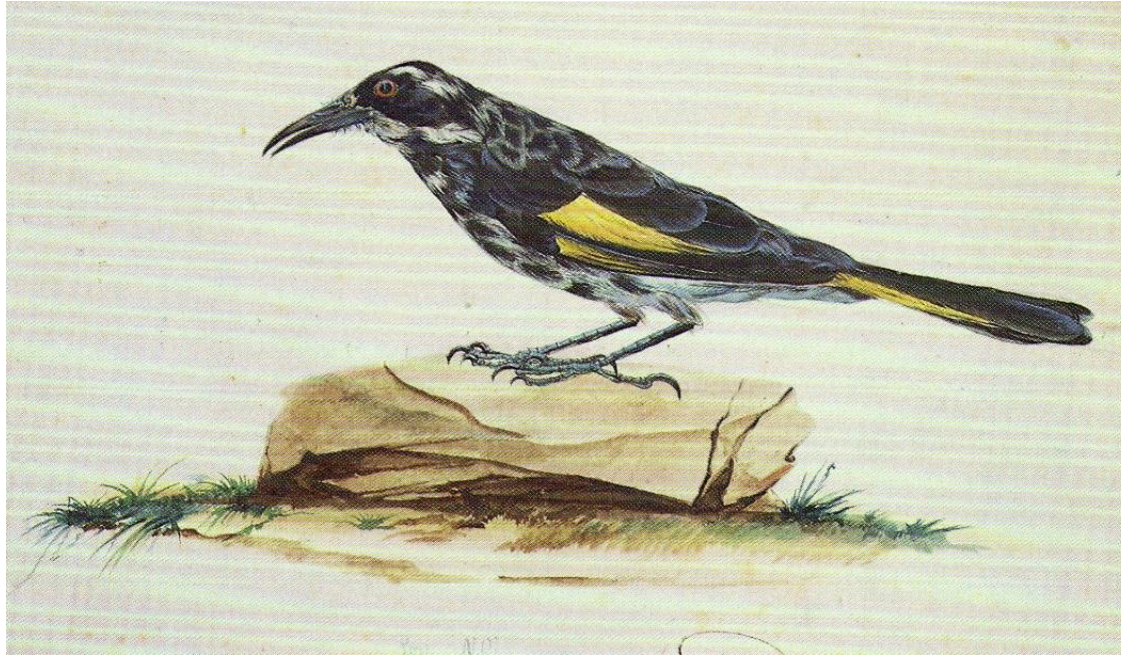


Figure 29: New Holland Honeyeater (*Phylidonyris novaehollandiae*), Charles-Alexandre Lesueur, watercolour, pencil and ink, 14.5 x 25 cm, from J. Bonnemains 'The Artists of the Baudin Expedition', p.301.



Figure 30: *Agrostemma (silene) coronaria*, Ferdinand Bauer, from *Flora Graeca* by John Sibthorp, 1806, <http://www.gimcw.org/plants/silene.coronaria.cfm>, viewed 24 August 2011.



Figure 31: Ellis aquatic microscope c. 1775.  
[http://www.antique\\_microscopes.com/photos/ellis.htm](http://www.antique_microscopes.com/photos/ellis.htm), viewed 24 August 2011.



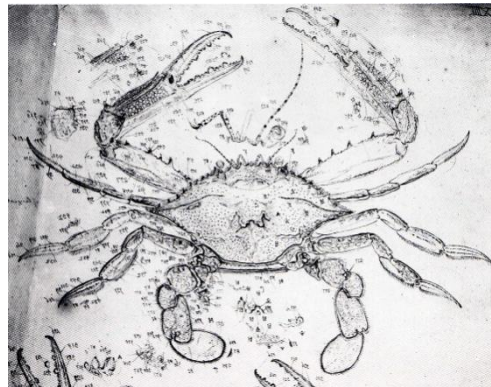
Figure 32: Ferdinand Bauer's colour chart,  
<http://botanicalillustration.blogspot.com/2010/07/ferdinand-bauers-andthaddaus-haenkes.html>, Madrid Royal Botanic Gardens, viewed 25 August 2011.



*S. Parkinson Dillenia alata, pencil and watercolour*



*F. Nodder, finished watercolour, 54.5 x 36.5 cm, from H. Hewson Australia: 300 years of botanical illustration, p.26*



*F. Bauer, blue swimmer crab (Portunus pelagicus), pen and ink, Natural History Museum, London. From T. Rice 'Voyages of Discovery', p.222.*



*completed watercolour. Natural History Museum, London. From T. Rice 'Voyages of Discovery', p.223.*

*Figure 33: Details of Parkinson and Bauer's sketches.*





*Ferdinand Bauer, Koala (Phascogale cinerea), Shot at Hat Hill, New South Wales, June/Sept 1803, watercolour 33 x 50.6 cm, Natural History Museum London, Bauer Zoological Number 5.*



*Ferdinand Bauer, Corybas unguiculatus, watercolour 49.9 x 32.7 cm, Natural History Museum London, Bauer Botanical Number 186A.*



*Ferdinand Bauer, Koala (Phascogale cinerea), Shot at Hat Hill, New South Wales, June/Sept 1803, watercolour 51.2 x 33.7 cm, Natural History Museum London, Bauer Zoological Number 9.*

*Figure 34: Koala.*



*Ferdinand Bauer, Corybas unguiculatus, watercolour 52.7 x 35.7 cm, Natural History Museum London, Bauer Botanical Number 186B.*

*Figure 35: Corybus unguiculatus A and B.*





Figure 36: *Grevillea banksii*, from 'Illustrationes florae Novae Hollandiae' 1813, handcoloured line and stipple engraving, 51 x 34 cm. Allport Library and Museum of Fine Arts.

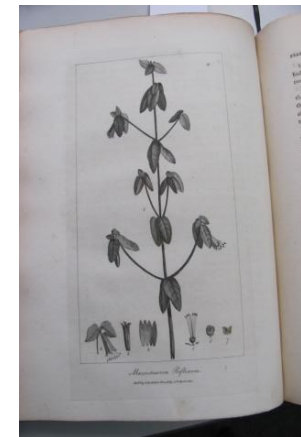
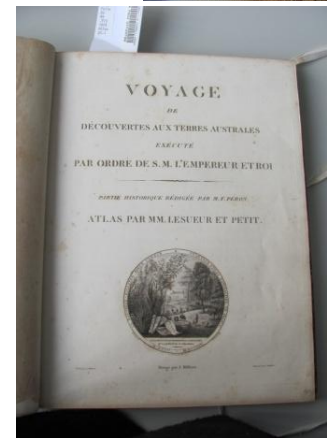


Figure 37: (top) Charles-Alexandre Lesueur, handcoloured lithograph, from *Voyage de découvertes aux terres Australes : exécuté par ordre de Sa Majesté l'empereur et roi, sur les corvettes le Géographe, le Naturaliste, et la goelette le Casuarina, pendant les années 1800, 1801, 1802, 1803 et 1804 ; [Historique] publié par décret impérial, sous le ministère de M. de Champagny et rédigé par M.F. Péron.* (bottom) Jean-Pierre Redouté, etching, from *Voyage in search of La Perouse : performed by order of the constituent assembly, during the years 1791, 1792, 1793 and 1794.*

## *The Convict — arriving at the periphery — 1803 to 1837*



Figure 38: William Buelow Gould by Thomas Bock, c1840, watercolour on cardboard, 8.6 x 5.7 cm, Tasmanian Museum and Art Gallery.



Figure 39: Spode china c. 1820. Vase: <http://www.tarring-antiques.com/302.htm>, viewed 29 August 2011.  
Spode plate: 1820  
[http://vanbrughwestantiques.com/view\\_category.php?category\\_id=12](http://vanbrughwestantiques.com/view_category.php?category_id=12), viewed 29 August 2011.

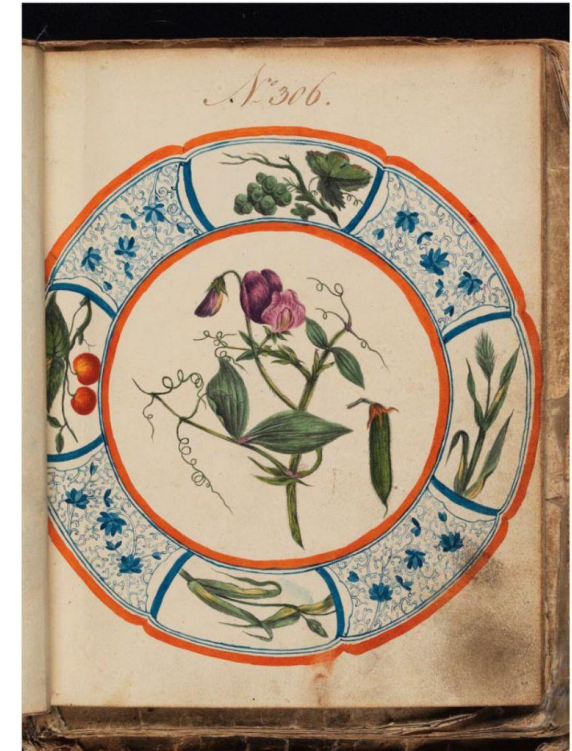


Figure 40: Spode pattern book. Pattern 306 Dessert plate. Handpainted and gilded. The centre is directly copied from the illustration of *Lathyrus odoratus* in the *Botanical Magazine* 2: t. 60 (1788). (Courtesy of the Spode Museum Trust). from Pam Woolliscroft "Flora Ceramica." *Curtis Botanical Magazine* (2002), p.204.



*Polygonum adpressum*, *Curtis's Botanical Magazine*, Volume 59–Article 3145.



*Calochilus campetres*, *Curtis's Botanical Magazine*, Volume 59–Article 3187.

Figure 41: Illustrations claimed by James Scott.





*Euchilis obcordata* (Native Daphne), Gould, William Buelow, 1803–1853, for Dr. William de Little, 1832–1833, watercolour on paper, 20 x 16 cm, Allport Library and Museum of Fine Arts, attributed to William Buelow Gould, unsigned and undated, title inscribed lower right; also inscribed 'Macquarie Harbour Nov 30' lower left and '52' at upper right.



*Pittasporum bicolour*, 1830, watercolour on paper, 26.3 x 24.3 cm, Queen Victoria Museum and Art Gallery.



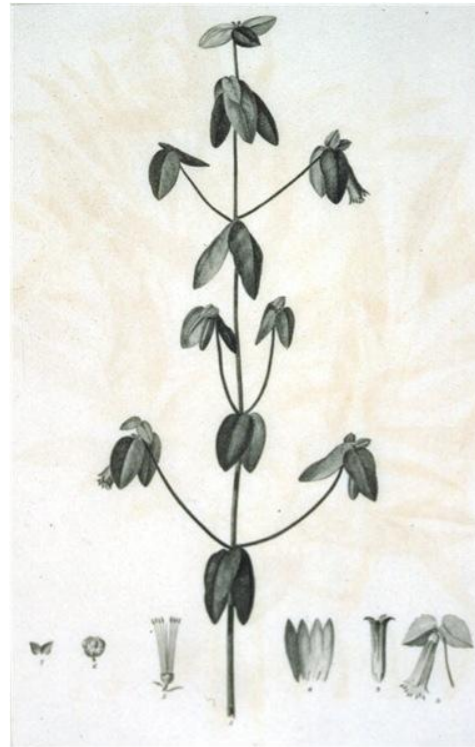
Blue flower, Gould, William Buelow (1803–1853), 1832–1833, watercolour on paper, 22 x 18 cm, Allport Library and Museum of Fine Arts, attributed to William Buelow Gould, unsigned and undated, inscribed at upper right '22 Blue flower', inscribed at lower left 'Macquarie Harbour [?] Marshy ground Nov 29th'.

Figure 42: Comparison of illustrations for James Scott and William de Little.

Figure 43: Blue flower.



*Correa reflexa*: William Buelow Gould, *Correa reflexa* by Gould, watercolour on paper, undated, 22 x 18 cm, Allport Library and Museum of Fine Arts.



*Mazeutoxeron reflexum* (now *Correa reflexa*), J.P. Redouté, Pierre-Joseph, From 'Voyage in search of La Pérouse, Vol2. Plates Pl.n.XIX', engraving, 23 x 14 cm. State Library of Tasmania.



*Correa reflexa*: <http://utas.edu.au/dicotkey/dicotkey/RUT/ZCorrea-reflexa?.htm>, photo copyright Greg Jordan, viewed 7 April 2011.

Figure 44: *Correa reflexa* by William Buelow Gould and Jean-Pierre Redouté.



Figure 45: Detail from *Correa reflexa* by Gould, watercolour on paper, undated, 22 x 18 cm, Allport Library and Museum of Fine Arts.



Figure 46: *Pomaderres apetata*, undated, watercolour on paper, 22.8 x 18.7 cm, Queen Victoria Museum and Art Gallery.



Figure 47: Pink Tall Plant, undated, watercolour on paper, 22 x 18 cm, Allport Library and Museum of Fine Arts.





Figure 48: *Kennedia prostrata*, watercolour on paper, 22 x 18 cm, 1827-183?, Allport Library and Museum of Fine Arts.



Figure 49: *Melaleuca squammata* (Scented Paper Bark), Gould, William Buelow (1803–1853), 1831, watercolour on paper, 22 x 18 cm, Allport Library and Museum of Fine Arts.



*Gould, William Buelow (1803–1853), in Gould's sketchbook of fishes, Item 34, ca. 1832, watercolour on paper, 18.5 x 22.9 cm, Allport Library and Museum of Fine Arts.*

*Figure 50: Freshwater crayfish.*



*Astacopsis gouldi, courtesy Tasmanian Museum and Art gallery, <http://collections.ala.org.au/public/show/in25>, viewed 1 September 2011*

*Figure 51: Astacopsis gouldi (left), Astacopsis tricornis (left).*

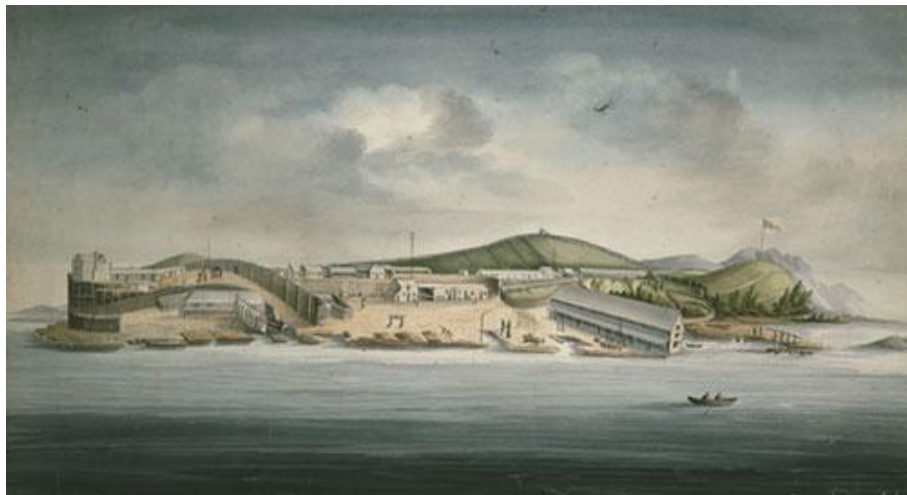


*Astacopsis tricornis, <http://www.flicks.com/photos/22841787%27no8/3386236937/>, viewed 1 September 2011.*





*Figure 52: Flounder, Gould, William Buelow (1803–1853), in Gould's sketchbook of fishes, item 3, ca. 1832, watercolour on paper, 19 x 23 cm, Allport Library and Museum of Fine Arts.*



*Figure 53: Sarah Island, Macquarie Harbour, 1853; watercolour, 29.5 x 55.5 cm, Mitchell Library, New South Wales State Library.  
<http://www.sl.nsw.gov.au/events/exhibitions/2006/ontherun/images/s6.html>, viewed 7 April 2010.*



*Figure 54: Hooker and company journeying through the wilderness from Plymouth to Hartford, 1636. (1846), Frederick Edwin Church, 800 x 535 cm, oil on canvas, <http://www.museumsyndicate.com/images/2/11051jpg>, viewed 14 February 2010.*



Figure 55: Still life by Gould: Still life bunch of flowers ca 1838, oil on tin, 17 x 23 cm.  
Allport Library and Museum of Fine Arts.



Figure 56: Spode plate: 1820  
[http://vanbrughwestantiques.com/view\\_category.php?category\\_id=12](http://vanbrughwestantiques.com/view_category.php?category_id=12), viewed 29 August 2011.



*Figure 57: Birds, oil on canvas, undated, 70 x 60 cm, private collection, Hobart.*



*Figure 58: Game—Still Life with Birds, 1836, watercolour on white paper, 23.5 x 33.5 cm, Queen Victoria Museum and Art Gallery.*





Figure 59: *Fish on a Blue and White Plate*, 1845, oil on canvas 20.3 x 30.5 cm, private collection, Hobart.



Figure 60: *Still life with Game and Fish*, William Buelow Gould, oil on canvas, 75 x 61.5 cm,  
[http://www.mossgreen.com.au/auctions/artwork\\_detail.asp?idimage=22462](http://www.mossgreen.com.au/auctions/artwork_detail.asp?idimage=22462)  
 , viewed 5 September 2011.



*Figure 61: Imaginary River Scene: Imaginary river Scene, 1838, oil on paper mounted on wood panel, 30 x 36 cm, William Crowther Library, State Library of Tasmania.*



*Figure 62: Cole, Thomas (1801-1848)  
View from Mount Holyoke, Northampton, Massachusetts, after a Thunderstorm—  
The Oxbow. 1836. Oil on canvas, 130.8 x 193 cm, The Metropolitan Museum of Art,  
New York, NY, U.S.A.*



## The Settlers — living at the periphery — 1838 to 1846



Figure 63: *Mary Morton Allport and her children*: by Mary Morton Allport, ca 1837, watercolour on ivory, 10 x 7 cm. Allport Library and Museum of Fine Arts.



Figure 64: *Mary Morton Allport, Christ Church. West Bromwich*, watercolour on paper, 12 x 16 cm, Allport Library and Museum of Fine Arts.



Figure 65: *Brunonia australis*: M.M. Allport, 1845?, watercolour on paper mounted on album page, 25 x 33 cm. Allport Library and Museum of Fine Arts.



Figure 66: *Telopea truncata* from the mountain pass above Barrett's Mill: M. M. Allport, 1845?, watercolour on paper mounted on card, 24 x 17 cm, Allport Library and Museum of Fine Arts.

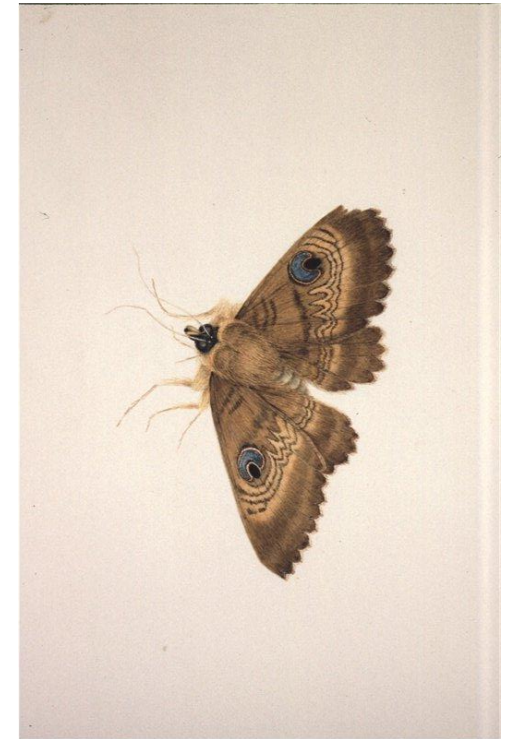




*Australian Admiral Butterfly, 1845?, watercolour and pen and ink on paper, inserted in album page; 25 x 33 cm (page size), Allport Library and Museum of Fine Arts.*

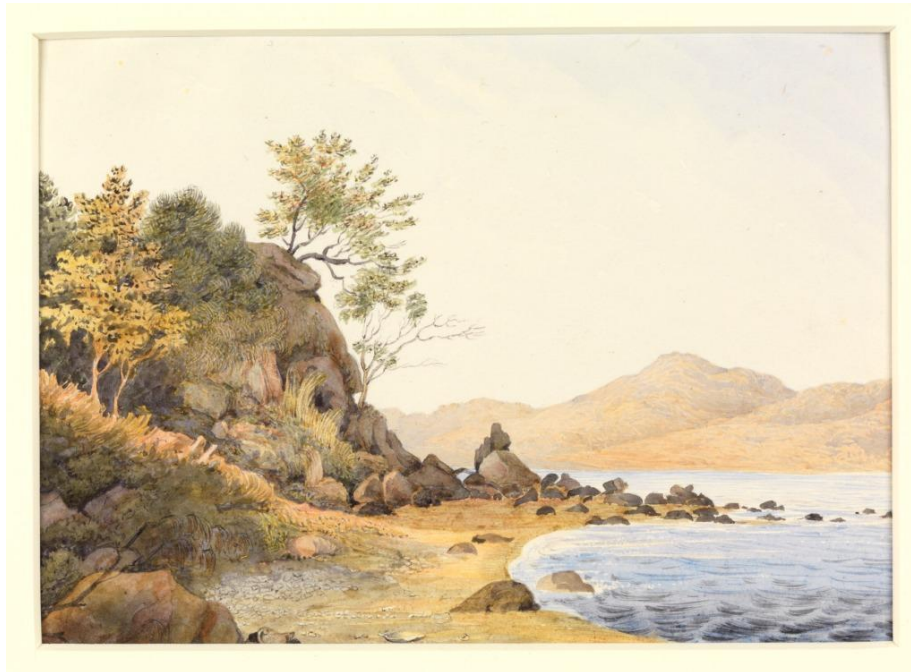


*Four caterpillars, eggs and cocoon on gum tree twig, 1845?, watercolour and pen and ink on paper; 17 x 25 cm, Allport Library and Museum of Fine Arts.*



*Old Lady Moth, 1845?, watercolour on paper, mounted on card; 18 x 26 cm, Allport Library and Museum of Fine Arts.*

*Figure 67: Mary Morton Allport, insect drawings.*

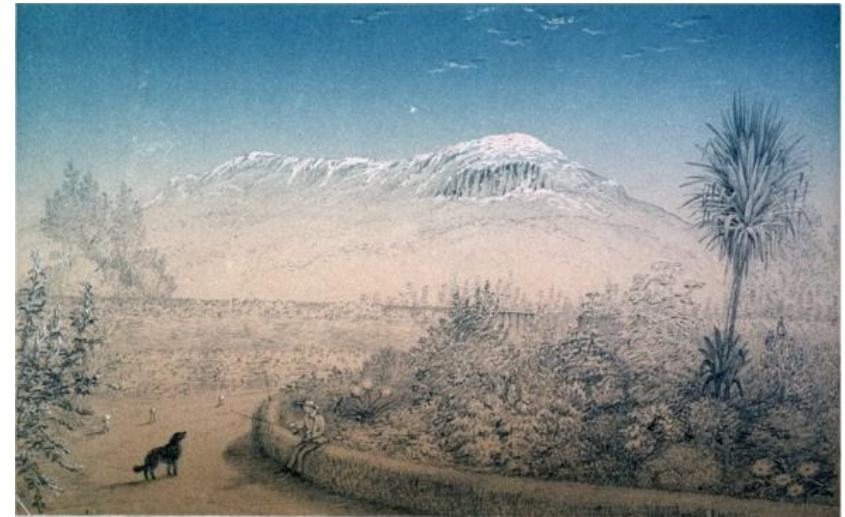


*Beach below Sandy Bay, date unknown, watercolour on paper, 14 x 18 cm, Allport Library and Museum of Fine Arts.*

*Figure 68: Beach below Sandy Bay.*



*Mary Morton Allport, Dry's Bluff on Morton's Wedding day, 1846, watercolour on paper, 10 x 22 cm, Allport Library and Museum of Fine Arts.*



*Mary Morton Allport, Evett & Grouse, date unknown, pencil on scraper-board, 14 x 21 cm, Allport Library and Museum of Fine Arts*

*Figure 69: Mary Morton Allport, landscapes.*





Figure 70: Louisa Anne Meredith on doorstep, between 1858 and 1863, photographic print, albumen, sepia toned, 9 x 7 cm (photograph believed to be by Bishop Francis Nixon). Allport Library and Museum of Fine Arts Tasmania.



Figure 71: Anemone, 1836, handcoloured print, 13.3 x 21.6 cm, [http://64.64.17.13/~sbadmin/product-info.php?Louisa\\_Anne\\_Twamley-pid2730.html](http://64.64.17.13/~sbadmin/product-info.php?Louisa_Anne_Twamley-pid2730.html), viewed 12 June 2011.

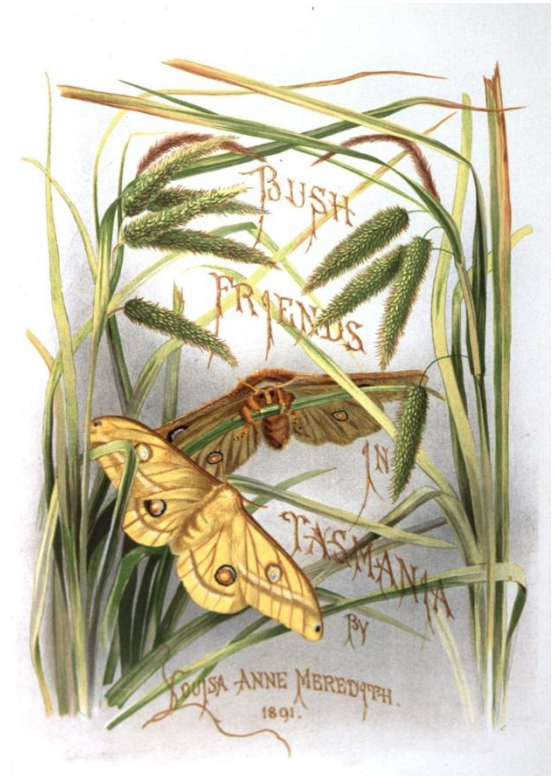
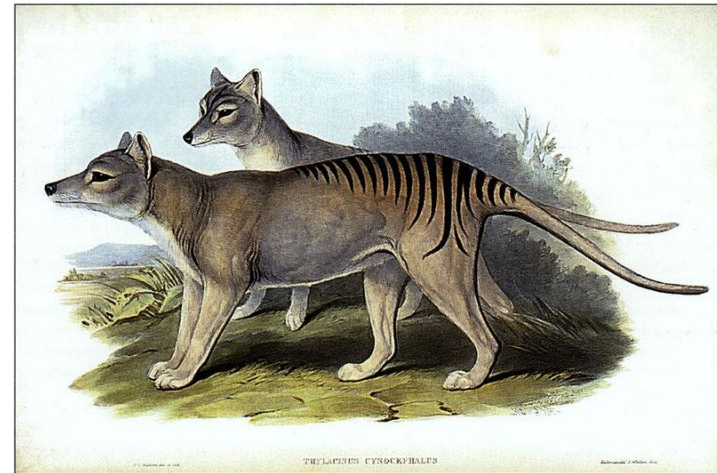
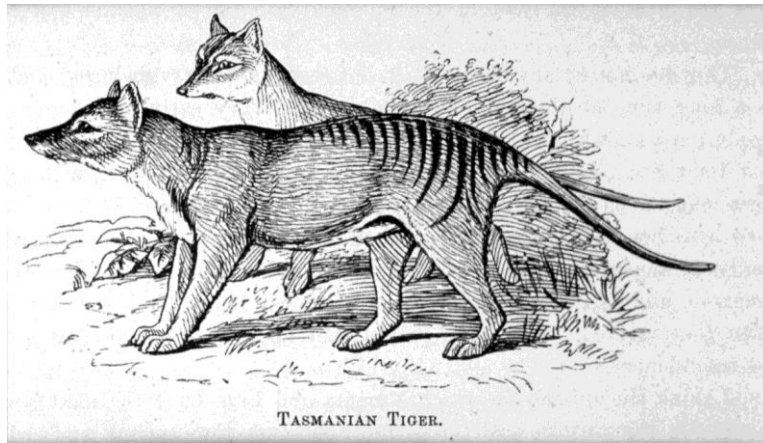


Figure 72: Louisa Anne Meredith, *Bush Friends, Corn-eared Water Sedge with moths*, 1891, coloured print, 33 x 23 cm, Tasmaniana Library.



*Tasmanian Tiger by H.C. Richter for Gould: hand coloured lithograph on wove paper, 37.5 x 55.3 cm, Tasmanian Museum and Art Gallery.*



*Figure 73: Tasmanian Tiger and Platypus: Louisa Anne Meredith, from 'Tasmanian friends and foes: feathered, furred and finned, black and white, 7 x 10 cm. Allport Library and Museum of Fine Arts.*



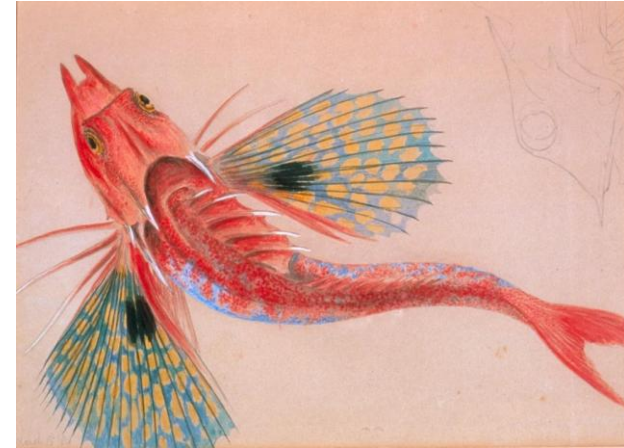
*Platypus  
http://www.nma.gov.au/about\_us/nma\_corporate\_documents/annual\_report/08\_09/part\_1  
re, viewed 5 September 2011.*

*Figure 74: Platypus and Tasmanian Tiger by HC Richter for J Gould.*





Figure 75: *Flowers*; L.A. Meredith, from 'Bush Friends in Tasmania: native flowers, fruits and insects', coloured print, 33 x 33 cm. Allport Library and Museum of Fine Arts.



(top) Butterfly gurnard (*Lepidotrigla vanessa*), pencil and watercolour on wove paper, 27.1 x 37.7 cm, (bottom) Long Snout Boar Fish (*Pentaceropsis recutirostris*), pencil and watercolour on wove paper, 27.3 x 37.6 cm, Tasmanian Museum and Art Gallery.

Figure 76: *Fish studies* by Louisa Anne Meredith



Figure 77: Spring Vale cottage, Louisa anne Meredith, from *My Home in Tasmania*, Vol. 1 p.218, 1852, black and white, 7 x 8 cm, Allport Library and Museum of Fine Arts.

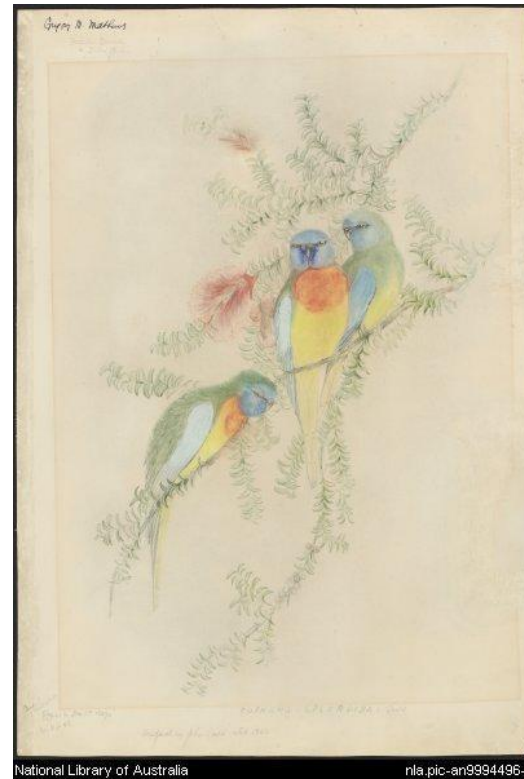


Figure 78: Ephemera splendida, John Gould, 1846, pencil and crayon, 53 x 37.5 cm, [http://nla.gov.au/nla.pic\\_an9994496](http://nla.gov.au/nla.pic_an9994496), viewed, 5 September 2011.



Figure 79: Elizabeth Gould, from *The Story of Elizabeth Gould*.



Figure 80: Black-headed Honey-eater (left): Elizabeth Gould, undated, watercolour over pencil, 38 x 38 cm. W.L. crowther Library, State Library of Tasmania, Crescent Honey-eater, Gould, [http://j\\_gould.tamagawa.jp/Japanese/ions/anst/anst4.html](http://j_gould.tamagawa.jp/Japanese/ions/anst/anst4.html), viewed 12 September 2011.



Figure 81: Crescent Honey-eater, [http://tassiebirds.blogspot.com/2008/03/0n\\_movecrescent\\_honeyea.html](http://tassiebirds.blogspot.com/2008/03/0n_movecrescent_honeyea.html), viewed 12 September 2011.





*Black-headed Honey-eater (right), Henry Constantine Richter, hand-coloured lithograph, 53.8 x 36 cm, Allport Library and Museum of Fine Arts.*

*Figure 82: Black-headed Honey-eater.*



*Black-headed Honey-eater, <http://www.parks.tas.gov.au/?base=5198>, viewed 12 September 2011.*



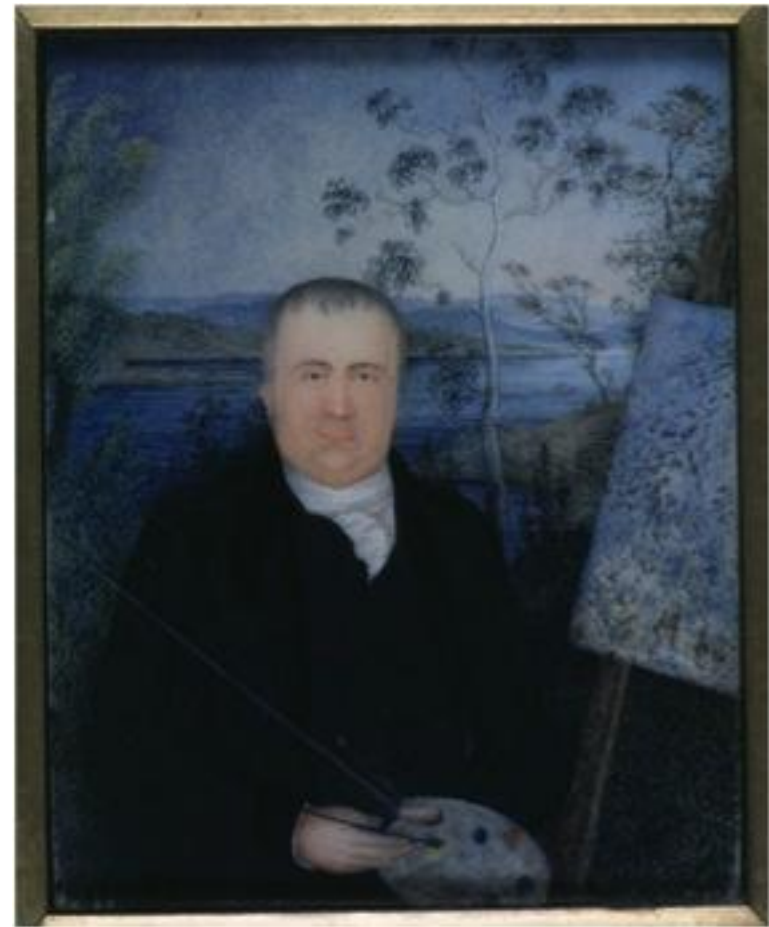
*Tasmanian Thornbill (Acanthizo ewingii): J. Gould and Henry Constantine Richter, del et lith, Henry Constantine Richter (1821–1902), hand colour lithograph, 54 x 35 cm, from *The Birds of Australia Vol III, pl 55*’, Allport Library and Museum of Fine Arts, State Library of Tasmania.*

*Figure 83: Tasmanian thornbill.*





*Figure 84: Southern Hairy-nosed Wombat: J. Wolf for J. Gould, pencil and watercolour, 36 x 54 cm, 1869. Allport Library and Museum of Fine Arts.*



*Figure 85: Portrait of John Glover; M.M.Allport, ca 1832, watercolour on ivory, 11.8 x 9.3 cm, Allport Library and Museum of Fine Arts, State Library of Tasmania.*



*Figure 86: Patterdale Van Diemen's Land, John Glover (1767–1849), 1840, oil on canvas, 74 x 114 cm, W. J. Crowther Library, State Library of Tasmania.*



*Figure 87: My Harvest Home, 1835, oil on canvas, 76 x 114 cm, Tasmanian Museum and Art Gallery.*

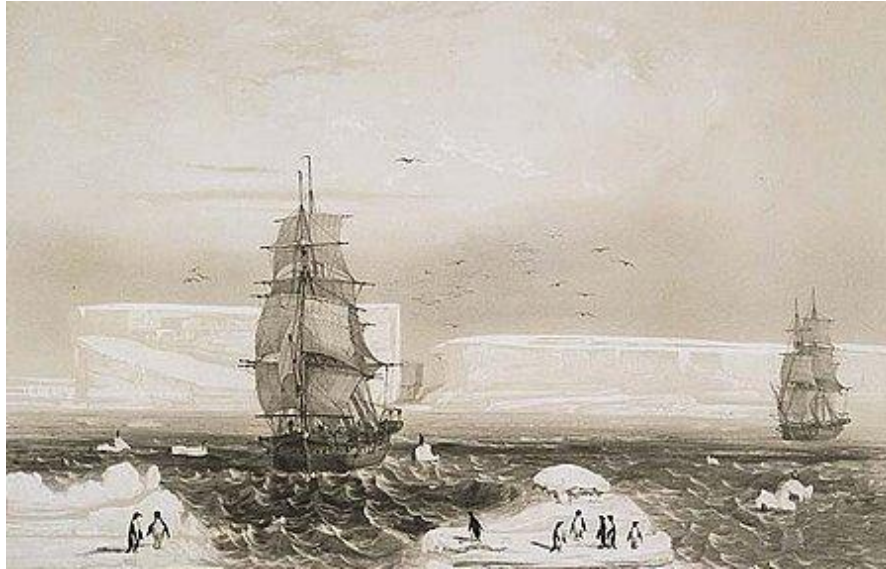


Figure 88: Adélie penguins: <http://216.194.68.240/~admin1/Antarctica>, viewed 9 May 2011.



Figure 89: Durville Crab by Borromée, 1837–1840, 52.7 x 34.3 cm, <http://www.georgeglazer.com/prints/nathis/marine/durvillecrab.html>, viewed 23 October 2011



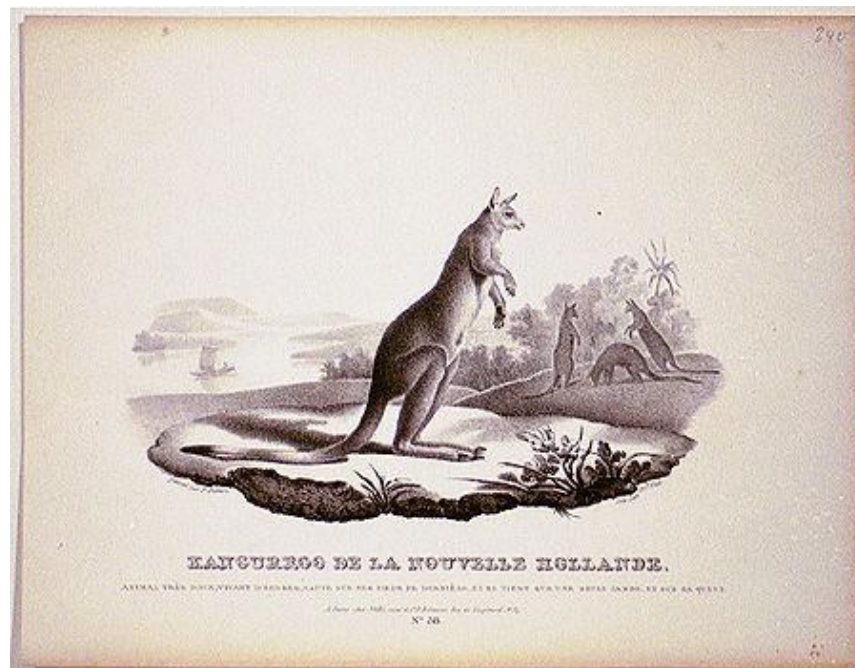


Figure 90: Kangurroode la Nouvelle Hollande: Outard, 1840s, lithograph, 13.3 x 24 cm. <http://www.joseflebovigallery.com/Catalogue/Archive>, viewed 9 May 2011.



Figure 91: *Dianella tasmanica* H.f., from *Flora Tasmaniae*, handcoloured lithograph, WH Fitch litho.



## The Tasmanian — living in the centre — 1847 to 1901



Figure 92: William Archer, in *Members of the Parliaments of Tasmania* No. 84, photograph: sepia toning ; 14 x 10 cm, by J. W. Beattie, Allport Library and Museum of Fine Arts.

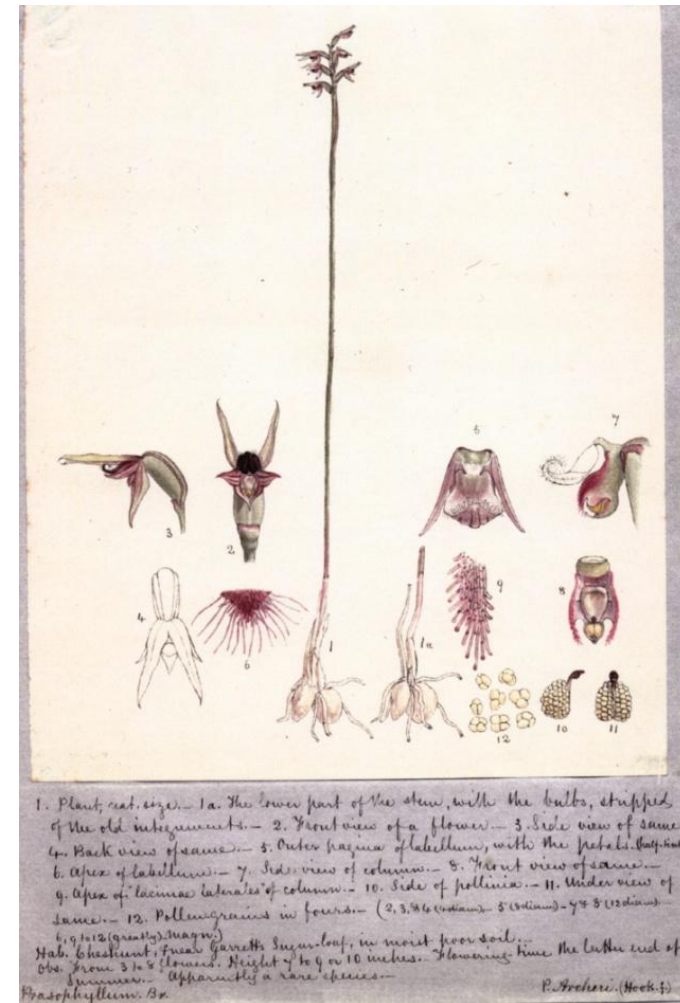


Figure 93: *Corunastylis archeri* (Hook.f.) D.L.Jones & M.A.Clem. (previously *Prasophyllum archeri* H.f), undated, 23.0 x 18.5 cm, watercolour and pencil, Tasmanian Museum and Art Gallery.



Figure 94: *Caladenia filamentosa* R.Br., (left) Linnean Society, watercolour and pencil, (right) from *Flora Tasmaniae*, handcoloured lithograph by WH Fitch.

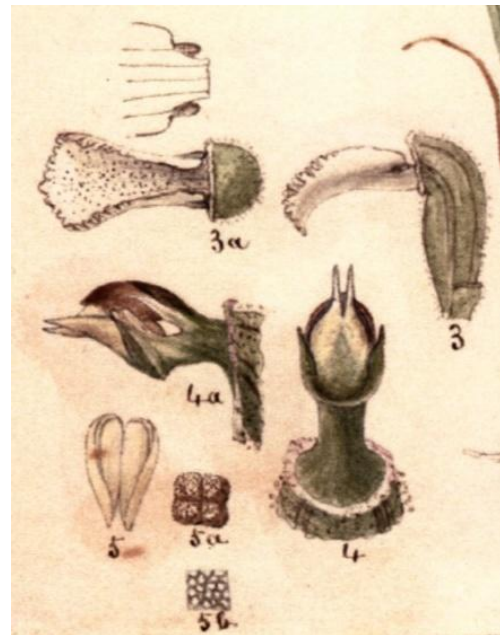


Figure 95: *Spiranthes australis* (R.Br.) Lindl., showing morphological details. Tasmanian Museum and Art Gallery.



Figure 96: Botanical microscope, Dolland, London, c. 1830, [http://www.antique\\_microscopes.com](http://www.antique_microscopes.com), viewed 29 September 2011.

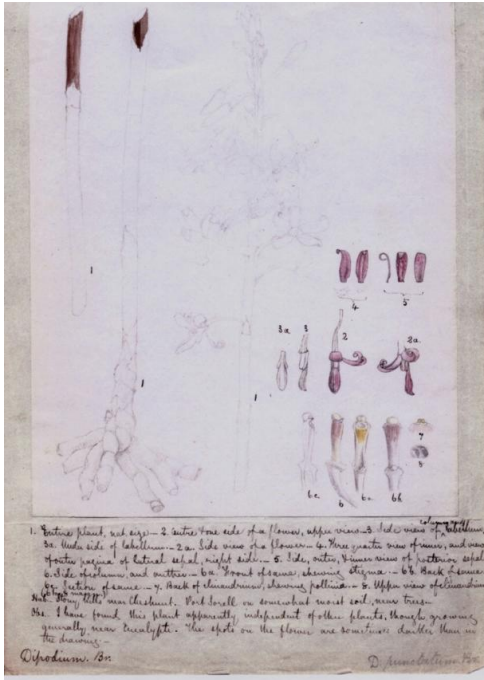


Figure 97: (left) *Dipodium roseum* D.L.Jones & M.A.Clem., undated, 23.0 x 18.5 cm, watercolour and pencil, Tasmanian Museum and Art Gallery, (right) *Dipodium roseum*, from *Flora Tasmaniae*, handcoloured lithograph by WH Fitch.



Figure 98: *Thelymitra antennifera* (Lindley) Hook.f., (left) Linnean Society, undated, watercolour and pencil, (right) from *Flora Tasmaniae*, handcoloured lithograph by WH Fitch.







Figure 99: William Charles Piguenit: by Kerry and Co., c1900, 14.0 x 10.4 cm, photograph, sepia toned, mounted on cardboard. W. L. Crowther Library, State Library of Tasmania.

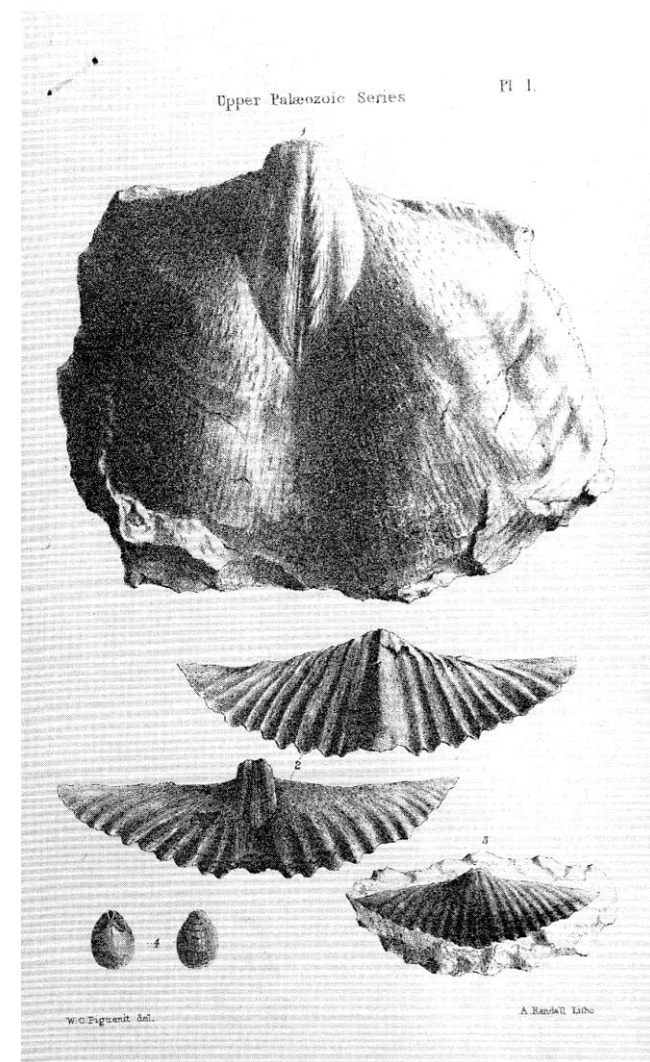


Figure 100: Permian Fossils: W. Piguenit, lithograph, 1868, from 'WC Piguenit Retrospective', p.13, Tasmanian Museum and Art Gallery.



*Figure 101: Mount Olympus, Lake Saint Clair, c. 1891, monochrome oil on cardboard, 118.1 x 218.4 cm, Tasmanian Museum and Art Gallery.*



*Figure 102: The Frenchman's Cap from the western flank of Mount Arrowsmith, 1887, monochrome oil on cardboard, 33.1 x 44.5 cm, Tasmanian Museum and Art Gallery.*



*Figure 103: Albert Bierstadt (1830-1902), The Oregon Trail, Oil on canvas, 1869, 78.7 x 125.7 cm, The Butler Institute of American Art, Youngstown, <http://173.9.6.225/Butler/src/Detail.php?Window=Enlargement&CRID=Coll424>, viewed 19 April 2011*



## Canadian and New Caledonian Case Studies



Unicorn,  
<http://pages.ufinit.net/cerame/heraldamerica/etudes/unicorn.htm>,  
 viewed 16 September 2011.  
 Figure 104: Unicorn from Codex canadiensis.



Codex canadiensis, Gessner, beaver, <http://archive.nlm.nih.gov/proj/ttp/Gessnergallery.htm>,  
 viewed 14 September 2011, elk



Conrad Gessner, <http://archive.nlm.nih.gov/proj/ttp/Gessnergallery.htm>, viewed 14 September 2011.

Figure 105: Codex canadiensis and Conrad Gessner.





Figure 106: Great Speckled Loon from New Foundland, Eleazer Albin (fl. 1690-c. 1742/79?), etching, from *A Natural History of Birds*, 1735, in the Peter Winkworth Collection, Library and Archives Canada, <http://www.collectionscanada.gc.co>, viewed 16 september 2011.



Figure 107: Canadian birds, JJ Audubon. (top left) Canada Goose, (top right), Great Blue Heron, Collection of John James Audubon Museum, Henderson, Kentucky, <http://www.boiseartmuseum.org/exhibit/past.php>, viewed 17 September 2011, (bottom), Spotted or Canada Grouse, 1833, handcoloured engraving with aquatint and etching by R. Havell, from *Birds of America*, 95.9 x 64.1 cm, <http://www.bibliopolis.com/>, viewed 17 September 2011.

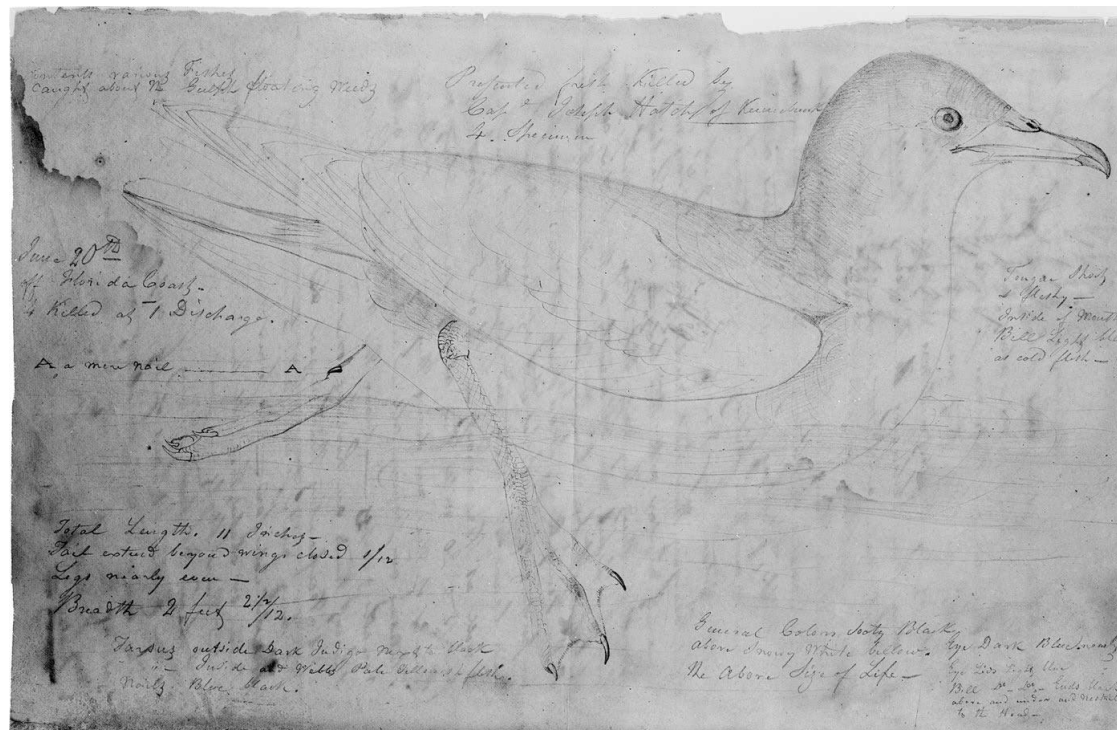


Figure 108: Shearwater, JJ Audubon, 1826, pencil sketch, Beinecke Rare Book and Manuscript Library, Yale University, [http://beinecke.library.yale.edu/dl\\_crosscollex/photoneg/oneITEM.asp?pid=39002036101906&ill](http://beinecke.library.yale.edu/dl_crosscollex/photoneg/oneITEM.asp?pid=39002036101906&ill), viewed 20 September 2011.



Figure 109: Indian Cup, Maria Morris (1810-1875), hand-coloured lithograph on paper, 32.5 x 25.5 cm, <http://www.collectionscanada.gc.ca/webarchives/20060119112151>, viewed 17 September 2011.



Figure 110: Maria Morris, <http://www.collectionscanada.gc.ca/webarchives/20060119112151>, viewed 17 September 2011.

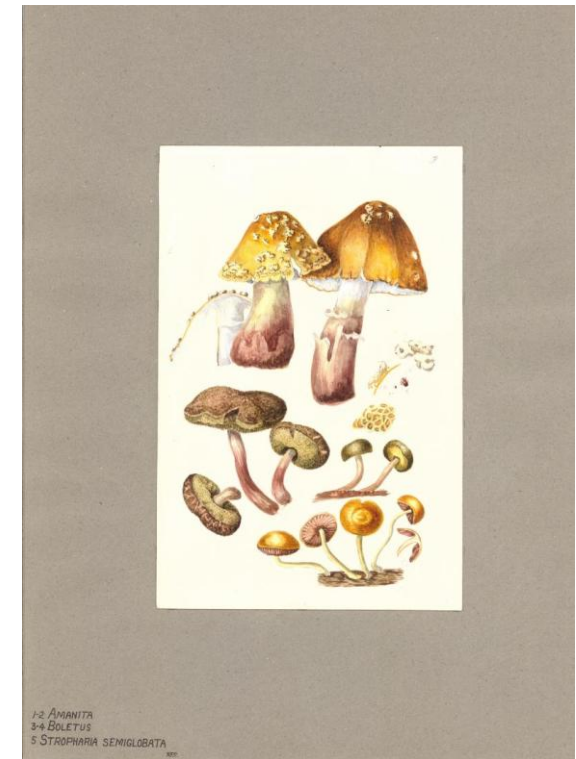




Figure 111: Agnes Chamberlin, frontispiece, *Canadian Wildflowers*, 1868, hand-coloured lithograph,  
[http://chamberlin.library.utoronto.ca/digobjectbook.cfm?idno=chamberlin\\_a\\_0003+Page=0005](http://chamberlin.library.utoronto.ca/digobjectbook.cfm?idno=chamberlin_a_0003+Page=0005), viewed 20 September 2011.

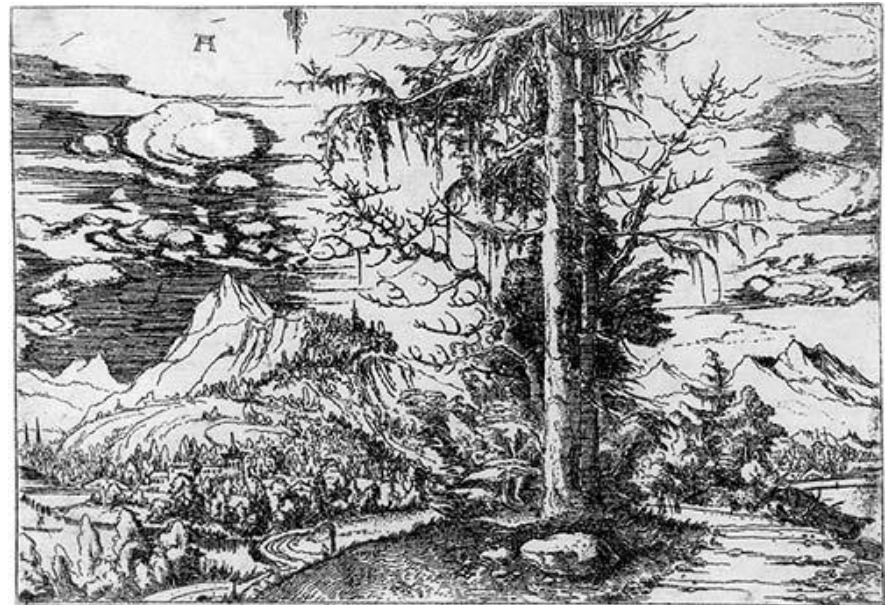


Figure 112: Agnes Chamberlin, (left) *Aster lindleyanus*, watercolour, 11.4 x 19.1 cm, Box 4, (right) *Ananita*, *Boletus*, *Stropharia semiglobata*, watercolour, Box 7,  
<http://chamberlin.library.utoronto.ca/digobjectbook.cfm?idno=>, viewed 20 September 2011.





*Figure 113: View of the Fall of Montgomery and the Attack made by General Wolfe on the French Intrenchments near Beaufort.*



*Figure 114: Albrecht Altdorfer, Landscape with a Double Spruce in the Foreground, c. 1520–22, etching, printed from iron, 11 x 16 cm, The Metropolitan Museum of Art, [http://www.metmuseum.org/toah/works\\_of\\_art/1993.1097](http://www.metmuseum.org/toah/works_of_art/1993.1097), viewed 14 September 2011.*



Figure 115: landscape: (left) *Landscape with wood carver*, c. 1522, pen, watercolour and gouache on paper, 20.1 x 13.6 cm, by Albrecht Altdorfer. (right) *The Jack Pine*: Tom Thompson, 1916-17, 127.9 x 139.8 cm, oil on canvas, National Gallery of Canada. <http://www.gallery.ca/en/see/collections/artwork.php?inkey=11056>, viewed 25 June 2011.





*Figure 116: Rivière Bleue Park on the Mainland: author's private photograph collection.*



*Figure 117: New Caledonian Night Heron (Nycticorax caledonicus), Georg Forster, from J. Robson Captain Cook Encyclopedia'', p.159.*



*Figure 118: Passiflora aurantia, Georg Forster, watercolour, Zoology Library, The Natural History Museum, from Voyages of Discovery, T. Rice, p. 192.*



Figure 119: Audebert, pinxt, Peree, sculpt, Pie de la Nouvelle Calédonie, etching, 30.5 x 44.7 cm, <http://catalogue.nla.gov.au/Record/1564181>, viewed 17 August 2011.



Figure 120: Redouté, Jean-Pierre, Antholoma montana, another New Caledonia native, <http://bibliodyssey.blogspot.com/20110106-archive.html>, viewed 15 July 2011.



Figure 121: Hachettea austro-caledonica, from Dictionnaire de botanique, Henri Baillon (1827–1895), chromolithograph by Portail, after August Faguet, 23 x 31 cm, <http://www.meemelink.com/prints/pages/prints/balanophoracea.htm>, viewed 20 September 2011.



Figure 122: Pied Cormorant, J Gould, from *Birds of Australia*, handcoloured lithograph, <http://www.nzbirds/littleshag.html>, viewed 20 September 2011.

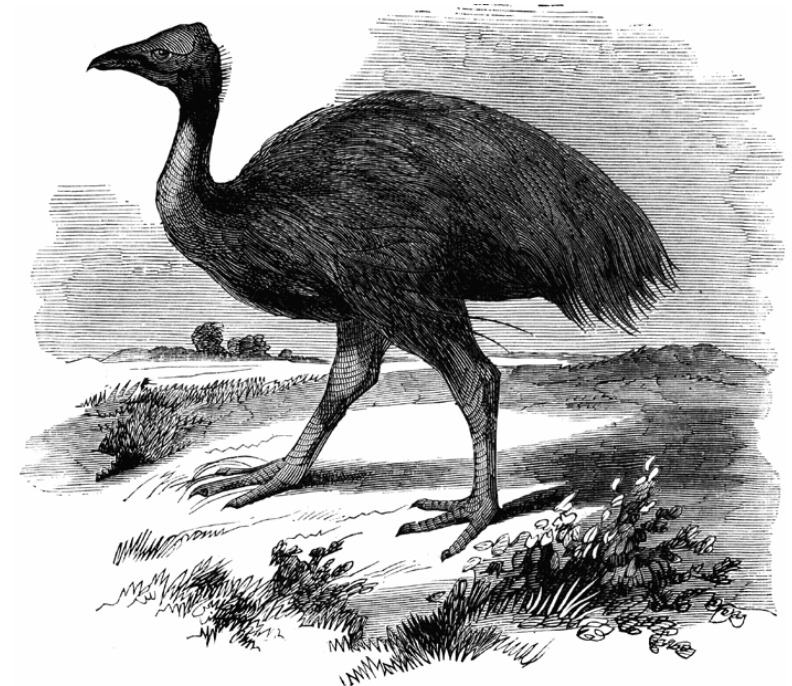
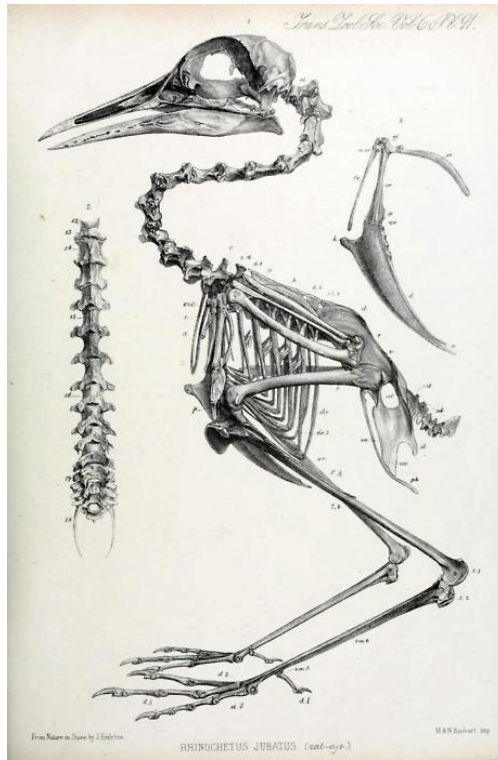
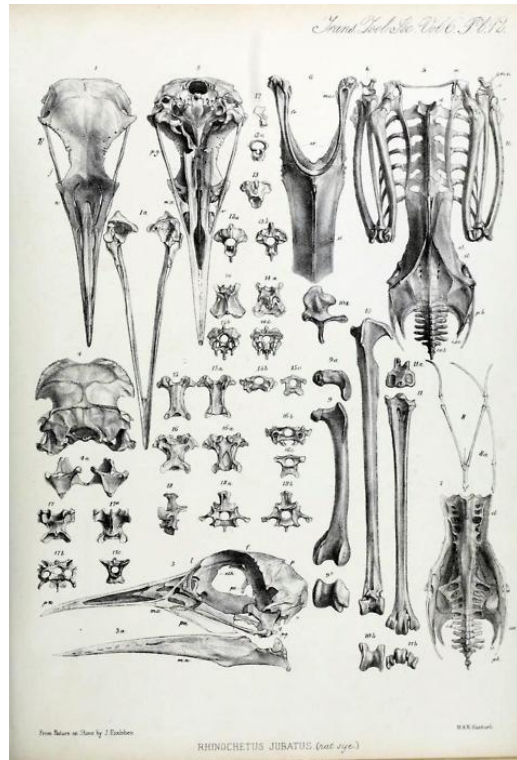


Figure 123: Moorak, from *Animal Kingdom Illustrated*, Vol 2, 1859, etching, [http://etc.usf.edu/clipart/13000/13053/moorak\\_13053.htm](http://etc.usf.edu/clipart/13000/13053/moorak_13053.htm), viewed 20 September 2011.





*Kagu or Cagou, Rhynchotus jubatus*, 1869 *Transactions of the Zoological Society of London*, viewed 20 September 2011, pp.523–524.  
Figure 124: Cagou



Photograph: author's private collection



*Figure 125: Tjibaou Cultural Centre, author's private collection.*