

SUPERGIANT SHELLS AND MOLECULAR CLOUD FORMATION IN THE LARGE MAGELLANIC CLOUD

J. R. DAWSON¹, N. M. MCCLURE-GRIFFITHS², T. WONG³, JOHN M. DICKEY¹, A. HUGHES⁴, Y. FUKUI⁵, AND A. KAWAMURA⁶
¹ School of Mathematics and Physics, University of Tasmania, Sandy Bay Campus, Churchill Avenue, Sandy Bay, TAS 7005, Australia; joanne.dawson@utas.edu.au
² Australia Telescope National Facility, CSIRO Astronomy & Space Science, Marsfield NSW 2122, Australia
³ Astronomy Department, University of Illinois, Urbana, IL 61801, USA
⁴ Max-Planck-Institut für Astronomie, Königstuhl 17, D-69117, Heidelberg, Germany
⁵ Department of Physics and Astrophysics, Nagoya University, Chikusa-ku, Nagoya, Japan
⁶ National Astronomical Observatory of Japan, Tokyo 181-8588, Japan
 Received 2012 September 6; accepted 2012 November 29; published 2013 January 8

ABSTRACT

We investigate the influence of large-scale stellar feedback on the formation of molecular clouds in the Large Magellanic Cloud (LMC). Examining the relationship between H I and $^{12}\text{CO}(J=1-0)$ in supergiant shells (SGSs), we find that the molecular fraction in the total volume occupied by SGSs is not enhanced with respect to the rest of the LMC disk. However, the majority of objects ($\sim 70\%$ by mass) are more molecular than their local surroundings, implying that the presence of a supergiant shell does on average have a positive effect on the molecular gas fraction. Averaged over the full SGS sample, our results suggest that $\sim 12\%$ – 25% of the molecular mass in supergiant shell systems was formed as a direct result of the stellar feedback that created the shells. This corresponds to $\sim 4\%$ – 11% of the total molecular mass of the galaxy. These figures are an approximate lower limit to the total contribution of stellar feedback to molecular cloud formation in the LMC, and constitute one of the first quantitative measurements of feedback-triggered molecular cloud formation in a galactic system.

Key words: evolution – galaxies: ISM – ISM: bubbles – ISM: molecules – Magellanic Clouds

Online-only material: color figures

1. INTRODUCTION

The formation of cold, dense molecular clouds from the atomic interstellar medium (ISM) is a key process in the evolution of galaxies, and sets fundamental boundaries on star formation rates. While recent work has shown that the presence of molecules is not strictly necessary for ongoing star formation (Glover & Clark 2012), molecular tracers nevertheless provide the best observational diagnostic of the coldest, densest phase of the ISM in all but the most metal-poor systems. Astrophysical drivers of dense (molecular) cloud formation in disk galaxies include global gravitational instabilities (Wada et al. 2000; Kim et al. 2002; Tasker & Tan 2009; Bournaud et al. 2010; Elmegreen 2011), the accumulation of matter in spiral shocks (Kim & Ostriker 2006; Dobbs et al. 2006, 2012; Dobbs & Bonnell 2008), and compression in large-scale expanding shells driven by stellar feedback (Hartmann et al. 2001; Elmegreen et al. 2002; Ntormousi et al. 2011), in all cases aided by turbulent compression that enhances density on a range of scales (e.g., Elmegreen 2002; Glover & Mac Low 2007). However, disentangling the relative contributions of these processes is usually not trivial, and the primary drivers—as well as the details of the physics—are still open to debate.

The role of stellar feedback in molecular gas production is of particular interest, since it is a key element in how star formation self-regulates. The cumulative energy input from stellar winds, supernovae, and ionizing radiation is able to form molecular clouds via the accumulation, compression, and cooling of the ambient ISM in giant ($100 \sim 1000$ pc) supershells around OB clusters (McCray & Kafatos 1987). From a theoretical perspective, gravitational (e.g., Elmegreen et al. 2002; Wunsch et al. 2012), fluid dynamical (e.g., Mac Low et al. 1989; Vishniac 1994), and thermal (e.g., Inoue & Inutsuka 2009) instabilities help to concentrate and fragment the walls of

expanding shells into dense clouds. More broadly, supershells fall within the scope of systems covered by the colliding flows theory of molecular cloud formation, in which molecular gas is formed rapidly from the atomic medium in the interfaces of turbulent ISM flows (e.g., Audit & Hennebelle 2005; Vázquez-Semadeni et al. 2006, 2007; Hennebelle et al. 2008; Heitsch & Hartmann 2008a; Banerjee et al. 2009; Inoue & Inutsuka 2012; Clark et al. 2012). Parameter space considerations suggest that small, thermally driven condensations will develop before shells are able to become unstable on the longer wavelengths associated with gravitational instability (Heitsch et al. 2008). However, global gravitational contraction helps to reduce overall timescales (Heitsch & Hartmann 2008b), and results suggest that the onset of self-gravity and the conversion to the molecular phase likely occur at roughly the same time (Hartmann et al. 2001; Vázquez-Semadeni et al. 2007).

Despite theoretical advances, there is as yet no consensus on the contribution of supershells to molecular cloud formation rates, and there is a strong need for data to constrain theory. Observationally, the association of molecular clouds with supershells has been reported in a number of studies (e.g., Jung et al. 1996; Koo & Heiles 1988; Carpenter et al. 2000; Kim & Koo 2000; McClure-Griffiths et al. 2000; Matsunaga et al. 2001; Yamaguchi et al. 2001a, 2001b; Dawson et al. 2008, 2011b), and has often been interpreted as evidence of the in situ formation of molecular gas in shell walls (e.g., Fukui et al. 1999b; Kim & Koo 2000; Matsunaga et al. 2001; Yamaguchi et al. 2001b). However, while the presence of molecular clouds in shell walls is indeed suggestive, it is important to make the distinction between association and formation, something that generally proves challenging for individual objects. Furthermore, large-scale stellar feedback can also be destructive—both in the initial ionization and dynamical disruption of birth clouds (e.g., Dale & Bonnell 2011; Dale et al. 2012; Walch et al. 2012), and in

the shock-destruction of pre-existing molecular clouds in the passage of an expanding shell (e.g., Klein et al. 1994; Pittard 2011; Dawson et al. 2011a).

From a galactic evolution perspective, the *net effect* of large-scale stellar feedback on the molecular gas fraction is therefore of critical importance—the question of whether a supershell ultimately causes an increase or a decrease in the quantity of molecular gas in the volume it occupies. One of the first studies to directly address this question was Dawson et al. (2011b), who found evidence of a net increase in the molecular gas fraction in two Galactic supershells. However, while the close proximity of Milky Way objects affords some advantages, Galactic studies suffer from difficulties in reliably identifying supershells and their associated emission in a confused Galactic Plane. To explore the question of the global influence of large-scale stellar feedback on a galactic system, we now turn away from the Milky Way and toward our nearest star-forming neighbor, the Large Magellanic Cloud (LMC).

In this paper, we compare the molecular and atomic content of the LMC disk within and outside of supergiant shell (SGS) systems in order to investigate the influence of large-scale stellar feedback on the molecular gas fraction of the ISM. SGSs are the largest and most energetic shells in the LMC, and those which we might expect to have the most dramatic effect on the evolution of the ISM. The LMC is an attractive target for this kind of study, due to its relative proximity ($d \sim 50$ kpc), nearly face-on orientation ($i \sim 35^\circ$; van der Marel & Cioni 2001), and the presence of a large population of supershells and shell-like structures in its gaseous disk (e.g., Meaburn 1980; Kim et al. 1999; Chu & Mac Low 1990). Excellent spectral-line data exist at arcminute resolutions for both the atomic and molecular components of the ISM, the former in the H I 21 cm line (Kim et al. 1998; Staveley-Smith et al. 2003) and the latter in $^{12}\text{CO}(J=1-0)$ (Fukui et al. 1999a; Mizuno et al. 2001; Fukui et al. 2008). In Section 2 we describe these data sets. Section 3 then outlines our method of selecting and defining supergiant shells, describes the basic analysis and its assumptions, and examines sources of uncertainty. Section 4 describes our results, which are discussed further in Section 5. We finally summarize our conclusions in Section 6.

2. DATA SETS

2.1. H I

The LMC was observed in the H I 21 cm line with the Australia Telescope Compact Array (ATCA) and the Parkes 64 m telescope, both of which are operated by CSIRO Astronomy and Space Science (CASS). Details of the observations and data combination are given by Kim et al. (1998, 2003) and Staveley-Smith et al. (2003). The combined datacube covers an area of 7.5×7.5 at an effective resolution of $1'$ (~ 15 pc), and a 1σ brightness temperature sensitivity of 2.4 K in a 1.65 km s^{-1} velocity channel. For consistency with the CO data, the cube was regridded to the kinematic local standard of rest (LSR) velocity frame and smoothed to a resolution of 2.6 . The main H I integrated intensity ($I_{\text{H I}}$) image used in this work is integrated over the velocity range $175 < v_{\text{LSR}} < 375 \text{ km s}^{-1}$, which contains all emission in the disk.

2.2. $^{12}\text{CO}(J=1-0)$

An unbiased survey of the LMC in the 115 GHz $^{12}\text{CO}(J=1-0)$ line was carried out with the 4 m NANTEN telescope in Las Campanas, Chile, operated by Nagoya University. The

survey covered a total area of $\sim 30^\circ$ and consisted of $\sim 26,900$ positions observed on a $2'$ grid, with an integration time of ~ 3 minutes per pointing. This spacing slightly undersamples the main beam, which has HPBW ~ 2.6 (~ 40 pc). The mean 1σ brightness temperature sensitivity is ~ 0.06 K in a 0.65 km s^{-1} velocity channel, but varies between ~ 0.04 and ~ 0.09 K in different subregions of the map. Further details of the observing strategy and data reduction are given by Fukui et al. (2008).

Following Wong et al. (2011), we apply a *smooth-and-mask* technique to extract real emission features from the data. This method is chosen because it is effective in recovering weak emission features from the CO cube, but results in no final degradation in resolution. The datacube is first convolved in the spatial domain with a Gaussian of twice the width of the telescope beam, smoothing it to a resolution of $6'$. This suppresses noise which should be uncorrelated between beam areas, but picks out any signal which is spatially resolved by the beam. A mask is then generated from this cube which retains only voxels detected above the 3σ noise level. This mask is applied to the original unsmoothed cube, and the resulting emission integrated over the full cube velocity range of $200 \text{ km s}^{-1} < v_{\text{LSR}} < 305 \text{ km s}^{-1}$ to produce a map of integrated intensity, I_{CO} . This velocity range differs slightly from that of H I, but contains all detected CO emission in the LMC (Mizuno et al. 2001). The mean rms noise of 0.06 K per 0.65 km s^{-1} channel corresponds to an integrated intensity sensitivity limit of 0.07 K km s^{-1} for a line detection across three contiguous channels. We perform a final cleaning step to suppress noise in the I_{CO} map by blanking pixels below $4\sigma = 0.28 \text{ K km s}^{-1}$. This results in a final map in which weak spectral features are well recovered with no loss of resolution.

3. METHODOLOGY

3.1. Object Selection

The disk of the LMC is rich in bubbles, shells, arcs, and filaments, and numerous references to shells and supershells are present in the literature, identified in a variety of observational tracers (e.g., Davies et al. 1976; Meaburn 1980; Chu & Mac Low 1990; Kim et al. 1999, hereafter KDSB99). However, in general there is no one-to-one correspondence between different studies, with different tracers and methods favoring different classes of objects. A study on LMC shells must therefore give careful thought to its choice of sample.

The most comprehensive census of shells in the LMC disk is provided by the H I 21 cm line, which probes the structure and dynamics of the atomic ISM. Supershells remain detectable in H I long after their central energy sources have switched off, and objects defined in H I should in theory comprise the most complete sample of shells and shell-like structures in the galaxy. The largest and most up-to-date catalog of H I supershells in the LMC was compiled by KDSB99. They define shells as coherent, bright-rimmed voids that are present in multiple velocity channels, and identify a total of 126 objects ranging in radius from ~ 50 to ~ 700 pc.

In this work we consider only the “supergiant shells” (SGSs) of KDSB99—defined as those with radii greater than the scale height of the LMC gas disk ($z_g \sim 180$ pc). Book et al. (2008) compare H I and new H α data to examine in detail the SGSs from KDSB99 and the nine similar objects from the classic H α catalog of Meaburn (1980). Their analysis, with which we concur, ultimately rejects several SGSs as false detections, and refines the positions, velocities, and extents of

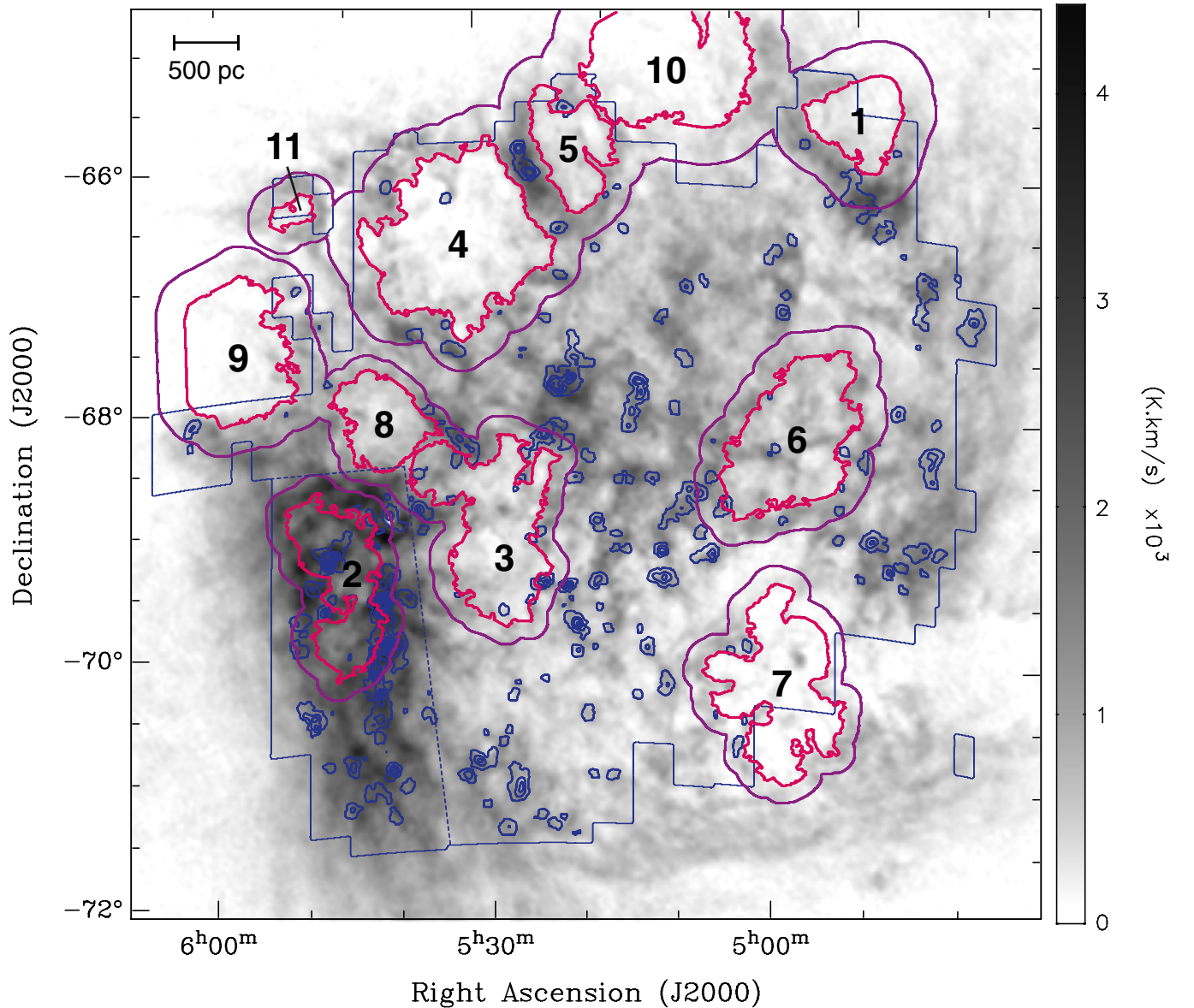


Figure 1. Supergiant shells and shell complexes overlaid on integrated intensity map of the LMC. The grayscale image is H I integrated over the velocity range $175 < v_{\text{LSR}} < 375 \text{ km s}^{-1}$ and smoothed to a resolution of 2.6. Blue contours are $^{12}\text{CO}(J = 1-0)$ integrated intensity, processed as described in Section 2.2, and integrated over the velocity range $200 < v_{\text{LSR}} < 305 \text{ km s}^{-1}$. (Both images contain all emission detected in each tracer in the LMC). Contours start at 0.65 K km s^{-1} and are incremented every 2.5 K km s^{-1} . The solid blue line marks the boundary of the region observed in CO. Dark pink lines trace the inner rims of the shell complexes and purple lines mark their outer boundaries, as described in Section 3.2. Each shell complex is numbered and its constituent members listed in Table 2. Dotted blue lines enclose the region known as the southeastern H I overdensity (SEHO).

(A color version of this figure is available in the online journal.)

some others. Our final sample of supergiant shells is based on this revised selection, and contains 19/23 of the original KDSB99 catalog. These are organized into 11 spatially distinct complexes (see Section 3.2), which between them occupy $\sim 40\%$ of the area of the main H I disk. These complexes are shown in Figure 1 and are listed, along with their constituent shells, in Table 1.

There are a number of reasons—both scientific and pragmatic—for working only with supergiant shells and excluding smaller objects. SGSs are a physically meaningful population of the largest and most energetic shells in the LMC, and are therefore expected to have the most dramatic effect on the ISM. Their regions of influence are large, giving them ample opportunity to accumulate the large quantities of material needed

for molecular cloud formation. They are also well resolved at the resolution of the CO datacube, and far larger than a typical giant molecular cloud (GMC). This avoids ambiguity in the association of molecular gas with any given shell, and also avoids small-number problems that might arise from the association of only a few CO pixels with smaller objects. In addition, small/young supershells are expected to retain a correlation with the star-forming cloud complexes that birthed them, leading to difficulties in separating correlation and causality when interpreting their molecular gas fractions. SGSs, on the other hand, should be free of this bias, since their large size and advanced evolutionary state means that they have expanded far beyond their initial birth sites. In addition, SGSs are well studied, and multi-wavelength data exist for most objects, meaning that there

Table 1
SGS Complexes and Thresholding Parameters

SGS Complex	Previous Listings		Thresholding Parameters ^c				Shell ^c (')	$v_{\text{exp}}^{\text{b,g}}$
	H α^a	H I ^b	α^d (J2000)	δ^d (J2000)	$v_{\text{LSR}} \text{ range}^e$ (km s ⁻¹)	T_b^f (K)	Thickness	(km s ⁻¹)
1	LMC1	SGS3	04 59 00	-65 40 00	270–285	15	17	15
2	LMC2	SGS20	05 42 45	-69 55 00	220–230	35	9	25
	LMC2	SGS19	05 44 45	-69 14 00	260–270	30		25
3	LMC3	SGS8/12/13	05 28 30	-69 17 00	250–265	20	9	23/25
	LMC3	SGS15	05 34 00	-68 44 00	265–275	20		24
4	LMC4	SGS11/14	05 31 45	-66 50 00	275–300	15	15	36
5	LMC5	SGS7	05 31 45	-66 50 00	285–305	20	14	25/30
6	LMC6	SGS2	04 59 15	-68 40 00	250–270	15	13	17/20
	...	SGS5	05 02 30	-68 25 00	265–285	15		20
7	LMC8	SGS4	05 01 00	-70 27 00	220–240	10	9	23/15
8	...	SGS16/17/22	05 39 00	-68 18 00	275–280	20	7	18/26/ ^h
9	...	SGS23	05 51 30	-67 37 00	275–285	10	15	23
10	...	SGS6	05 14 30	-65 20 00	280–290	10	19	18
11	...	SGS21	05 45 00	-66 30 00	280–290	20	13	19

Notes.

^a Meaburn (1980).

^b Kim et al. (1999).

^c See Section 3.2.

^d Approximate center position of thresholded void.

^e Velocity range over which emission is averaged prior to thresholding.

^f Threshold intensity level.

^g Book et al. (2008).

^h Staveley-Smith et al. (2003).

is minimal ambiguity in their identification or origin. The same is not true of smaller H I shells, many of which are likely less robust detections. For these reasons we restrict ourselves to exploring the influence of the largest and most obvious objects in the present work. However, we discuss the implications of excluding smaller shells in Section 5.1.

Simulations demonstrate that it is possible to form giant dense-rimmed voids by gravity, turbulence, and thermal instabilities alone, even without the inclusion of stellar feedback (e.g., Wada et al. 2000; Dib & Burkert 2005; Dobbs et al. 2011). However, there is good evidence to suggest that the selected SGSs are genuine stellar feedback shells. Expansion is a strong signature of formation via a central energy source, and is confirmed in all of the constituent members of the eleven SGS complexes, in the form of H I emission at velocities positive or negative of the systemic velocity (Kim et al. 1999; Staveley-Smith et al. 2003; Book et al. 2008; see Table 1). *ROSAT* observations by Points et al. (2001) find diffuse X-ray emission in six of the eleven complexes in our sample, interpreted as hot gas produced by stellar winds and supernova blasts. The exceptions are Complexes 6, 7, 9, 10, and 11. Of these, only Complex 6 was observed in their study; however, Bomans et al. (1996) do claim a detection for part of this complex in the same *ROSAT* bands, so the literature is ambiguous. For Complex 7, Chu & Gruendl (2011) claim that extended gamma-ray emission in the direction of the shell arises from cosmic-ray acceleration in supernova remnant shocks, and young clusters close to the edges of the shell (Glatt et al. 2010) are also directly implicated in expansion in its NE lobes (Book et al. 2008). Known clusters are similarly implicated in the dynamics of Complexes 1, 2, 3, and 4 (Book et al. 2008; Kawamura et al. 2009; Glatt et al. 2010). Of these, Complexes 2 and 4 bear special mention as objects for which a large body of research stretching back several decades makes a particularly robust and comprehensive case

for a stellar origin (see e.g., Caulet et al. 1982; Dopita et al. 1985; Bomans et al. 1994; Points et al. 1999). Little information exists on Complexes 10 and 11. However, these objects cover very small areas in the observed region, and their impact on the results of this work is minimal (see also Section 4.2). It should be noted here that H α emission from shell walls is not a reliable indicator of a stellar origin, although it is sometimes treated as such. As pointed out by Book et al. (2008), the ionizing radiation in H α -bright SGSs frequently arises from young sources within shell walls and not from a central parent cluster. Similarly, an H α -dark shell is one in which no recent ($\lesssim 12$ Myr) star formation has occurred, but not one whose origins were necessarily non-stellar.

3.2. Supergiant Shell Definition

This work compares volumes affected by supergiant shells with volumes that are not, using two-dimensional (2D) velocity-integrated intensity maps summed over the full velocity range of the LMC. This 2D approach is well justified in the case of supergiant shells. Because SGSs are by definition larger than the H I scale height of the LMC (KDSB99), they are assumed to have propagated through the full vertical extent of the gaseous disk to blow out on both sides of the plane. An SGS is therefore conceived as a cylindrical section of disk, all emission above and below of which is also related to the shell system. This mitigates the problems of line-of-sight contamination and shell curvature that would severely affect smaller objects. Emission at all velocities within the spatial extent of an SGS may therefore be assumed to be related to it. (The inclination of the LMC causes departures from this assumption, which we discuss below in Section 3.4)

The shapes and extents of SGS regions are defined using a thresholding method, from which pixel masks are then generated that include the entirety of the bright shells and their evacuated

voids. This method makes no ad hoc assumptions about the morphology of a shell, instead allowing the configuration of the ISM to define its boundaries. SGSs are seen as rim-brightened voids in H I, and are most clearly discerned at their systemic velocities. The following steps are performed to define individual SGSs and overlapping complexes:

1. A narrow-velocity H I mean intensity map is produced by averaging the H I brightness over the central few velocity channels of a supergiant shell, where the exact velocity range is chosen to include the entire bright rim of the shell over its full spatial extent ($\sim 10\text{--}20 \text{ km s}^{-1}$).
2. A contour is plotted at a level that picks out the shell's inner rim. Because H I brightnesses in the LMC vary with both location and velocity, there is no "one size fits all" threshold level. The choice of threshold is made by eye, and is typically approximately half of the mean brightness of the shell walls. Since the analysis in this work is insensitive to the exact positioning of the inner rim, this approach is acceptable. Similarly, since many shells are not completely enclosed rings, it is sometimes necessary to "fill in the gaps" in this rim by hand. Such gaps are usually small, and human judgment does not strongly influence the final size or shape.
3. All pixels within this inner rim are masked, and the masks for all shells are then combined. At this stage, overlapping objects are amalgamated into single complexes.

Because many structures designated as SGSs by KDSB99 are either located completely within the spatial boundaries of larger shells, or are well connected to them in both space and velocity, it is not necessary to perform the above thresholding steps for every individual object in the KDSB99 catalog. Where listed SGSs overlap significantly in both space and velocity, a single thresholding step at the appropriate velocity range recovers all separately cataloged features. Where there is full spatial overlap there is no need to threshold the smaller SGSs at all, since they occupy no unique pixels outside of their larger counterparts. Table 1 lists the approximate central positions, velocity ranges, and threshold intensities used to generate the final SGS complexes.

At this stage the masks are imposed on the 2D H I integrated intensity map, and contours are drawn at intervals of $2'$ incrementing both inward and outward from the rim of each shell complex. The H I emission between each pair of contours is then summed to produce a plot of mean surface density versus distance from the complex rim. Example plots for Complexes 1 and 4 are shown in Figure 2. Low-intensity voids and high-intensity walls are clearly seen, demonstrating how SGSs are a dominant component of LMC disk structure, even when emission is fully integrated in velocity. The outer edge of the wall is defined as the distance at which the mean H I surface density has fallen to the first minimum, or in cases where the emission falls off smoothly with no subsequent rise (3/11 complexes), as the distance at which the mean surface density has decreased by half of the difference between the peak and the inner rim. It should be noted that the presence of a second peak outside the shell wall depends on the configuration of the surrounding ISM, and there are no differences observed in the properties of the SGS systems with and without this feature. The mask for each shell complex is then grown by this thickness. Thus, the final set of masks cover both the bright shells and evacuated voids of the LMC supergiant shells. The locations and outlines of the final SGS complexes are shown in Figure 1.

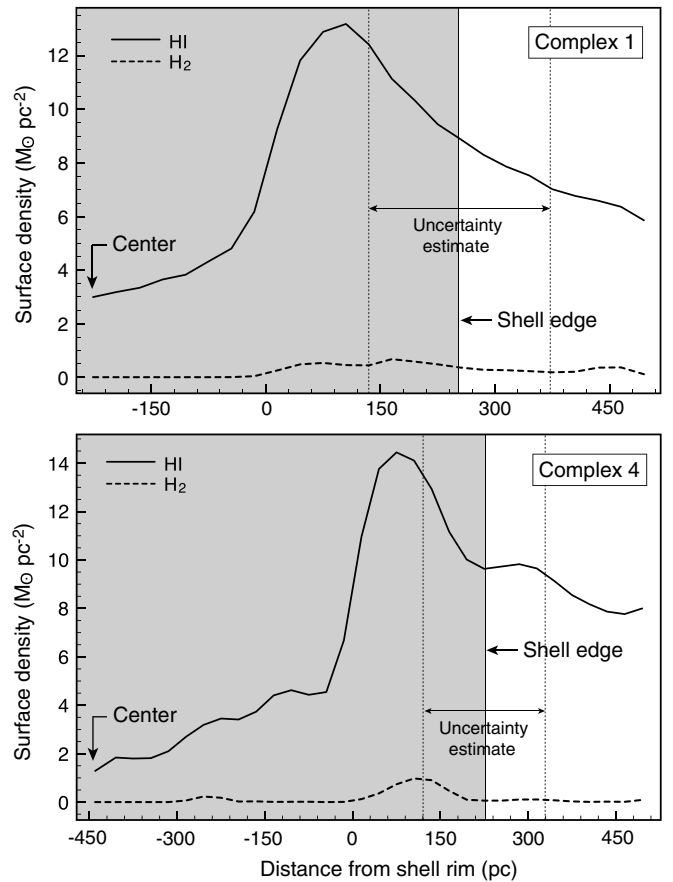


Figure 2. Example of the definition of shell thickness for two SGS Complexes. The solid and dashed lines show variation of H I and H₂ surface density with distance from the shell inner rim, calculated by summing emission within $2'$ bands incremented inward and outward from the thresholded inner rim of the SGS complexes. Units are $M_{\odot} \text{ pc}^{-2}$ with masses derived as described in Section 3.3. The bright rim and evacuated void configurations can be clearly seen. Emission within the gray regions are defined as the SGS zones, whose edges is defined as described in Section 3.2. Uncertainties are estimated as $\pm 50\%$ of the shell thickness, and are marked with dotted lines. H₂ is included here for illustration, but is not used in defining the shells.

3.3. The Metric: Molecular Fraction in SGS and "Background" Zones

The ISM in the volumes occupied by supergiant shells is compared to that outside them, to seek for evidence of molecular cloud formation in shell walls. We aim to answer the question of whether the passage of an SGS through the ISM causes the production of more H₂ than would have been created if no SGS had been present. The underlying assumption is that if the net effect of a supergiant shell is to produce more molecular matter in its swept-up walls than is destroyed by its initial passage through the ISM, then the volumes now occupied by SGSs should be more molecular than they were prior to the occurrence of the shell. The appropriate region over which to measure the molecular fraction is therefore the entire volume affected by a supergiant shell, including both the overdense walls and the underdense void (which in a 2D analysis will also contain emission from the front and back limbs of a shell). Selecting shell rims alone would preferentially sample only the highest H I column densities, and would not probe the effect of SGSs on the full volumes of space that they influence.

In the absence of information on the ISM at past epochs, a comparison is made between SGSs and "background"

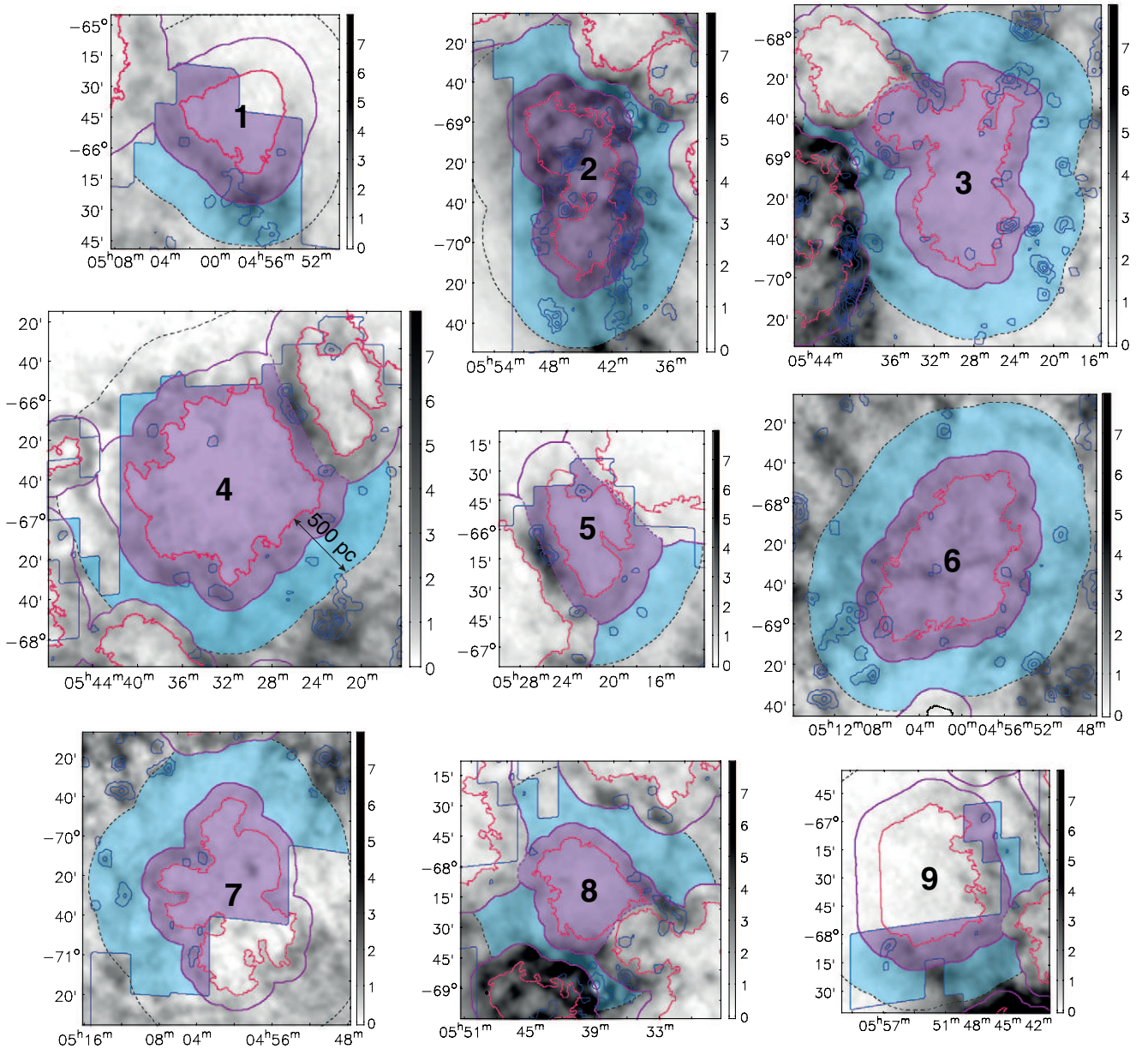


Figure 3. SGS complexes and their local background zones, defined as described in Section 3.3. Filled purple areas show the SGS zones and filled blue areas bordered by dashed lines shows the maximum widths of the local background zones (see Section 4.2). Spatial axes are right ascension and declination, and the color scale is in column density units of 10^{21} cm^{-2} . All other lines and colors are as in Figure 1.

(A color version of this figure is available in the online journal.)

(non-SGS) regions that serve as a proxy for the undisturbed medium. We consider two approaches. In Section 4.1 SGS volumes are compared with the rest of the LMC disk. In this case SGSs between them occupy 45% of the total observed area of the LMC, corresponding to 13.0 deg^2 (a projected area of $\sim 11 \text{ kpc}^2$), with a remaining 16.6 deg^2 ($\sim 13 \text{ kpc}^2$) designated as the background zone. In Section 4.2 they are compared individually with their local surroundings, in order to minimize the impact of galaxy-scale variations in the molecular fraction. In the latter case, background zones are defined as bands of constant thickness around each shell complex, excluding pixels that are assigned to other shells. The minimum background zone width considered is $10'$ ($\sim 150 \text{ pc}$) from the shell edge, and the maximum considered is $33'$ ($\sim 500 \text{ pc}$) from the inner rim. 500 pc represents an approximate limit at which emission

is considered “local,” roughly set by the distance at which the background zones of outer galaxy shells such as Complexes 4 and 8 begin to sample the very different environment of the dense central regions of the disk (see Section 4.1). SGS complexes are excluded from this individual analysis if either their shell or background zones do not include sufficient area in the CO datacube, defined as at least 0.25 deg^2 of coverage ($\sim 0.2 \text{ kpc}^2$) in each zone. On this basis Complexes 10 and 11 (SGS6 and SGS21) are excluded. For this object-by-object analysis, pixels that belong to the swept-up wall of more than one complex (e.g., the bright ridge between Complexes 4 and 5) are assigned to the nearer of the two. Figure 3 illustrates the SGS and maximum background zones for each complex. The surface areas occupied by SGSs and their partner background zones are given in Table 2.

Table 2
Analysis of Molecular Fractions in Individual SGS Complexes and Local Backgrounds

SGS Complex	Molecular Fraction $f_{\text{H}_2}^a/10^{-2}$		$\log(f_{\text{H}_2,\text{SGS}}/f_{\text{H}_2,\text{bg}})^d$	$\delta M_{\text{H}_2}/M_\odot^e$	Area/deg ^{2h}	
	SGS Zone ^b	Local Background ^c			SGS Zone	Local Background ^g
1	3.8 ± 0.4	4.7 ± 0.4	-0.11	-1.1×10^5	0.64–1.10	0.29–0.66
2	8.7 ± 0.2	5.6 ± 0.2	0.20 [0.13] ^f	$1.5[1.0]^f \times 10^6$	1.14–1.76	0.78–1.86 [1.95–2.56] ^f
3	6.3 ± 0.2	4.8 ± 0.4	0.12	3.0×10^5	1.62–2.45	0.89–2.60
4	3.1 ± 0.2	1.2 ± 0.2	0.44	3.6×10^5	2.28–3.40	0.58–1.31
5	5.1 ± 0.3	2.6 ± 0.6	0.32	2.7×10^5	0.78–1.36	0.25–0.44
6	2.8 ± 0.4	5.4 ± 0.3	-0.29	-5.1×10^5	1.65–2.77	0.92–2.70
7	3.0 ± 0.4	3.3 ± 0.7	-0.07	-2.2×10^4	1.05–1.51	0.57–1.65
8	1.0 ± 0.1	1.2 ± 0.4	-0.12	-2.5×10^4	0.66–1.01	0.39–0.86
9	2.8 ± 0.3	0.8 ± 0.1	0.57	1.1×10^5	0.34–0.91	0.25–0.78
10
11

Notes.

^a Molecular fraction $f_{\text{H}_2} = M_{\text{H}_2}/(M_{\text{H}_2} + M_{\text{H I}})$.

^b Value for standard shell thickness as listed in Table 1. Uncertainties obtained by varying shell thicknesses by $\pm 50\%$.

^c Mean and standard deviation obtained over full range of background zone widths, as described in Section 3.3.

^d Median values as derived in Section 4.2.

^e Estimate of H_2 mass difference due to presence of SGS. (See Section 4.2).

^f Values in square brackets obtained when remainder of SEHO used as local background for Complex 2.

^g Area for maximum width of $33'$ from SGS inner rim.

^h Maximum and minimum values within full range of SGS and background zone widths, as described in Section 3.3.

We define two quantities, $f_{\text{H}_2,\text{SGS}}$ and $f_{\text{H}_2,\text{bg}}$, where f_{H_2} is the molecular fraction of the ISM, given by

$$f_{\text{H}_2} = \frac{M_{\text{H}_2}}{M_{\text{H I}} + M_{\text{H}_2}}, \quad (1)$$

and the subscripts “SGS” and “bg” indicate measurements in supergiant shell volumes and background regions, respectively. $M_{\text{H I}}$ and M_{H_2} are the atomic and molecular hydrogen masses measured from H I and CO, and since the distance to all points in the LMC is assumed to be equal, f_{H_2} is simply related to column density as $f_{\text{H}_2} = 2N_{\text{H}_2}/(N_{\text{H I}} + 2N_{\text{H}_2})$. N_{H_2} is calculated assuming an I_{CO} to N_{H_2} conversion factor of $3.0 \times 10^{20} \text{ cm}^{-2} \text{ K}^{-1} \text{ km}^{-1} \text{ s}$ (appropriate for the LMC; Leroy et al. 2011), and $M_{\text{H I}}$ is assumed to be equal to $1.8 \times 10^{18} I_{\text{H I}}$ (Dickey & Lockman 1990), the exact result for optically thin gas.

3.4. Sources of Uncertainty

The uncertainties inherent in estimating column densities from H I and CO, and their potential effects on the observed relationship between $N_{\text{H I}}$ and N_{H_2} in the LMC, have been discussed extensively by Wong et al. (2009, hereafter W09). For H I the assumption of an optically thin gas will provide an underestimate of $N_{\text{H I}}$ by a factor of $\tau/[1 - e^{-\tau}]$, with absorption studies toward background continuum sources suggesting that this factor reaches a value of ~ 2.0 toward the most opaque LMC sight lines (Dickey et al. 1994; Marx-Zimmer et al. 2000). For CO, a number of factors may affect the accuracy of the N_{H_2} conversion, particularly on the scales of individual clouds (e.g., Shetty et al. 2011a, 2011b; Genzel et al. 2012; Glover & Clark 2012). These uncertainties are difficult to quantify. However, their impact on f_{H_2} is mitigated when summing over large regions of space, as we do here.

The assumption that all emission along the line of sight to an SGS is genuinely part of the shell system implicitly assumes a face-on galaxy. For an inclination angle of $i \sim 35^\circ$ (van der

Marel & Cioni 2001) and an exponential H I disk with a scale height of ~ 180 pc (KDSB99; Padoan et al. 2001), $\sim 50\%$ of the H I mass is contained in a layer ~ 250 pc thick. A given line of sight through the LMC therefore contains emission that is spread over a projected distance of $\sim 250 \tan i \approx 175$ pc in the plane of the galaxy, translating to an in-plane positional uncertainty of ± 87 pc. This will not strongly affect the shapes of the SGSs themselves. The thresholded inner rims identified in Section 3.2 reflect a real structural property of the ISM—the void/rim configuration that is the signature of a swept-up shell. Where problems may arise is in the assigning of emission to either an SGS or background zone, with the spreading of emission within the plane along a given sight line inevitably resulting in some emission being falsely assigned. This is not an effect that can be adequately expressed as an uncertainty on the defined shell thickness, nor can it be well modeled even by considering the third dimension of velocity. (Even on the steepest parts of the rotation curve $\delta R = 90$ pc translates to a rotational velocity difference of only $\lesssim 3 \text{ km s}^{-1}$; Kim et al. 1998; van der Marel et al. 2002; Olsen & Massey 2007.) It is a fundamental limitation of an inclined system that cannot be corrected for without knowledge of the 3D configuration of the gas. Fortunately, the molecular fraction in SGSs and their background zones is most sensitive to the placement of the scattered concentrations of CO, whose positional uncertainty is expected to be less severe. While the vertical distribution of molecular gas in the LMC is not known, CO scale heights are typically between two and several times smaller than H I, both in the Milky Way (e.g., Dickey & Lockman 1990; Malhotra 1994; Stark & Lee 2005) and elsewhere (e.g., Sancisi & Allen 1979; Scoville et al. 1993). For an exponential CO scale height of ~ 90 pc, the projected in-plane positional uncertainty on CO clouds is only $\sim \pm 43$ pc—approximately one resolution element. It is also worth noting that some estimates place the characteristic thickness of the LMC gaseous disk even smaller, at ~ 100 pc for the H I layer (Elmegreen et al. 2001), which would further reduce this uncertainty.

Our shell definition method relies on judging the end point of the increase in brightness associated with a SGS wall in the 2D image. Uncertainties associated with this step may be roughly quantified by a simple error estimate on the shell widths. This is implemented in the analysis in Sections 4.1 and 4.2, by varying the defined thickness of each shell by $\pm 50\%$ of its nominal value. A related concern is shell “leakage.” In a highly structured ISM, wind and supernova feedback may leak beyond the edges of a dense shell and out into the surrounding medium (e.g., Chen et al. 2000; Walch et al. 2012). However, this is not likely to be a major issue in the present work. We are concerned with identifying regions where the ISM has been swept-up into dense structures by large-scale stellar feedback. Our method of defining SGSs directly recovers this behavior, by returning the edges of dense walls, making no ad hoc assumptions about the morphology of a shell. If there is material flowing through breaks in shell walls, it will either be sufficiently energetic (and/or sufficiently confined) to excavate a new dense-walled cavity, or it will dissipate without strongly affecting the configuration of the neutral ISM. In the former case our method will accurately account for it, provided the new cavity is well joined to the original shell. Indeed, this kind of phenomenon can be seen in the case of Complex 7, which has several lobes extending from the main body of the SGS. Conversely, if the outflow is unable to influence the neutral gas sufficiently to form a void/wall configuration then its influence on the molecular cloud formation process is almost certainly negligible, and we are unconcerned with it in this work. We are therefore confident that our shell definition method recovers the relevant material for our analysis.

The presence of smaller shells within the defined SGS and background zones may also potentially affect the analysis. If such shells significantly affect the molecular gas fraction, then a systematic overabundance of these objects in either SGS or background zones would bias our result. Figure 4 overplots the H I supershells of KDSB99 on a map of the SGS and local background zones, with H II regions identified in the literature as superbubbles also plotted. While it is possible that some of these H I objects are not genuine feedback structures, they nevertheless provide a rough estimate of the distribution and abundance of smaller shells in the LMC disk. These shells cover very similar fractions of the total surface areas of the SGS and background zones. Small shells occupy 0.19 ± 0.01 of the SGS zones, 0.18 ± 0.01 of the remainder of the LMC disk, and 0.17 ± 0.01 of the aggregate local background zones, where the uncertainties reflect the values over the full range of shell and background zone widths used in the analysis. This suggests that to the first order, smaller shells may be assumed to contribute approximately equally to f_{H_2} in both SGS and background zones. Their presence is therefore unlikely to cause significant bias in the measurement of the effect of SGSs on the molecular fraction. The decision not to explicitly include smaller shells in the analysis does impact on the wider astrophysical interpretation of our results, however, which we discuss in Section 5.1.

Finally, the simple method of defining local background zones may lead to a possible systematic bias in the analysis of individual shells. Many SGS complexes are located in the outer regions of the disk. However, NANTEN CO coverage is limited at large galactocentric radii, affecting our ability to define background zones on all sides. As a result, background zones tend to preferentially sample material at smaller radii than their paired SGS zones. Since there is generally very little CO in

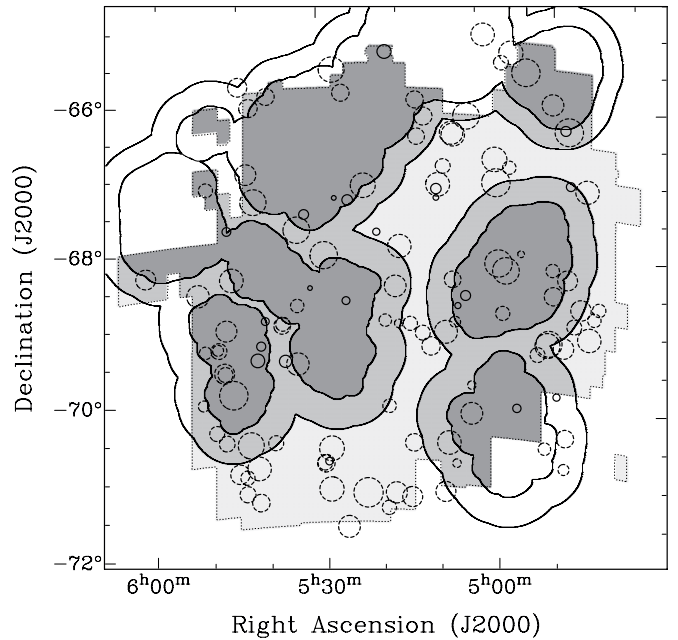


Figure 4. Placement of smaller LMC supershells relative to SGSs and background zones. Dashed circles are the H I “giant shells” of Kim et al. (1999). Solid circles are H II regions that have been identified as superbubbles in the literature (Chu et al. 1995; Oey 1996; Dunne et al. 2001). Shaded dark gray areas show the SGS zones used in the analysis, with shell widths defined as in Table 1. Shaded medium gray areas mark the maximum extent of the local background zones used in Section 4.2. The global background used in Section 4.1 corresponds to the shaded light gray and shaded medium gray zones. The thin dotted line marks the boundary of the region observed in CO.

the outer regions of galaxy disks (whereas H I remains strongly detectable, e.g., Wong & Blitz 2002), such an effect (if present) would result in values of $f_{\text{H}_2, \text{bg}}$ that are erroneously high, biasing the analysis against a positive result.

4. RESULTS

4.1. Global Molecular Gas Fraction

We sum the H I and CO emission within all SGS zones to derive a global molecular fraction for supergiant shells, and compare this to the global molecular fraction in the rest of the LMC disk. We find that the total molecular fraction in the regions occupied by SGSs is $f_{\text{H}_2, \text{SGS}} = 0.054 \pm 0.004$. The equivalent quantity for the remainder of the observed area is $f_{\text{H}_2, \text{bg}} = 0.055 \pm 0.002$. Here, uncertainties are estimated by varying the shell boundaries by $\pm 50\%$ of the defined thicknesses, as given in Table 1.

The majority of the molecular gas in the LMC is located in one of two large regions in which f_{H_2} is enhanced with respect to the global average, and whose origins appear to be related to the global structure of the LMC disk. The closeness of $f_{\text{H}_2, \text{SGS}}$ and $f_{\text{H}_2, \text{bg}}$ is in fact somewhat serendipitous, arising from the fact that these regions of high molecular fraction are (by apparent coincidence) equally represented in both SGS and background zones. The first of these CO-rich zones is the bright ridge-like feature sometimes known as the southeastern H I overdensity (SEHO), which extends for ~ 3 kpc along the southeastern edge of the disk. This region is subject to tidal forces (e.g., Staveley-Smith et al. 2003) and ram-pressure effects from the LMC’s passage through the Milky Way Halo (de Boer et al. 1998), and hosts $\sim 1/3$ of the total molecular mass in the LMC. The SEHO is heavily sampled by SGS Complex 2. The second is

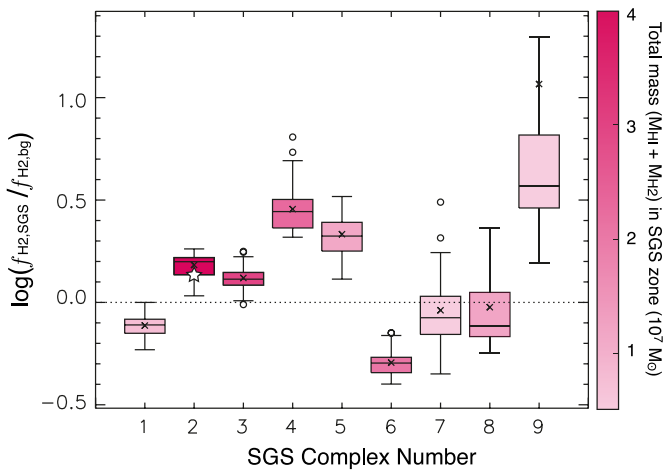


Figure 5. Box plot of $\log(f_{\text{H}_2,\text{SGS}}/f_{\text{H}_2,\text{bg}})$ for individual SGS complexes and their local background zones. Each box illustrates the distribution of values obtained for a grid of background zones and shell widths, as described in Section 4.2. The central lines show the median values, the upper and lower bounds of the boxes show the upper and lower quartiles, and the whiskers extend out to the maximum and minimum values of the data, or to the 1.5 interquartile range if there are data beyond this range. Means are plotted as crosses and outliers as circles. Complex 9 contains extremely high outliers arising from combinations where background zones contain almost no detected CO; these lie outside the vertical range of this plot and are not marked. Each complex is color-coded by the total mass, $M_{\text{H}_1} + M_{\text{H}_2}$, contained in the SGS zone. The dotted line at $\log(f_{\text{H}_2,\text{SGS}}/f_{\text{H}_2,\text{bg}}) = 0$ marks the point at which the molecular fractions in the SGS and background zones are equal. The filled star marks the value obtained for Complex 2 (LMC2) when using the rest of the SEHO as the background zone (see the text).

(A color version of this figure is available in the online journal.)

the central portion of the disk, where large-scale gravitational instability (Yang et al. 2007) and disk perturbations (Dottori et al. 1996) arising from the influence of the old stellar bar likely combine to produce high gas densities. The arrangement of the supergiant shells is such that both shell and background zones sample approximately equal fractions of these high f_{H_2} regions, with the contribution of Complex 2, which includes most of the SEHO, offset by the lack of SGSs in the central disk. The mean H I column density is also enhanced in these two regions, in keeping with the results of W09, who find that the probability of a CO detection increases with increasing $N_{\text{H I}}$.

This implies that SGSs are not the dominant driver of molecular gas production in the LMC; the global structure of the disk is a better determinant of where molecular matter is formed. Nevertheless, it may be that SGSs make some small contribution to molecular cloud formation, which can be recovered by comparison with background zones local to the shells.

4.2. Molecular Gas Fractions for Individual Shell Complexes

The impact of unrelated global variations in f_{H_2} can be minimized by defining background zones locally, so that each SGS is paired with a background zone that only contains material in its immediate vicinity. This kind of comparison has already been carried out successfully for selected objects in the Milky Way (Dawson et al. 2011b).

Local background zones are defined as described in Section 3.3 and shown in Figure 3. The molecular fraction in each individual SGS is calculated and compared with that in its paired background zone. To quantify sensitivity to the choice of region, $f_{\text{H}_2,\text{SGS}}$ and $f_{\text{H}_2,\text{bg}}$ are computed for a grid of shell and background zone widths. As for the global case, shell boundaries are varied by $\pm 50\%$ of the defined thicknesses, as given in

Table 3
Total H I and H₂ Masses in Various Regions of the LMC

	$M_{\text{H I}}/M_{\odot}$	M_{H_2}/M_{\odot}
Whole LMC, where CO observed	$3.0(2.1)^b \times 10^8$	$1.7(1.1)^b \times 10^7$
SGS complexes, where CO observed	$1.2(0.8)^b \times 10^8$	$7.0(3.3)^b \times 10^6$
Estimated mass created due to SGSs ^a	...	$1.8[1.4]^c(0.4)^b \times 10^6$

Notes.

^a See Section 4.2.

^b Values in round brackets obtained when SEHO completely excluded from analysis.

^c Value in square brackets obtained when remainder of SEHO used as local background for Complex 2.

Table 1. Background zone widths are varied between the limits described in Section 3.3 (beginning at 10' from the shell edge and ending at 33' from the inner rim). Both shell and background zones are incremented in 2' intervals.

Figure 5 shows a box plot of $\log(f_{\text{H}_2,\text{SGS}}/f_{\text{H}_2,\text{bg}})$ for each SGS complex, showing the maximum and minimum values, the lower and upper quartiles, and the mean and median results obtained over the full grid of shell and background sizes. We find that of the nine complexes, five show strong evidence for increased molecular fraction in the SGS volumes (Complexes 2, 3, 4, 5, and 9), two show good evidence of a decrease (Complexes 1 and 6) and two show no significant difference to within the 1σ uncertainties (Complexes 7 and 8). The median values of $\log(f_{\text{H}_2,\text{SGS}}/f_{\text{H}_2,\text{bg}})$ range from -0.29 to 0.57 , and are listed in Table 2. Those complexes showing an apparent enhancement contain $\sim 70\%$ of the total mass in the sample. In this context it is interesting to note that the complex with the strongest apparent decrease (Complex 6) is dominated by one of the least robust SGS detections in the sample (see Section 3.1).

These numbers may be used to obtain a crude estimate of the contribution made by SGSs to the formation of molecular gas in the LMC. We compute the difference between the measured M_{H_2} in each SGS complex and an “expected” value derived from the median value of $f_{\text{H}_2,\text{bg}}$ —assumed to represent the molecular fraction that would have been measured if no SGS had been present in the volume. The results for each complex are given in Table 2. In the case of Complex 2, an alternative approach is to use the remainder of the SEHO as the background zone, since there is evidence that the relationship between $N_{\text{H I}}$ and f_{H_2} there may be different from the rest of the galaxy. This does not substantially change the results, but provides a slightly higher estimate of $f_{\text{H}_2,\text{bg}}$ (listed in the table and also marked in Figure 5). Table 3 shows the total H I and H₂ masses in the entire LMC disk (within the CO observed region), within SGS complexes, and the total mass estimated to have been created due to the influence of SGSs. Summing over the entire sample of shells, this estimate suggests that $\sim 25\%$ of the molecular matter in SGS complexes may have been formed as a result of the stellar feedback that formed the shells. This is equivalent to $\sim 11\%$ of the total molecular mass of the LMC. These figures fall to $\sim 14\%$ and $\sim 8\%$ when the background zone for Complex 2 is defined as the remainder of the SEHO. Although it is the contribution from Complex 2 that dominates these numbers, we note that a positive result ($\sim 12\%$ of the CO in SGSs, corresponding to $\sim 4\%$ of the total molecular mass in the disk) is still found when the SEHO is completely excluded from the analysis.

We stress that these are crude estimates. Nevertheless, the results suggest that the formation of supergiant shells has a measurable positive effect on the molecular fraction of the

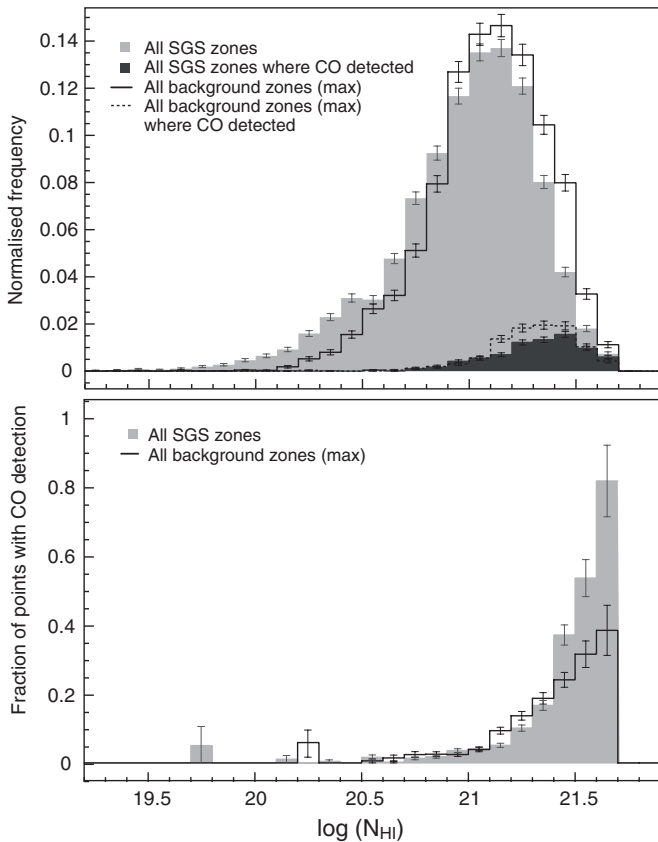


Figure 6. Upper panel: N_{HI} histograms for the aggregate of SGS zones (light gray) and the aggregate of their local background zones (black line), excluding the SEHO. Dark shading and dotted lines show the distribution of pixels for which CO was detected in the SGS zones and background zones, respectively. The results displayed here use the maximum background zone width (see Section 4.2), but the basic features of the distribution remain unchanged over the full range of widths tested. Lower panel: CO detection fraction histograms for aggregate of SGS zones (light gray) and the aggregate of their local background zones (black line), excluding the SEHO. Error bars are the scaled $1/\sqrt{N}$ counting errors.

LMC, albeit one that may be small compared to other drivers of molecular gas production in the galaxy. These numbers are also best considered as lower limits, as we will discuss below (Section 5.1).

4.3. CO Detection Fraction in Supergiant Shells

W09 find that the probability of detecting CO at any given position in the LMC disk increases with increasing N_{HI} (although it never reaches unity), and that where CO is present there is also a weak positive correlation between N_{HI} and N_{H_2} . Given this, the enhanced f_{H_2} in SGS zones might be expected to arise from a tendency for them to possess a higher fraction of pixels at the largest H I column densities. However, this does not appear to be the case. The top panel of Figure 6 shows H I column density histograms for the SGS and local background zones (aggregated). The SEHO has been excluded, since the relationship between CO and H I there is different from the rest of the disk (W09). The shells show a low column density tail corresponding to their evacuated voids, and their overall N_{HI} distribution is in fact skewed toward slightly lower values than the aggregate backgrounds. The figure illustrates the results for the largest background zones used in the analysis, but the key features of the distribution are insensitive to the choice of background zone width. The result is also not strongly driven by any particular

complex and holds true on individual scales for all SGS and background zone pairs, with the exception of Complex 5.

Instead, the SGS volumes show an enhanced CO detection fraction at high N_{HI} . The lower panel of Figure 6 shows the CO detection fraction as a function of H I column density for the same aggregate SGS and background zones. The CO detection threshold for both samples is similar, at $\sim 5 \times 10^{20} \text{ cm}^{-2}$. However, the SGS zones show a significantly enhanced likelihood of CO detection for $N_{\text{HI}} > 3 \times 10^{21} \text{ cm}^{-2}$. This behavior is mostly driven by several bright CO/H I features in the dense walls of Complexes 3, 4, and 5—three of the five objects showing individually enhanced molecular fractions. Similarly, the lower detection fractions observed at high N_{HI} in the aggregate backgrounds are driven by a few patches of bright H I with no CO. The small number of regions driving this trend, and the large scatter observed generally in the CO–H I relationships throughout the LMC, urges caution in interpretation of this behavior. Nevertheless, it does suggest that the simple explanation of SGSs possessing higher H I column densities and therefore more molecular gas does not satisfactorily explain the enhanced f_{H_2} in supergiant shells.

5. DISCUSSION

5.1. The Role of Stellar Feedback in Molecular Cloud Formation

It has been proposed that while the feedback from massive stars plays a role in structuring the disk ISM (e.g., de Avillez & Berry 2001; Joung et al. 2009; Dobbs et al. 2011; Hill et al. 2012), and is likely responsible for triggering a significant fraction of observed star formation on local scales (e.g., Boss 1995; Yamaguchi et al. 1999; Hosokawa & Inutsuka 2006; Dale et al. 2007; Leão et al. 2009; Deharveng et al. 2010), the initial production of dense (molecular) clumps and clouds on galactic scales is driven mainly by a combination of global gravitational instability and turbulence (e.g., Wada & Norman 2001; Elmegreen 2002; Tasker & Tan 2009; Bounaud et al. 2010; Mac Low & Glover 2012). Our results appear broadly consistent with this picture. While supergiant shells are clearly important in structuring the LMC disk, the results above suggest that they are not the dominant driver of the formation of molecular clouds. This is inferred both from the comparison of SGS volumes with the rest of the disk—which shows that the global structure of the disk is a better determinant of where molecular matter is found—and from the comparison of SGSs with their local environment—which finds an enhancement in molecular fraction corresponding to only $\sim 4\%$ – 11% of the total molecular mass of the LMC disk.

An important caveat to the above interpretation is that the numbers derived in Section 4.2 are (approximate) lower limits to the total contribution of stellar feedback to molecular cloud formation in the LMC. This is firstly due to the decision to ignore smaller supershells, which may also be playing a role in molecular cloud formation, but whose contribution is not directly investigated in this work. Second, our analysis is limited to a current “snapshot” of the LMC. If molecular clouds were formed and dissipated within the lifetimes of the shells—as may be the case in objects formed through multiple generations of propagating star formation (e.g., Dopita et al. 1985)—then such information is unrecoverable within the present work. The lifetime of a typical GMC in the LMC is roughly estimated by Kawamura et al. (2009) to be 20–30 Myr. Dynamical age estimates place most LMC supergiant shells at ages of

$t \lesssim 10$ Myr (Kim et al. 1999), although such estimates are necessarily crude. Estimates based on stellar population studies in individual SGSs point to somewhat older ages, typically 10–20 Myr (e.g., Dopita et al. 1985; Points et al. 1999; Glatt et al. 2010). Thus the typical evolutionary timescales of SGSs do not exceed the lifetime of a typical GMC, and it seems unlikely that multiple generations of molecular clouds will form and die within the lifetime of a supergiant shell. However, if indeed GMC lifetimes are ~ 1.5 times longer than the observable lifetime of an SGS, then clouds formed in shell walls will remain even after their parent shells have disappeared. Such clouds could fall in background zones, despite being feedback-formed. This would bias our measurement toward erroneously low values for the fraction of molecular matter formed by SGS activity.

5.2. Final Comments: Dense Gas Tracers and Galaxy Types

The quantity we have sought in this work is the fraction of the raw material for star formation that is produced in SGSs. At present, observational limitations mean that we are restricted to ^{12}CO as a tracer, which cannot distinguish between diffuse molecular gas (that may be quiescent), and the very dense material that is directly implicated in star formation. While some studies have examined higher density tracers (e.g., Johansson et al. 1994; Chin et al. 1997; Wong et al. 2006; Wang et al. 2009), these have so far been restricted to a small number of objects. However, future observations will be able to target higher density gas tracers more widely, to directly probe the material that is most tightly correlated with the star formation rate (see Lada et al. 2010, 2012, and references within). Seale et al. (2012) have recently reported spatially resolved observations of several LMC star-forming GMCs in the high-density tracers HCN and HCO^+ . It will be interesting to see how the enhancement in f_{H_2} in supergiant shells is affected when only the densest molecular gas is considered.

It will also be of interest to examine the relationship between supershells and molecular cloud formation in different classes of galaxies. The LMC is a dwarf irregular with low shear (Weidner et al. 2010), a larger H I scale height than spirals (Brinks et al. 2002) and only weak spiral structure. Low shear means shells can grow larger before they are deformed, high scale heights mean they can expand further before vertical blowout and depressurization, and the lack of a strong spiral potential mitigates against disruption by spiral arms. While Milky Way work suggests a significant quantity of molecular gas formation in two Galactic supershells (Dawson et al. 2011b), no systematic study of multiple shells has yet been performed to explore whether this behavior exists on large scales. Similarly, no quantitative comparison of CO and H I in shells in other galaxies has been made to date.

6. SUMMARY AND CONCLUSIONS

The large-scale stellar feedback from OB clusters is one of several astrophysical processes postulated to drive the formation of molecular clouds. We have used H I and $^{12}\text{CO}(J=1-0)$ data to examine the role of supergiant shells in the formation of molecular gas in the LMC, by comparing the molecular fraction, f_{H_2} , in SGS volumes to that in undisturbed “background” regions.

We have summed the H I and CO emission over all SGS volumes to derive a global molecular fraction for supergiant shells, yielding $f_{\text{H}_2, \text{SGS}} = 0.054 \pm 0.004$. This is identical

(within the errors) to the molecular fraction in the remainder of the LMC disk. This suggests that supergiant shells are not a dominant driver of molecular cloud formation in the LMC. Indeed, the global structure of the LMC disk is generally a better determinant of where the highest molecular fractions are found.

However, when the impact of galaxy-scale variations in f_{H_2} is minimized, we find that supergiant shells have a positive effect on the molecular gas fraction in the volumes of space they occupy. This is measured by comparing SGSs with their local surroundings, which are a better proxy for the undisturbed medium of individual objects. In this local analysis the majority of SGSs (five out of nine complexes, equal to $\sim 70\%$ by mass) exhibit molecular fractions that are significantly enhanced with respect to their local background regions. Averaged over the full population, our results imply that $\sim 12\%$ – 25% of the molecular mass in supergiant shell systems was formed as a direct result of their action on the ISM. This corresponds to $\sim 4\%$ – 11% of the total molecular mass of the LMC.

These figures are an approximate lower limit to the total contribution of stellar feedback to molecular cloud formation in the LMC, and constitute one of the first quantitative measurements of feedback-triggered molecular cloud formation in a galactic system. The results of this work are tentatively consistent with a scenario in which large-scale gravitational instabilities—as well as other global dynamical processes such as tidal forces and ram pressure in the southeastern regions—are responsible for the majority of dense gas formation in the LMC, with stellar feedback making an important secondary contribution. However, a detailed analysis, including smaller feedback structures and considering quantitatively the relative observable lifetimes of molecular clouds and shells, should be undertaken before this conclusion can be argued strongly.

We thank the anonymous referee, whose thorough reading of the manuscript considerably improved this work. J. Dawson thanks Simon Ellingsen, Stas Shabala, and Jamie McCallum for fruitful discussions. The Australia Telescope Compact Array and Parkes Telescopes are part of the Australia Telescope which is funded by the Commonwealth of Australia for operation as a National Facility managed by CSIRO. The NANTEN project was based on a mutual agreement between Nagoya University and the Carnegie Institute of Washington, and its operation was made possible thanks to contributions from many companies and members of the Japanese public.

REFERENCES

- Audit, E., & Hennebelle, P. 2005, *A&A*, **433**, 1
- Banerjee, R., Vázquez-Semadeni, E., Hennebelle, P., & Klessen, R. S. 2009, *MNRAS*, **398**, 1082
- Bomans, D. J., Chu, Y.-H., Magnier, E. A., & Points, S. 1996, in *Roentgenstrahlung from the Universe*, ed. H. U. Zimmermann, J. Trümper, & H. Yorke (MPE Report 263), 237
- Bomans, D. J., Dennerl, K., & Kurster, M. 1994, *A&A*, **283**, L21
- Book, L. G., Chu, Y.-H., & Gruendl, R. A. 2008, *ApJS*, **175**, 165
- Boss, A. P. 1995, *ApJ*, **439**, 224
- Bournaud, F., Elmegreen, B. G., Teyssier, R., Block, D. L., & Puerari, I. 2010, *MNRAS*, **409**, 1088
- Brinks, E., Walter, F., & Ott, J. 2002, in *ASP Conf. Ser. 275, Disks of Galaxies: Kinematics, Dynamics and Perturbations*, ed. E. Athanassoula, A. Bosma, & R. Mújica (San Francisco, CA: ASP), 57
- Carpenter, J. M., Heyer, M. H., & Snell, R. L. 2000, *ApJS*, **130**, 381
- Cault, A., Deharveng, L., Georgelin, Y. M., & Georgelin, Y. P. 1982, *A&A*, **110**, 185
- Chen, C.-H. R., Chu, Y.-H., Gruendl, R. A., & Points, S. D. 2000, *AJ*, **119**, 1317
- Chin, Y.-N., Henkel, C., Whiteoak, J. B., et al. 1997, *A&A*, **317**, 548

- Chu, Y.-H., Chang, H.-W., Su, Y.-L., & Mac Low, M.-M. 1995, *ApJ*, **450**, 157
- Chu, Y.-H., & Gruendl, R. A. 2011, *BSRSL*, **80**, 297
- Chu, Y.-H., & Mac Low, M.-M. 1990, *ApJ*, **365**, 510
- Clark, P. C., Glover, S. C. O., Klessen, R. S., & Bonnell, I. A. 2012, *MNRAS*, **424**, 2599
- Dale, J. E., & Bonnell, I. 2011, *MNRAS*, **414**, 321
- Dale, J. E., Bonnell, I. A., & Whitworth, A. P. 2007, *MNRAS*, **375**, 1291
- Dale, J. E., Ercolano, B., & Bonnell, I. A. 2012, *MNRAS*, **424**, 377
- Davies, R. D., Elliott, K. H., & Meaburn, J. 1976, *MmRAS*, **81**, 89
- Dawson, J. R., McClure-Griffiths, N. M., Dickey, J. M., & Fukui, Y. 2011a, *ApJ*, **741**, 85
- Dawson, J. R., McClure-Griffiths, N. M., Kawamura, A., et al. 2011b, *ApJ*, **728**, 127
- Dawson, J. R., Mizuno, N., Onishi, T., McClure-Griffiths, N. M., & Fukui, Y. 2008, *MNRAS*, **387**, 31
- de Avillez, M. A., & Berry, D. L. 2001, *MNRAS*, **328**, 708
- de Boer, K. S., Braun, J. M., Vallenari, A., & Mebold, U. 1998, *A&A*, **329**, L49
- Deharveng, L., Schuller, F., Anderson, L. D., et al. 2010, *A&A*, **523**, A6
- Dib, S., & Burkert, A. 2005, *ApJ*, **630**, 238
- Dickey, J. M., & Lockman, F. J. 1990, *ARA&A*, **28**, 215
- Dickey, J. M., Mebold, U., Marx, M., et al. 1994, *A&A*, **289**, 357
- Dobbs, C. L., & Bonnell, I. A. 2008, *MNRAS*, **385**, 1893
- Dobbs, C. L., Bonnell, I. A., & Pringle, J. E. 2006, *MNRAS*, **371**, 1663
- Dobbs, C. L., Burkert, A., & Pringle, J. E. 2011, *MNRAS*, **417**, 1318
- Dobbs, C. L., Pringle, J. E., & Burkert, A. 2012, *MNRAS*, **425**, 2157
- Dopita, M. A., Mathewson, D. S., & Ford, V. L. 1985, *ApJ*, **297**, 599
- Dottori, H., Bica, E., Claria, J. J., & Puerari, I. 1996, *ApJ*, **461**, 742
- Dunne, B. C., Points, S. D., & Chu, Y.-H. 2001, *ApJS*, **136**, 119
- Elmegreen, B. G. 2002, *ApJ*, **577**, 206
- Elmegreen, B. G. 2011, *ApJ*, **737**, 10
- Elmegreen, B. G., Kim, S., & Staveley-Smith, L. 2001, *ApJ*, **548**, 749
- Elmegreen, B. G., Palouš, J., & Ehlerová, S. 2002, *MNRAS*, **334**, 693
- Fukui, Y., Kawamura, A., Minamidani, T., et al. 2008, *ApJS*, **178**, 56
- Fukui, Y., Mizuno, N., Yamaguchi, R., et al. 1999a, *PASJ*, **51**, 745
- Fukui, Y., Onishi, T., Abe, R., et al. 1999b, *PASJ*, **51**, 751
- Genzel, R., Tacconi, L. J., et al. 2012, *ApJ*, **746**, 69
- Glatt, K., Grebel, E. K., & Koch, A. 2010, *A&A*, **517**, A50
- Glover, S. C. O., & Clark, P. C. 2012, *MNRAS*, **426**, 377
- Glover, S. C. O., & Mac Low, M.-M. 2007, *ApJ*, **659**, 1317
- Hartmann, L., Ballesteros-Paredes, J., & Bergin, E. A. 2001, *ApJ*, **562**, 852
- Heitsch, F., & Hartmann, L. 2008a, *ApJ*, **689**, 290
- Heitsch, F., & Hartmann, L. 2008b, *ApJ*, **689**, 290
- Heitsch, F., Hartmann, L. W., & Burkert, A. 2008, *ApJ*, **683**, 786
- Hennebelle, P., Banerjee, R., Vázquez-Semadeni, E., Klessen, R. S., & Audit, E. 2008, *A&A*, **486**, L43
- Hill, A. S., Joung, M. R., Mac Low, M.-M., et al. 2012, *ApJ*, **750**, 104
- Hosokawa, T., & Inutsuka, S.-i. 2006, *ApJ*, **646**, 240
- Inoue, T., & Inutsuka, S.-i. 2009, *ApJ*, **704**, 161
- Inoue, T., & Inutsuka, S.-i. 2012, *ApJ*, **759**, 35
- Johansson, L. E. B., Olofsson, H., Hjalmarsen, A., Gredel, R., & Black, J. H. 1994, *A&A*, **291**, 89
- Joung, M. R., Mac Low, M.-M., & Bryan, G. L. 2009, *ApJ*, **704**, 137
- Jung, J. H., Koo, B.-C., & Kang, Y.-H. 1996, *AJ*, **112**, 1625
- Kawamura, A., Mizuno, Y., Minamidani, T., et al. 2009, *ApJS*, **184**, 1
- Kim, K.-T., & Koo, B.-C. 2000, *ApJ*, **529**, 229
- Kim, S., Dopita, M. A., Staveley-Smith, L., & Bessell, M. S. 1999, *AJ*, **118**, 2797
- Kim, S., Staveley-Smith, L., Dopita, M. A., et al. 1998, *ApJ*, **503**, 674
- Kim, S., Staveley-Smith, L., Dopita, M. A., et al. 2003, *ApJS*, **148**, 473
- Kim, W.-T., & Ostriker, E. C. 2006, *ApJ*, **646**, 213
- Kim, W.-T., Ostriker, E. C., & Stone, J. M. 2002, *ApJ*, **581**, 1080
- Klein, R. I., McKee, C. F., & Colella, P. 1994, *ApJ*, **420**, 213
- Koo, B., & Heiles, C. 1988, in *IAU Colloq. 101: Supernova Remnants and the Interstellar Medium*, ed. R. S. Roger & T. L. Landecker (Cambridge: Cambridge Univ. Press), 473
- Lada, C. J., Forbrich, J., Lombardi, M., & Alves, J. F. 2012, *ApJ*, **745**, 190
- Lada, C. J., Lombardi, M., & Alves, J. F. 2010, *ApJ*, **724**, 687
- Leão, M. R. M., de Gouveia Dal Pino, E. M., Falceta-Gonçalves, D., Melioli, C., & Geraissate, F. G. 2009, *MNRAS*, **394**, 157
- Leroy, A. K., Bolatto, A., Gordon, K., et al. 2011, *ApJ*, **737**, 12
- Mac Low, M.-M., & Glover, S. C. O. 2012, *ApJ*, **746**, 135
- Mac Low, M.-M., McCray, R., & Norman, M. L. 1989, *ApJ*, **337**, 141
- Malhotra, S. 1994, *ApJ*, **433**, 687
- Marx-Zimmer, M., Herbstmeier, U., Dickey, J. M., et al. 2000, *A&A*, **354**, 787
- Matsunaga, K., Mizuno, N., Moriguchi, Y., et al. 2001, *PASJ*, **53**, 1003
- McClure-Griffiths, N. M., Dickey, J. M., Gaensler, B. M., et al. 2000, *AJ*, **119**, 2828
- McCray, R., & Kafatos, M. 1987, *ApJ*, **317**, 190
- Meaburn, J. 1980, *MNRAS*, **192**, 365
- Mizuno, N., Yamaguchi, R., Mizuno, A., et al. 2001, *PASJ*, **53**, 971
- Ntormousi, E., Burkert, A., Fierlinger, K., & Heitsch, F. 2011, *ApJ*, **731**, 13
- Oey, M. S. 1996, *ApJ*, **465**, 231
- Olsen, K. A. G., & Massey, P. 2007, *ApJL*, **656**, 61
- Padoan, P., Kim, S., Goodman, A., & Staveley-Smith, L. 2001, *ApJL*, **555**, 33
- Pittard, J. M. 2011, *MNRAS*, **411**, L41
- Points, S. D., Chu, Y. H., Kim, S., et al. 1999, *ApJ*, **518**, 298
- Points, S. D., Chu, Y.-H., Snowden, S. L., & Smith, R. C. 2001, *ApJS*, **136**, 99
- Sancisi, R., & Allen, R. J. 1979, *A&A*, **74**, 73
- Scoville, N. Z., Thakkar, D., Carlstrom, J. E., & Sargent, A. I. 1993, *ApJL*, **404**, 59
- Seale, J. P., Looney, L. W., Wong, T., et al. 2012, *ApJ*, **751**, 42
- Shetty, R., Glover, S. C., Dullemond, C. P., & Klessen, R. S. 2011a, *MNRAS*, **412**, 1686
- Shetty, R., Glover, S. C., Dullemond, C. P., et al. 2011b, *MNRAS*, **415**, 3253
- Stark, A. A., & Lee, Y. 2005, *ApJL*, **619**, 159
- Staveley-Smith, L., Kim, S., Calabretta, M. R., Haynes, R. F., & Kesteven, M. J. 2003, *MNRAS*, **339**, 87
- Tasker, E. J., & Tan, J. C. 2009, *ApJ*, **700**, 358
- van der Marel, R. P., Alves, D. R., Hardy, E., & Suntzeff, N. B. 2002, *AJ*, **124**, 2639
- van der Marel, R. P., & Cioni, M.-R. L. 2001, *AJ*, **122**, 1807
- Vázquez-Semadeni, E., Gómez, G. C., Jappsen, A. K., et al. 2007, *ApJ*, **657**, 870
- Vázquez-Semadeni, E., Ryu, D., Passot, T., González, R. F., & Gazol, A. 2006, *ApJ*, **643**, 245
- Vishniac, E. T. 1994, *ApJ*, **428**, 186
- Wada, K., & Norman, C. A. 2001, *ApJ*, **547**, 172
- Wada, K., Spaans, M., & Kim, S. 2000, *ApJ*, **540**, 797
- Walch, S., Whitworth, A. P., Bisbas, T., Wunsch, R., & Hubber, D. 2012, *MNRAS*, **427**, 625
- Wang, M., Chin, Y.-N., Henkel, C., Whiteoak, J. B., & Cunningham, M. 2009, *ApJ*, **690**, 580
- Weidner, C., Bonnell, I. A., & Zinnecker, H. 2010, *ApJ*, **724**, 1503
- Wong, T., & Blitz, L. 2002, *ApJ*, **569**, 157
- Wong, T., Hughes, A., Fukui, Y., et al. 2009, *ApJ*, **696**, 370
- Wong, T., Hughes, A., Ott, J., et al. 2011, *ApJS*, **197**, 16
- Wong, T., Whiteoak, J. B., Ott, J., Chin, Y.-n., & Cunningham, M. R. 2006, *ApJ*, **649**, 224
- Wünsch, R., Jáchym, P., Sidorin, V., et al. 2012, *A&A*, **539**, A116
- Yamaguchi, R., Mizuno, N., Onishi, T., Mizuno, A., & Fukui, Y. 2001a, *ApJL*, **553**, 185
- Yamaguchi, R., Mizuno, N., Onishi, T., Mizuno, A., & Fukui, Y. 2001b, *PASJ*, **53**, 959
- Yamaguchi, R., Saito, H., Mizuno, N., et al. 1999, *PASJ*, **51**, 791
- Yang, C.-C., Gruendl, R. A., Chu, Y.-H., Mac Low, M.-M., & Fukui, Y. 2007, *ApJ*, **671**, 374