

THIS VANISHING WORLD

A UTILITY FUEL BEEYOOO

OUR DREAM

## A grayscale photograph of a rocky, mountainous landscape. Overlaid on the image is a large, stylized, light blue text that reads "THIS VANISHING WORLD IS BEYOND OUR DREAM". The text is arranged in several lines, with some letters being significantly larger than others, creating a sense of depth and movement. The background shows rugged, snow-dusted peaks and a misty atmosphere.

THIS VANISHING WORLD

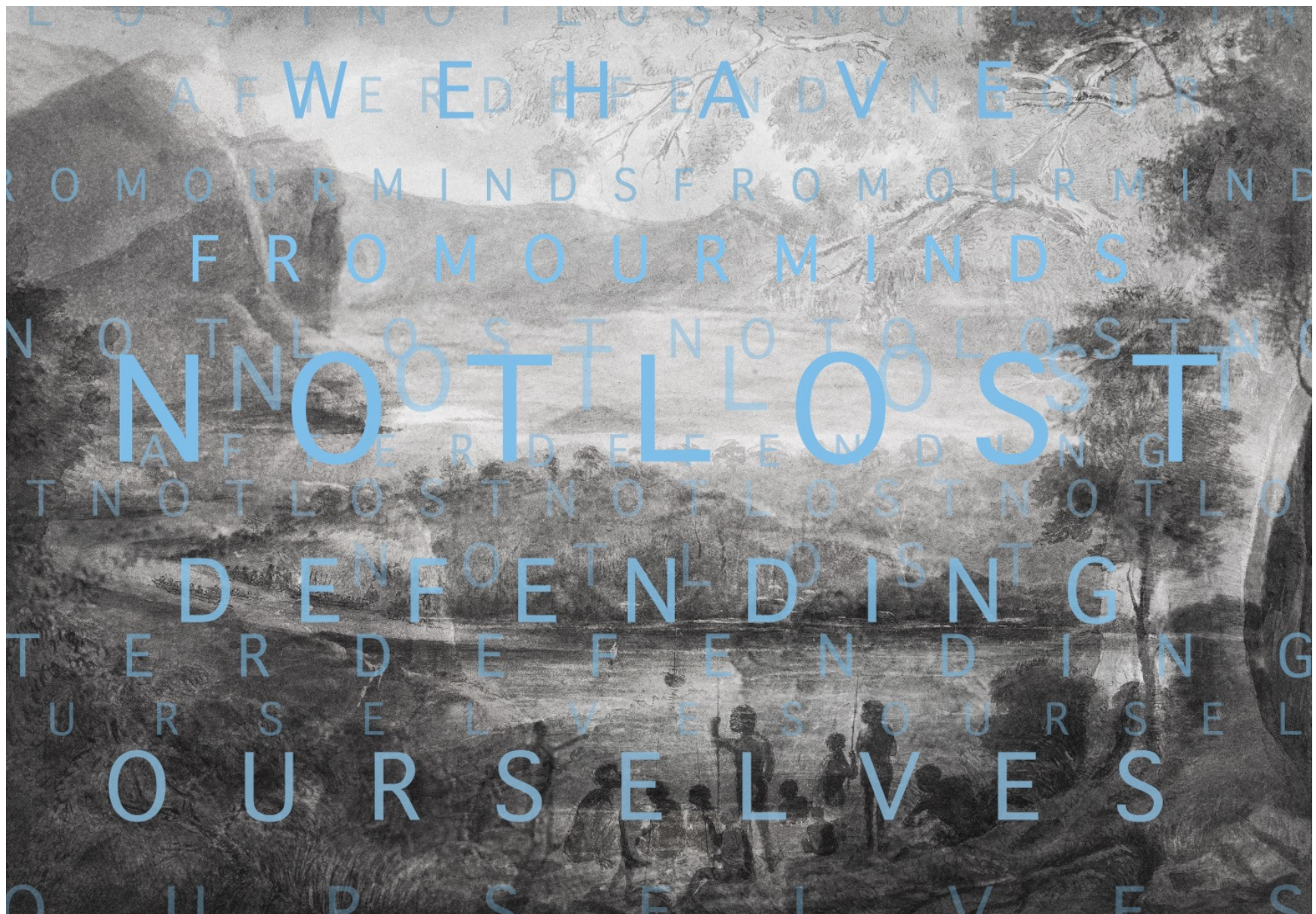
A UTILITY FUEL BEEYOO

OUR DREAM

A grayscale photograph of a rocky, mountainous landscape. Overlaid on the image is a large, stylized, light blue text that reads "THIS VANISHING WORLD IS BEYOND OUR DREAM". The text is arranged in several lines, with some letters being significantly larger than others, creating a fragmented and artistic effect. The background shows rugged, dark rock formations under a light sky.

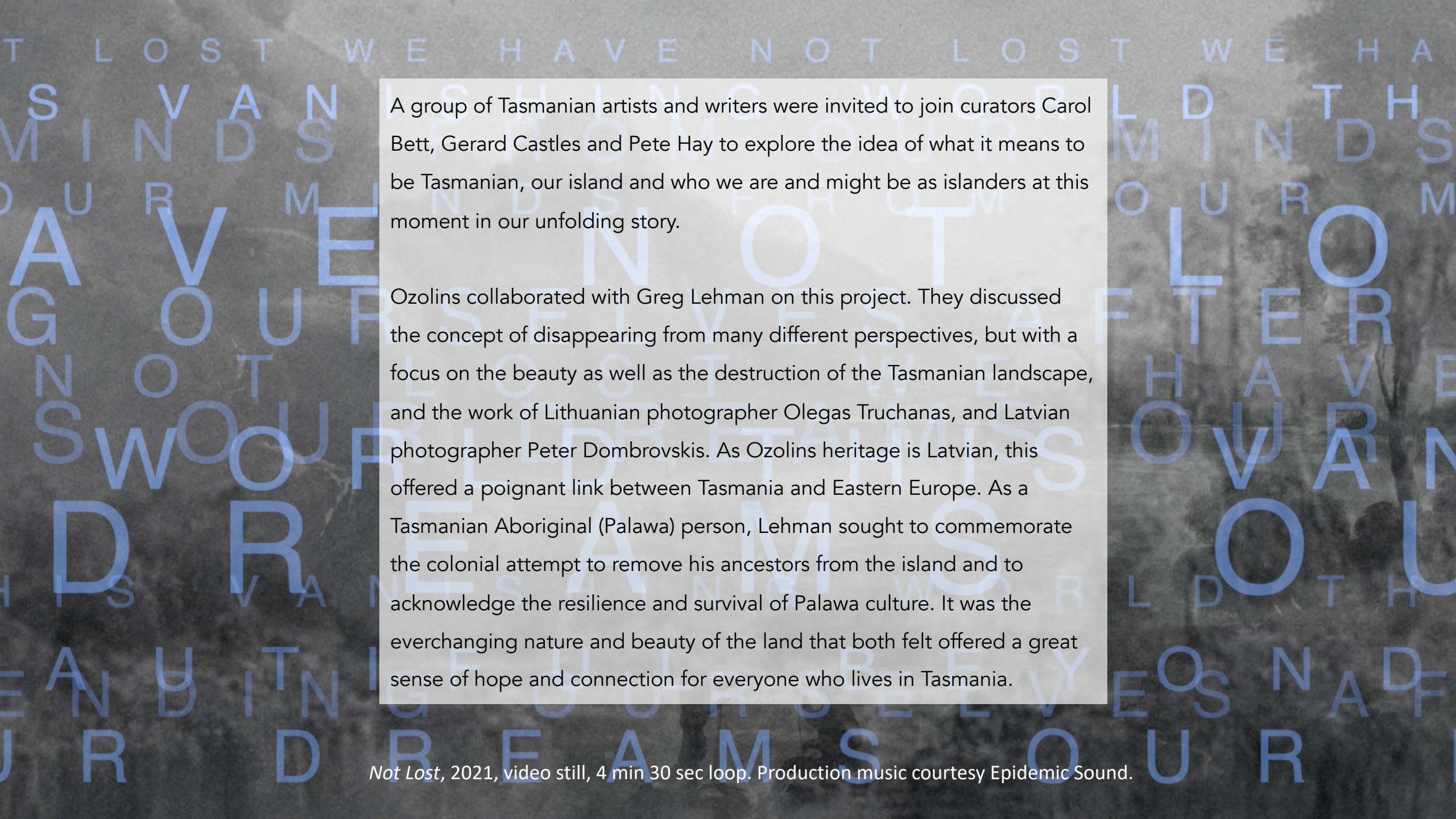
A grayscale photograph of a rocky, mountainous landscape. Overlaid on the image is a large, stylized, light blue text that reads "THIS VANISHING WORLD IS BEYOND OUR DREAM". The text is arranged in several lines, with some letters being significantly larger than others, creating a fragmented and artistic effect. The background shows rugged, dark rock formations under a light sky.





*Not Lost*, 2021, digital print on Canson Rag Photographic 310; 70 x 100 cm



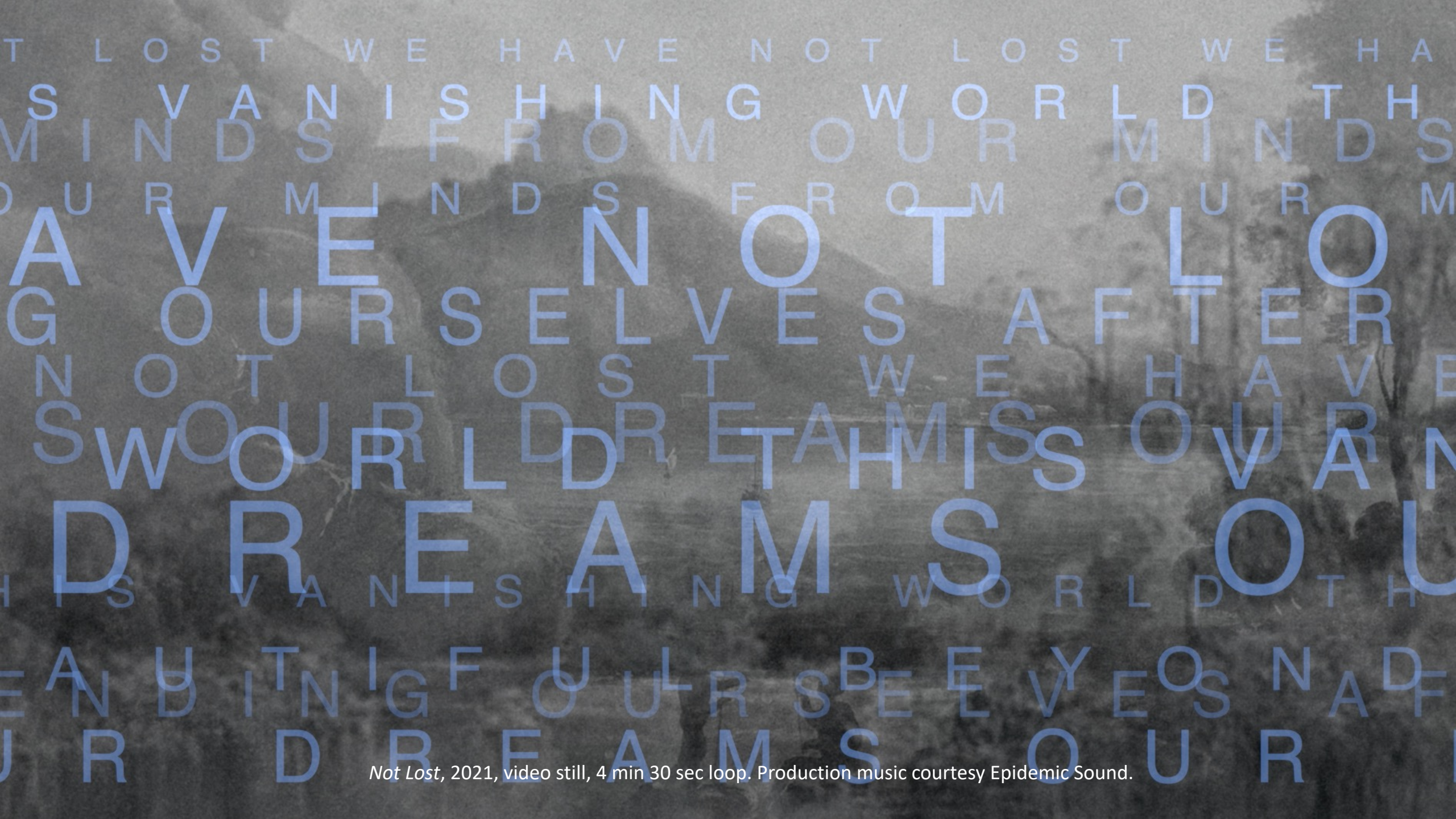


A group of Tasmanian artists and writers were invited to join curators Carol Bett, Gerard Castles and Pete Hay to explore the idea of what it means to be Tasmanian, our island and who we are and might be as islanders at this moment in our unfolding story.

Ozolins collaborated with Greg Lehman on this project. They discussed the concept of disappearing from many different perspectives, but with a focus on the beauty as well as the destruction of the Tasmanian landscape, and the work of Lithuanian photographer Olegas Truchanas, and Latvian photographer Peter Dombrovskis. As Ozolins heritage is Latvian, this offered a poignant link between Tasmania and Eastern Europe. As a Tasmanian Aboriginal (Palawa) person, Lehman sought to commemorate the colonial attempt to remove his ancestors from the island and to acknowledge the resilience and survival of Palawa culture. It was the everchanging nature and beauty of the land that both felt offered a great sense of hope and connection for everyone who lives in Tasmania.

*Not Lost*, 2021, video still, 4 min 30 sec loop. Production music courtesy Epidemic Sound.





*Not Lost*, 2021, video still, 4 min 30 sec loop. Production music courtesy Epidemic Sound.